



Rhode Island Airport Corporation

June 13, 2025

ADDENDUM NO. 1
Invitation for Bids No. 36109
REHABILITATION OF DELIVERY DRIVE PARKING LOT
Rhode Island T. F. Green International Airport

Prospective proposers and all concerned are hereby notified of the following changes in the document(s) related to **IFB 36109**. These changes shall be incorporated in and shall become an integral part of the contract documents.

1. Contract Documents

i. Section 00320 – Bid Form Schedule of Prices

- Replace page 00320-2 thru 00320-7 in its entirety and replace with page 00320-2(R-1) thru 00320-7(R-1) attached to this addendum. Items 8, 20, 23, 33, 39, 40, 44 and 45 quantities have been updated.

Certificate of Buy American Compliance for Manufactured Products

- Remove pages 00320-23 thru 00320-25 in their entirety. This certificate is not applicable to this project.

ii. Section 01027 APPLICATIONS FOR PAYMENT

- Replace page 01027-3 in its entirety and replace with page 01027-3(R-1) attached to this addendum. Item C.e. has been removed.

iii. Item MST-03 STATE OF RHODE ISLAND DEPARTMENT OF TRANSPORTATION STANDARD SPECIFICATIONS

- Replace pages MST-03-1 and MST-03-2 in its entirety and replace with pages MST-03-1(R-1) and MST-03-2(R-1) attached to this addendum. The item list has been updated.

2. Contract Plans

i. Sheet 02

- Replace sheet 02 in its entirety and replace with sheet 02(R-1) attached to this addendum. Quantities have been updated.

ii. Sheet 12

- Replace sheet 12 in its entirety and replace with sheet 12(R-1) attached to this addendum. Plans and Notes have been updated.

iii. Sheet 13

- Replace sheet 12 in its entirety and replace with sheet 13(R-1) attached to this addendum. Plans have been updated.

iv. Sheet 14

- Replace sheet 14 in its entirety and replace with sheet 14(R-1) attached to this addendum. Asphalt Overlay Section has been updated.

v. Sheet 19

- Replace sheet 19 in its entirety and replace with sheet 19(R-1) attached to this addendum. Plans have been updated.

vi. Sheet 20

- Replace sheet 20 in its entirety and replace with sheet 20(R-1) attached to this addendum. Plans have been updated.

3. Bidders RFIs

Questions & Answers:

1. Please clarify that Modified 19.0 is required for item 23. Usually, modified oil is not used in base mix.

Answer: *'Modified' has been retracted from items referring to Class 19.0 HMA pavement with the plan set and specifications.*

2. Please clarify what is included in item 21 – hot mix asphalt prep – partial depth since milling is not required.

Answer: *Please refer to RIDOT Blue Book (current version) for requirements of this item.*

3. Please clarify what is included in item 22 – hot mix asphalt prep – full depth since asphalt removal is not required.
Answer: *Please refer to RIDOT Blue Book (current version) for requirements of this item.*
4. Item 408.0301 – cleaning and sealing cracks – please clarify 30,000 lf is correct. Quantity seems excessive.
Answer: *The quantity of 30,000 LF is correct; this item shall be performed and paid for by the actual linear footage of cracks cleaned and sealed in the field and as directed by the Engineer.*
5. Who is responsible for quality control testing, soil compaction, concrete and asphalt etc.?
Answer: *The contractor shall be responsible for quality control testing.*
6. Please clarify which buildings and areas are required for Item 33 - 841.0100.
Answer: *Item 33 is not required for this project and has been removed from the contract.*
7. What type of field office is required? Are computers required?
Answer: *A field office is not required for the Owner's representative; this item has been removed from the contract.*
8. What size is the conduit for the communication? How is it paid for?
Answer: *Per detail 6 on sheet 26 and detail 2 on sheet 29, 2-2" conduits shall be provided from the associated Communications manhole to the CAS. 1 of these conduits is for the CAS and 1 is for spare. Per detail 1 on sheet 29, 2-4" conduits shall be provided from CMH-05 to PMAS-01. All other underground Communications conduits shall be assumed as 2-2" unless otherwise indicated on the Plans. The payment for conduit has been updated accordingly.*
9. Item 44 – 2" PVC conduit. Please clarify if there is 2 -2" conduits in the same trench, measurement for payment would be for each conduit.
Answer: *There is 2-2" conduits for electrical in the same trench. The payment for conduit has been updated accordingly.*
10. How is the 1" Conduit shown on drawing 24 paid for?
Answer: *The payment for 1" conduit has been updated accordingly.*

####END OF ADDENDUM####

**Rhode Island Airport Corporation
 Rehabilitation Of Delivery Drive Parking Lot
 Rhode Island T. F. Green International Airport
 Warwick, Rhode Island
 RIAC Construction Contract No. 36109**

| ITEM NO. | SPEC REF. | DESCRIPTION | QUANTITY | UNIT | ITEM OF WORK WITH UNIT PRICES WRITTEN IN WORDS | ITEM UNIT PRICE \$ | TOTAL AMOUNT FOR ITEM \$ |
|----------|-----------|---|------------------------|------|--|--------------------|--------------------------|
| 1 | C-100 | CONTRACTOR QUALITY CONTROL PROGRAM | 1 | LSUM | | | |
| 2 | C-105 | MOBILIZATION AND DEMOBILIZATION | 1 | LSUM | | | |
| 3 | MST-02 | MAINTENANCE OF TRAFFIC | 1 | LSUM | | | |
| 4 | P-620-5.1 | REMOVE PAVEMENT MARKINGS (AIRSIDE) | 650 | SFT | | | |
| 5 | P-620-5.2 | PAVEMENT MARKINGS (AIRSIDE) | 4,750 | SFT | | | |
| 6 | 202.0100 | EARTH EXCAVATION | 65 | CYD | | | |
| 7 | 201.0402 | REMOVE AND DISPOSE CONCRETE CURB | 65 | LFT | | | |
| 8 | 201.0407 | REMOVE AND DISPOSE ASPHALT PAVEMENT AND SUBBASE | 75 1,100 | SYD | | | |
| 9 | 201.0409 | REMOVE AND DISPOSE ASPHALT PAVEMENT | 1,150 | SYD | | | |
| 10 | 201.0421 | REMOVE AND DISPOSE BITUMINOUS CURB | 110 | LFT | | | |
| 11 | 201.0433 | REMOVE AND DISPOSE BOLLARD | 22 | EACH | | | |
| 12 | 201.9901 | DEMOLISH EXISTING AVIS BUILDING | 1 | LSUM | | | |
| 13 | 201.9902 | DEMOLISH EXISTING GUARD SHACK | 1 | LSUM | | | |
| 14 | 201.9903 | REMOVE AND DISPOSE CONCRETE JERSEY BARRIER | 50 | LFT | | | |

**Rhode Island Airport Corporation
 Rehabilitation Of Delivery Drive Parking Lot
 Rhode Island T. F. Green International Airport
 Warwick, Rhode Island
 RIAC Construction Contract No. 36109**

| ITEM NO. | SPEC REF. | DESCRIPTION | QUANTITY | UNIT | ITEM OF WORK WITH UNIT PRICES WRITTEN IN WORDS | ITEM UNIT PRICE \$ | TOTAL AMOUNT FOR ITEM \$ |
|----------|-----------|---|-----------|------|--|--------------------|--------------------------|
| 15 | 201.9904 | REMOVE AND DISPOSE METAL RAILING | 115 | LFT | | | |
| 16 | 206.0312 | COMPOST FILTER SOCK 12 INCH DIAMETER | 2,000 | LFT | | | |
| 17 | 209.0220 | SACK INSERT INLET PROTECTION | 7 | EACH | | | |
| 18 | 212.2200 | MAINTENANCE AND CLEANING OF EROSION, SEDIMENT, AND POLLUTION PREVENTION | 1 | LSUM | | | |
| 19 | 213.9901 | PLACE ASPHALT MILLINGS | 1,450 | SYD | | | |
| 20 | 302.0100 | GRAVEL BORROW SUBBASE COURSE | 40 200 | CYD | | | |
| 21 | 401.0510 | HOT MIX ASPHALT PREPARATION - PARTIAL DEPTH | 11,600 | SYD | | | |
| 22 | 401.0520 | HOT MIX ASPHALT PREPARATION - FULL DEPTH | 1,350 | SYD | | | |
| 23 | 401.1100 | MODIFIED CLASS 19.0 HMA CLASS 19.0 HMA | 3,400 | TON | | | |
| 24 | 401.3003 | CLASS 9.5 HMA FOR PATCHING | 25 | TON | | | |
| 25 | 401.3100 | MODIFIED CLASS 9.5 HMA | 1,200 | TON | | | |
| 26 | 408.0301 | CLEANING AND SEALING CRACKS IN ASPHALT PAVEMENT | 30,000 | LFT | | | |
| 27 | 601.0200 | CLASS XX PORTLAND CEMENT CONCRETE (CARD READER ISLAND) | 5 | CYD | | | |
| 28 | 707.0900 | ADJUST MANHOLES TO GRADE | 7 | EACH | | | |

| Rhode Island Airport Corporation Rehabilitation Of Delivery Drive Parking Lot Rhode Island T. F. Green International Airport Warwick, Rhode Island RIAC Construction Contract No. 36109 | | | | | | | |
|--|---------------------|---|-------------------------|-----------------|--|--------------------|--------------------------|
| ITEM NO. | SPEC REF. | DESCRIPTION | QUANTITY | UNIT | ITEM OF WORK WITH UNIT PRICES WRITTEN IN WORDS | ITEM UNIT PRICE \$ | TOTAL AMOUNT FOR ITEM \$ |
| 29 | 707.1100 | ADJUST CATCH BASINS TO GRADE | 6 | EACH | | | |
| 30 | 713.8268 | ADJUST CURB STOP OR UTILITY BOX TO GRADE | 7 | EACH | | | |
| 31 | 810.0702 | WELDED WIRE FABRIC (CARD READER ISLAND) | 65 | SFT | | | |
| 32 | 821.0100 | SAWING & SEALING JOINTS IN BITUMINOUS CONCRETE PAVEMENT | 55 | LFT | | | |
| 33 | 841.0100 | PRE AND POST CONSTRUCTION CONDITION SURVEYS | 4 | EACH | ITEM HAS BEEN OMITTED AND REMOVED FROM THE PROJECT | | |
| 34 | 903.0510 | 6' CHAINLINK FENCE | 740 | LFT | | | |
| 35 | 903.0520 | TEMPORARY CONSTRUCTION FENCE | 850 | LFT | | | |
| 36 | 903.0530 | 4' WIDE MAN GATE | 1 | EACH | | | |
| 37 | 906.0320 | PRECAST CONCRETE CURB (CARD READER ISLAND) | 45 | LFT | | | |
| 38 | 906.9901 | PRECAST CONCRETE CAR STOP | 85 | EACH | | | |
| 39 | 929.0110 | FIELD OFFICE | 7 | PMO | ITEM HAS BEEN OMITTED AND REMOVED FROM THE PROJECT | | |
| 40 | 932.0200 | FULL-DEPTH SAWCUT OF BITUMINOUS PAVEMENT | 2800 3700 | LFT | | | |
| 41 | 937.0100 | FURNISH, INSTALL, MAINTAIN, AND MOVE TEMPORARY TRAFFIC PROTECTION | 1 | LSUM | | | |
| 42 | T05.0101 | HANDHOLE (COMMUNICATION) | 9 | EACH | | | |

| Rhode Island Airport Corporation Rehabilitation Of Delivery Drive Parking Lot Rhode Island T. F. Green International Airport Warwick, Rhode Island RIAC Construction Contract No. 36109 | | | | | | | |
|---|---------------------|---|-------------------------|------|--|--------------------|--------------------------|
| ITEM NO. | SPEC REF. | DESCRIPTION | QUANTITY | UNIT | ITEM OF WORK WITH UNIT PRICES WRITTEN IN WORDS | ITEM UNIT PRICE \$ | TOTAL AMOUNT FOR ITEM \$ |
| 43 | T05.1030 | ADJUST HANDHOLE TO GRADE | 7 | EACH | | | |
| 44 | T06.3101 | 2" PVC CONDUIT - INSTALLED UNDER EXISTING PAVEMENT W/ RESTORATION CONDUIT - UNDER EXISTING PAVEMENT | 3000 8250 | LFT | | | |
| 45 | T06.3102 | 1 1/2" PVC CONDUIT - INSTALLED UNDER EXISTING PAVEMENT W/ RESTORATION | 250 | LFT | ITEM HAS BEEN OMITTED AND REMOVED FROM THE PROJECT | | |
| 46 | T15.0200 | REMOVE AND RELOCATE DIRECTIONAL, REGULATORY, AND WARNING SIGN | 2 | EACH | | | |
| 47 | T15.2000 | ADA PARKING SIGNS | 8 | EACH | | | |
| 48 | T20.0103 | EPOXY RESIN ADA PARKING SYMBOLS | 8 | EACH | | | |
| 49 | T20.2404 | 4 INCH WHITE EPOXY RESIN PAVEMENT MARKINGS | 9,900 | LFT | | | |
| 50 | T20.2412 | 12 INCH WHITE EPOXY RESIN PAVEMENT MARKINGS (STOP BAR) | 125 | LFT | | | |
| 51 | T20.2804 | 4 INCH YELLOW EPOXY RESIN PAVEMENT MARKINGS | 500 | LFT | | | |
| 52 | T20.3401 | EPOXY RESIN PAVEMENT MARKING SYMBOL - ARROW (STRAIGHT) | 48 | EACH | | | |
| 53 | T20.3410 | EPOXY RESIN PAVEMENT MARKING WORD ("STOP") | 8 | EACH | | | |
| 54 | T20.4506 | REMOVE PAVEMENT MARKING LINE - LESS THAN OR EQUAL TO 6 INCHES WIDE | 300 | LFT | | | |
| 55 | 260001 | 6 AWG SINGLE CONDUCTOR CABLE 600V INSULATION | 5,800 | LFT | | | |

| <p style="text-align: center;">Rhode Island Airport Corporation Rehabilitation Of Delivery Drive Parking Lot Rhode Island T. F. Green International Airport Warwick, Rhode Island RIAC Construction Contract No. 36109</p> | | | | | | | |
|---|-----------|---|----------|------|--|--------------------|--------------------------|
| ITEM NO. | SPEC REF. | DESCRIPTION | QUANTITY | UNIT | ITEM OF WORK WITH UNIT PRICES WRITTEN IN WORDS | ITEM UNIT PRICE \$ | TOTAL AMOUNT FOR ITEM \$ |
| 56 | 260001 | 8 AWG SINGLE CONDUCTOR CABLE 600V INSULATION | 4,200 | LFT | | | |
| 57 | 260001 | 2 AWG SINGLE CONDUCTOR CABLE 600V INSULATION | 6,400 | LFT | | | |
| 58 | 260001 | HANDHOLE (ELECTRICAL) | 3 | EACH | | | |
| 59 | 260001 | LIGHT STANDARD FOUNDATION WITH ANCHOR BOLTS STANDARD 18.1.0 | 13 | EACH | | | |
| 60 | 260001 | ALUMINUM LIGHTING STD. 20 FT. W/ SINGLE DAVIT ARM EXTN. 10 FT. AND LED FIXTURES | 13 | EACH | | | |
| 61 | 260001 | PROVIDE LIGHTING CONTACTOR | 1 | EACH | | | |
| 62 | 260001 | PROVIDE ELECTRICAL PANEL 120/208V, 60A, 3PH, 4W | 1 | EACH | | | |
| 63 | 260001 | REMOVE 6 AWG SINGLE CONDUCTOR CABLE 600V INSULATION | 3,900 | LFT | | | |
| 64 | 272000 | AGGREGATE ETHERNET SWITCH (ES) WITH SFP MODULES | 1 | EACH | | | |
| 65 | 271524 | 6-PORT OPTICAL FIBER TERMINATION RACK (OFTR) | 8 | EACH | | | |
| 66 | 271524 | 12-PORT OPTICAL FIBER TERMINATION RACK (OFTR) | 5 | EACH | | | |
| 67 | 271524 | 6-STRAND MULTI-MODE OPTICAL FIBER CABLE (MFO) | 2,700 | LFT | | | |
| 68 | 271524 | MULTI-MODE OPTICAL FIBER JUMPER CABLE | 50 | EACH | | | |
| 69 | 282304 | PAD-MOUNTED ACCESSORY STATION (PMAS) | 1 | EACH | | | |

**Rhode Island Airport Corporation
 Rehabilitation Of Delivery Drive Parking Lot
 Rhode Island T. F. Green International Airport
 Warwick, Rhode Island
 RIAC Construction Contract No. 36109**

| ITEM NO. | SPEC REF. | DESCRIPTION | QUANTITY | UNIT | ITEM OF WORK WITH UNIT PRICES WRITTEN IN WORDS | ITEM UNIT PRICE \$ | TOTAL AMOUNT FOR ITEM \$ |
|----------|-----------|--|----------|------|--|--------------------|--------------------------|
| 70 | 282304 | CAMERA SURGE PROTECTOR (CSP) | 8 | EACH | | | |
| 71 | 282304 | CAMERA POWER INJECTOR (CPI) | 8 | EACH | | | |
| 72 | 282304 | MULTI-SENSOR CAMERA WITH PTZ, POLE MOUNTED | 8 | EACH | | | |
| 73 | 282304 | COPPER PATCH PANEL (CPP) | 9 | EACH | | | |
| 74 | 282304 | MEDIA CONVERTERS (LAN-MC MINI) | 8 | EACH | | | |
| 75 | 282304 | CAMERA ACCESSORY STATION (CAS) | 8 | EACH | | | |
| 76 | 282304 | CAT6 CABLE | 1,000 | LFT | | | |
| 77 | 323913 | 6" STEEL PIPE BOLLARD WITH CONCRETE | 16 | EACH | | | |

TOTAL BASE BID AMOUNT (FIGURES)

TOTAL BASE BID AMOUNT (IN WORDS)

END OF BASE BID PRICES

B. Waivers and Mechanics Liens

1. Monthly Applications for Payment shall include Waivers of Mechanic's Liens and Claims for all Work included in the period of construction covered by the Application for Payment and the previous month's Application. Waivers of Liens and Claims from Subcontractors or suppliers shall include the period of construction covered by the Application for Payment, the total amount paid prior to and including the previous month's Application.
2. Partial Waivers of Liens shall be submitted on each item of work for the amount requested, prior to deduction for retainage, for each item.
3. Contractor shall submit final or full Waivers of Liens and Claims for completed items of work shown on the monthly Application for Payment.
4. The Owner reserves the right to designate which entities involved in the Work must submit Waivers of Liens.
5. The Final Application for Payment shall be submitted with, or preceded by final Waivers from every entity involved with the performance of work, supplying of materials or the providing of professional services covered by the Application who could lawfully be entitled to a Lien. Development of the Final Application for Payment shall follow the process outlined in General Provision Section 90-09 Acceptance and Final Payment.
6. Waivers of Liens shall be provided on forms, and executed in a manner acceptable to the Owner.

C. Initial (First) and Monthly Application for Payment.

1. Administrative actions and submittals that must precede or coincide with submittal of first Application for Payment include, but are not limited to the following:
 - a. Schedule of Values (only for initial).
 - b. Contractor's construction schedule, updated monthly See Section 01310-Construction Progress Schedule for updating requirements.
 - c. Suppliers and Subcontractors waivers, as verification of payment noted on prior month's payments.
 - d. Forms noted in the Minority/EEO Plan including but not limited to: 1) Minority Participation Affidavit, 2) Certified Payroll, 3) monthly Minority Utilization Reports.
 - e. Omitted

**ITEM MST-03 STATE OF RHODE ISLAND
DEPARTMENT OF TRANSPORTATION STANDARD SPECIFICATIONS**

DESCRIPTION

03-1.1 It is the intent that the construction and materials specifications for items so designated in the plans conform to the State of Rhode Island Department of Transportation Standard Specifications. Therefore, unless stated otherwise, the most recent State of Rhode Island Department of Transportation Standard Specifications shall apply to RIDOT Sections:

- RIDOT 201 Site Preparation
- RIDOT 202 Earth Excavation
- RIDOT 206 Perimeter Erosion Controls
- RIDOT 209 Storm Drain Inlet Protection
- RIDOT 212 Maintenance and Cleaning of Erosion, Sediment, and Pollution
- RIDOT 302 Gravel Borrow Subbase Course
- RIDOT 401 Dense Graded Hot Mix Asphalt (HMA) Pavement
- RIDOT 403 Asphalt Emulsion Tack Coat
- RIDOT 408 Cleaning and Sealing Cracks in Asphalt Pavement
- RIDOT 601 Portland Cement Concrete
- RIDOT 707 Adjust Drainage or Utility Structures
- RIDOT 713 Adjust Curb Stop or Utility Box to Grade
- RIDOT 810 Reinforcing Steel
- RIDOT 820 Concrete Surface Treatment Protective Sealer
- RIDOT 821 Sawing and Sealing Joints in Asphalt
- RIDOT 903 Fences
- RIDOT 905 Sidewalks, Curb Ramps, and Driveways
- RIDOT 907 Dust Control
- RIDOT 922 Temporary Construction Signs
- RIDOT 932 Cutting and Matching Pavement
- RIDOT 937 Furnish, Install, Maintain, and Move Temporary Traffic Protection
- RIDOT 940 As-Built Plans and As-Built Survey Plans
- RIDOT M02 Portland Cement Concrete
- RIDOT M03 Asphalt Pavements
- RIDOT M04 Drainage and Stormwater
- RIDOT M08 Fence and Guardrail
- RIDOT M16 Signs and Sign Supports
- RIDOT M17 Pavement Markings
- RIDOT T04 Wire and Cable
- RIDOT T05 Handholes and Pull boxes
- RIDOT T06 Conduit
- RIDOT T15 Directional, Regulatory and Warning Signs
- RIDOT T16 Ground Mounted Extruded Aluminum Sign Panels, Posts, and Breakaway Supports
- RIDOT T20 Pavement Markings

If there is a conflict between the Rhode Island Department of Transportation Standard Specifications and the contents of the Technical Provisions of these specifications, these specifications shall govern.

RIDOT Section 938 - Price Adjustments, **is not** applicable to this project.

DEFINITION OF TERMS

03-2.1 Deviations from the requirements of RIDOT Specifications are as follows:

1. Department shall mean Rhode Island Airport Corporation (RIAC)
2. Engineer shall mean the designated representative of RIAC
3. Laboratory shall mean the Contractor's designated testing firm
4. Division of Purchases shall mean RIAC
5. State shall mean RIAC

MATERIALS

03-3.1 The Contractor shall perform the mix design and establish the job-mix formula which shall be submitted to the Engineer for approval at least 14 days prior to start of paving.

END OF ITEM MST-03

(R-1)



Rhode Island T. F. Green International Airport
2000 Post Road - Warwick - RI - 02886
p: 401.691.2417 f: 401.691.2560
www.flyri.com



SUB:

Designed By: WTE
Issue Date: 05/23/2025
1
Drawn By: MCZ
Project No: 099020.003
Checked By: JB
Scale: AS SHOWN
06/09/2025

1 JB ADDENDUM 01 06/09/2025
REV BY DESCRIPTION DATE

PROJECT: RHODE ISLAND T. F. GREEN INTERNATIONAL AIRPORT (PVD)
WARWICK, RHODE ISLAND
REHABILITATION OF DELIVERY DRIVE PARKING LOT
TITLE: SHEET INDEX AND ESTIMATE OF QUANTITIES

CERTIFICATION:
JOSEPH M. BAMBARA
No. 8964
REGISTERED PROFESSIONAL ENGINEER
CIVIL 06/13/25

DRAWING NO. 02

ESTIMATE OF QUANTITIES - ADDENDUM NO. 1

Table with columns: Item No., Spec. No., Description, Quantity, Unit. Includes items 1 through 77, with some items circled and some crossed out.

△

△

△

△

△

△

△

△

△

△

△

△

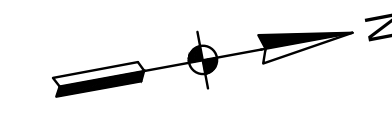
SHEET INDEX table with columns: Sheet Number, Sheet Title. Lists sheets 01 through 31.

ITEM HAS BEEN OMITTED AND REMOVED FROM THE PROJECT

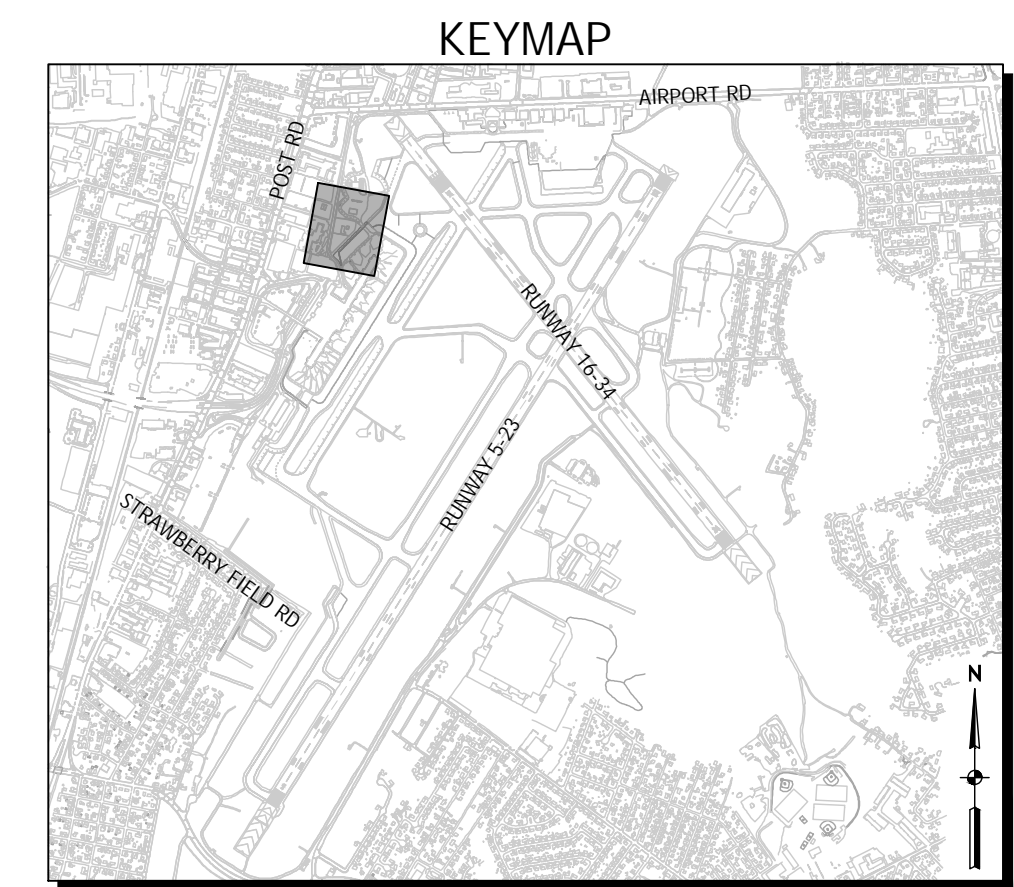
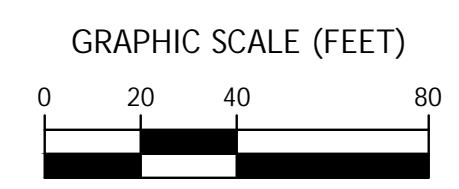
ITEM HAS BEEN OMITTED AND REMOVED FROM THE PROJECT

ITEM HAS BEEN OMITTED AND REMOVED FROM THE PROJECT

File: V:\PROJECTS\ANY\K7\099020.003\09_DESIGN\DRAWINGS\01_SHEETS\PVD-099020-TABL-INDX.DWG
Saved: 6/12/2025 8:22:24 PM Plotted: 6/12/2025 8:24:30 PM Current User: Zender, Melissa LastSavedBy: 7767



(R-1)

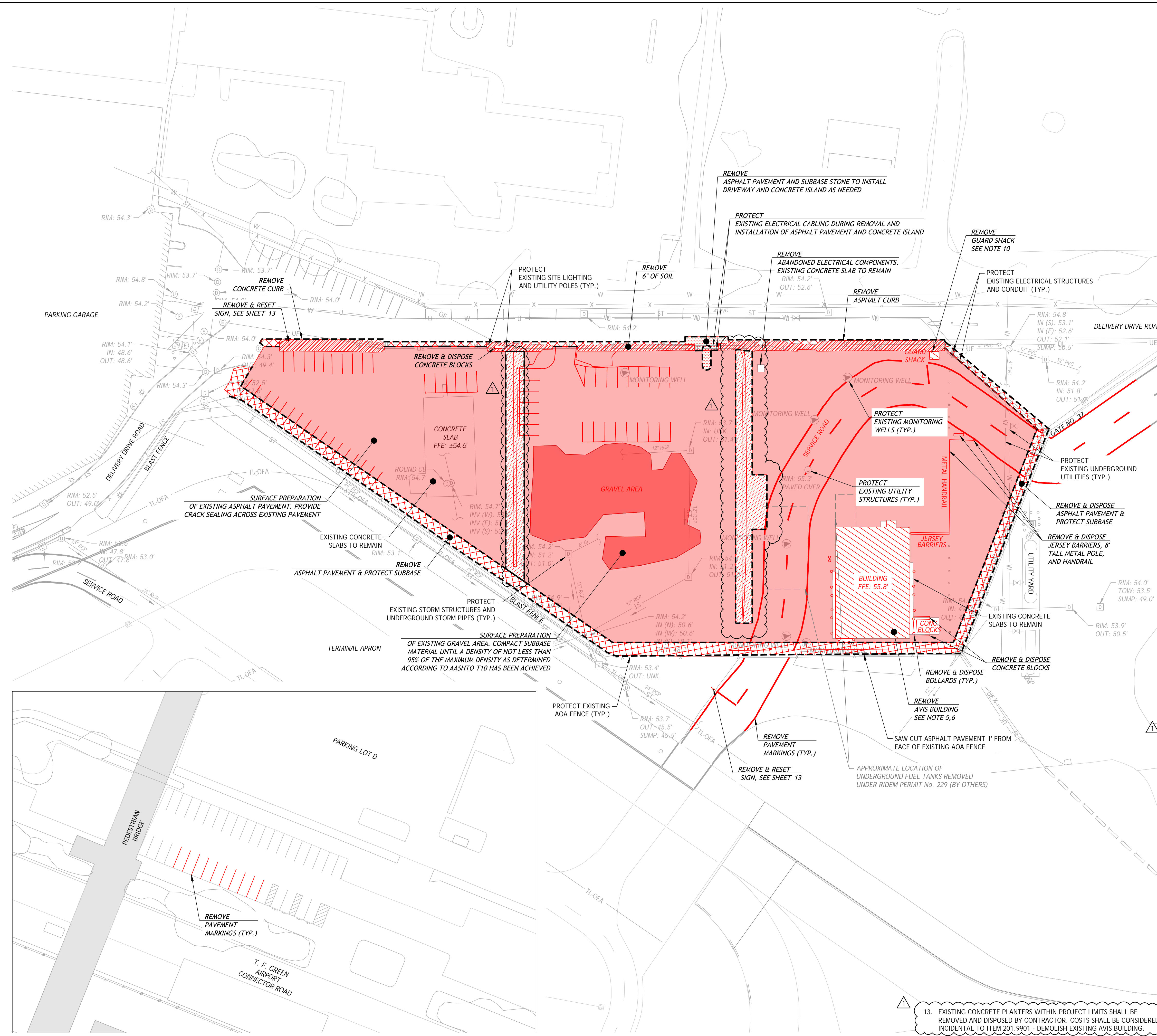


LEGEND

| | |
|--|--|
| | SURFACE PREPARATION - ASPHALT |
| | SURFACE PREPARATION - COMPACT SUBBASE MATERIAL |
| | REMOVE ASPHALT PAVEMENT - PROTECT SUBBASE |
| | REMOVE ASPHALT PAVEMENT AND SUBBASE |
| | REMOVE BUILDING STRUCTURE |
| | REMOVE 6" OF SOIL |
| | SAWCUT ASPHALT PAVEMENT |

DEMOLITION NOTES

1. THE CONTRACTOR SHALL PROTECT ALL EXISTING UTILITIES THAT SHALL REMAIN. ANY DAMAGE TO UTILITIES SHALL BE REPLACED AT THE CONTRACTOR'S EXPENSE.
2. THE CONTRACTOR SHALL COORDINATE WITH RIAC TO DE-ENERGIZE AND LOCK-OUT POWER TO EXISTING SITE COMPONENTS PRIOR TO DEMOLITION.
3. ALL DEMOLISHED ITEMS AND SPOIL MATERIALS RESULTING FROM CLEARING AND GRUBBING, PAVEMENT REMOVAL, UTILITY REMOVAL, ETC. SHALL BE HAULED AND PROPERLY DISPOSED OF OFF AIRPORT PROPERTY UNLESS OTHERWISE NOTED OR COORDINATED WITH RIAC.
4. ANY DEMOLITION ITEM NOT LISTED AS A REMOVAL IN THE ESTIMATE OF QUANTITIES SHALL BE CONSIDERED INCIDENTAL TO THE VARIOUS DEMOLITION PAY ITEMS PER GENERAL PROVISION 40-06.
5. THE CONTRACTOR SHALL REMOVE ALL ABOVE GROUND COMPONENTS OF EXISTING AVIS BUILDING. THE BUILDING SHALL BE REMOVED FLUSH TO SURROUNDING EXISTING GRADE. EXISTING UTILITY SERVICES SHALL BE DISCONNECTED, CAPPED AND SEALED. CONTRACTOR SHALL NOTIFY AFFECTED UTILITY COMPANIES AND SHALL VERIFY ALL EXISTING UTILITIES HAVE BEEN SHUT OFF PRIOR TO STARTING WORK.
6. EXISTING UTILITY PENETRATIONS WITHIN THE AVIS BUILDING ARE TO BE CAPPED AND FILLED WITH CONCRETE TO MEET FLUSH WITH SURROUNDING GRADE ELEVATIONS. COST SHALL BE CONSIDERED INCIDENTAL TO BUILDING REMOVAL.
7. EXISTING RAISED CONCRETE PEDESTALS, CONCRETE PADS, SLABS ON GRADE, CONCRETE BLOCKS, AND CURBING ARE PRESENT WITHIN THE AVIS BUILDING, GUARD SHACK, AND ELSEWHERE. PRIOR TO SURFACE PREPARATIONS AND ASPHALT OVERLAY OPERATIONS, ALL RAISED OBSTRUCTIONS AND PROTRUSIONS FOUND ON SITE SHOULD BE REMOVED AND LEVELED TO MEET FLUSH WITH SURROUNDING GRADE ELEVATIONS. THE REMAINING BUILDING FOOTPRINT SHALL HAVE A UNIFORM GRADE ACROSS ITS ENTIRETY PRIOR TO ASPHALT OPERATIONS. COSTS SHALL BE CONSIDERED INCIDENTAL TO BUILDING REMOVAL.
8. EXISTING BOLLARDS SHALL BE CUT AND GRINDED DOWN TO MEET FLUSH WITH SURROUNDING GRADE ELEVATIONS. COSTS FOR THIS WORK SHALL BE INCLUDED UNDER ITEM 201.0433 - REMOVE & DISPOSE BOLLARDS.
9. THE EXISTING AVIS BUILDING WAS TESTED FOR LEAD AND ASBESTOS CONTAINING MATERIALS. THE SITE IS A REGULATED FACILITY UNDER EPA, NESHAP, RIDOH, AND OSHA ASBESTOS REGULATIONS. THE QUANTITY OF ACM TO BE REMOVED BY THE SCOPE OF THE DEMOLITION PROJECT DOES NOT EXCEED THE RIDOH TRIGGER QUANTITY OF 10 LF/25 SF.
10. EXISTING GUARD SHACK ELECTRICAL PANEL AND FIBER/ACP PANEL TO BE PROTECTED DURING CONSTRUCTION UNTIL NEW ELECTRICAL PANEL, FIBER PANEL, PEDESTALS, AND ASSOCIATED CUT OVER CABLING HAS BEEN ESTABLISHED. FOLLOWING CONFIRMATION OF POWER ESTABLISHED IN NEW PANELS, EXISTING ELECTRICAL/FIBER/ACP PANELS AND ASSOCIATED CABLING MAY BE REMOVED. SEE SHEET 24 - ELECTRICAL SITE PLAN AND SHEET 28 - SECURITY SITE PLAN FOR DETAILS AND MORE INFORMATION.
11. THE CONTRACTOR SHALL REMOVE ALL EXISTING VEGETATION WITHIN DESIGNATED PAVING AREAS PRIOR TO SURFACE PREPARATION. THE REMOVAL SHALL EXTEND TO A DEPTH SUFFICIENT TO ENSURE THAT NO ROOTS OR ORGANIC MATTER REMAIN. THE AREA MUST BE THOROUGHLY CLEARED AND PREPARED TO PROVIDE A STABLE BASE FOR ASPHALT PAVING. COST OF VEGETATION REMOVAL SHALL BE INCIDENTAL TO ASPHALT PAVING.
12. CONTRACTOR SHALL SEAL EXISTING ASPHALT CRACKING PRIOR TO ASPHALT OVERLAY OPERATION. COST SHALL BE INCLUDED IN LINE ITEM #408 - CLEANING AND SEALING CRACKS IN ASPHALT CONCRETE PAVEMENT.



SUB:

| | | |
|--|--|--|
| | | |
|--|--|--|

| | | |
|--------------|-------------|-------------|
| Designed By: | Drawn By: | Checked By: |
| WTE | MCZ | JB |
| Issue Date: | Project No: | Scale: |
| 05/23/2025 | 099020.003 | AS SHOWN |

| | | | |
|--------|----|-------------|------------|
| 1 | JB | ADDENDUM 01 | 06/09/2025 |
| REV BY | | DESCRIPTION | DATE |

PROJECT: **RHODE ISLAND T. F. GREEN INTERNATIONAL AIRPORT (PVD) WARWICK, RHODE ISLAND REHABILITATION OF DELIVERY DRIVE PARKING LOT**

TITLE: **DEMOLITION PLAN**

CERTIFICATION:

 REGISTERED PROFESSIONAL ENGINEER
 CIVIL 06/13/25

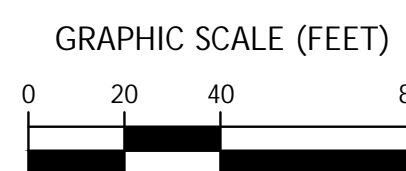
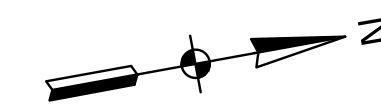
File: V:\PROJECTS\ANY\K7\099020.003\09_DESIGN\DRAWINGS\01_SHEETS\PVD_099020-PLAN-DEMO.DWG
 Saved: 6/9/2025 4:48:09 PM Plotted: 6/9/2025 8:16:31 AM Current User: Zander, Melissa UserSweBy: 7767

(R-1)

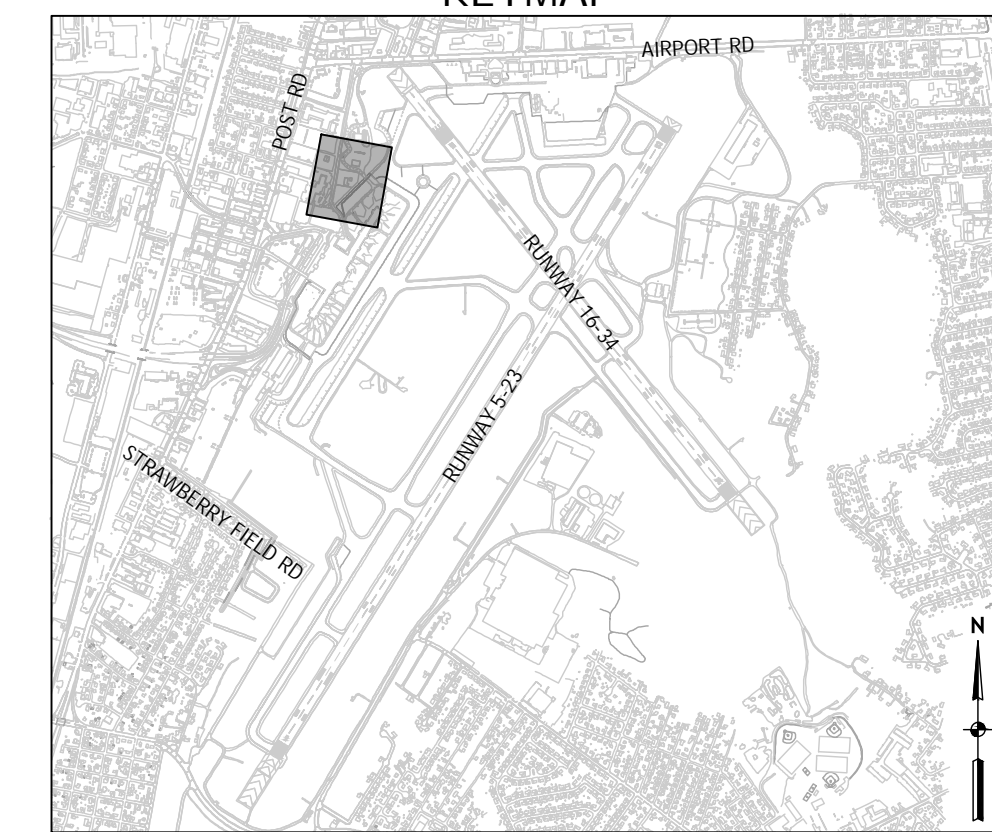


Rhode Island T. F. Green International Airport
2000 Post Road - Warwick - RI - 02886
p: 401.691.2417 f: 401.691.2560
w: www.flyri.com

PRIMARY:
Drawing Copyright © 2025
CMA
272 West Exchange Street
Providence, RI 02903
www.chasolutions.com



KEYMAP



SUB:

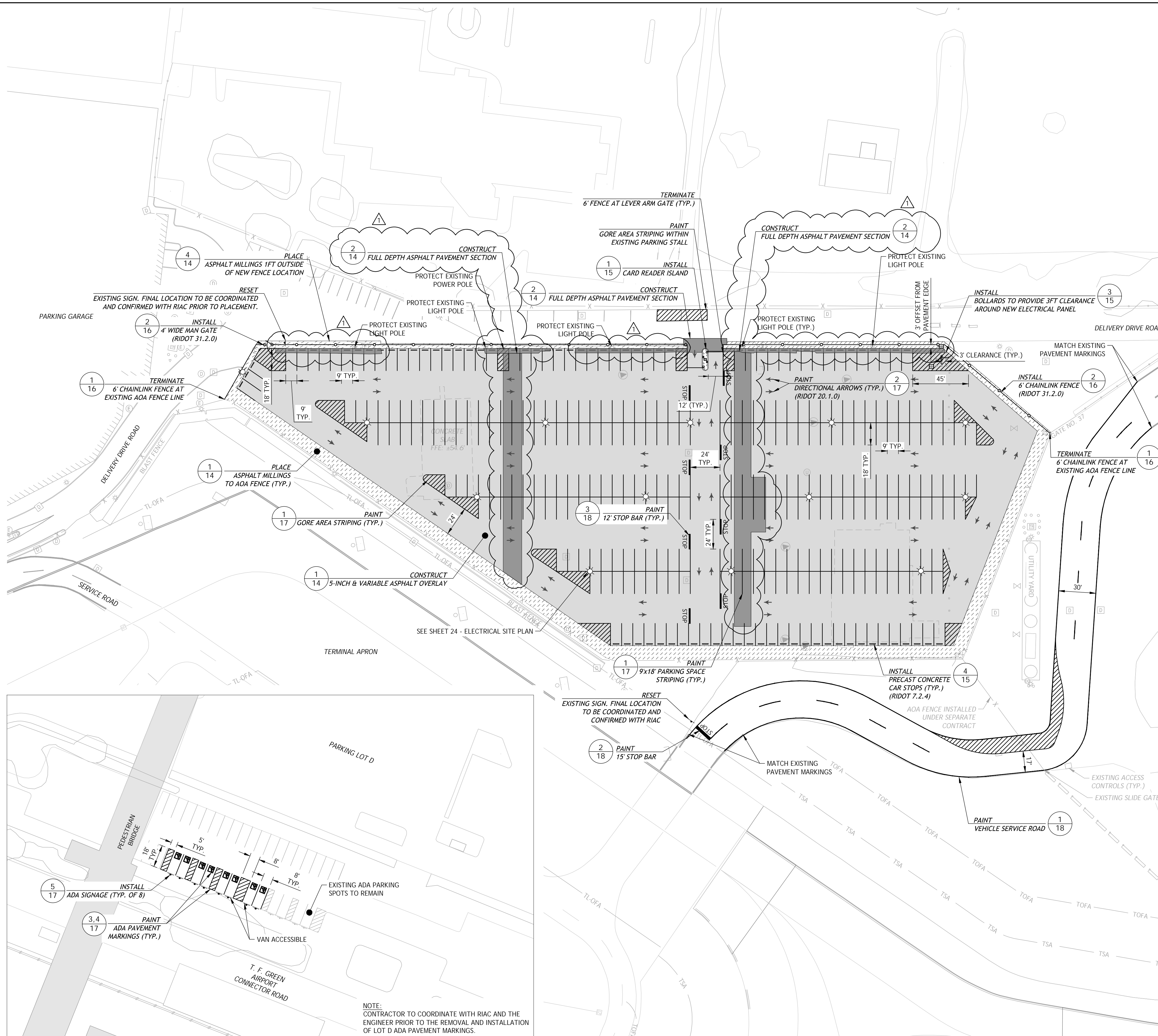
Designed By: WTE
Issue Date: 05/23/2025
Drawn By: MCZ
Project No: 099020.003
Checked By: JB
Scale: AS SHOWN

1 JB ADDENDUM 01 06/09/2025
REV BY DESCRIPTION DATE

| LEGEND | |
|--------|-------------------------------------|
| | 5-INCH & VARIABLE ASPHALT OVERLAY |
| | FULL DEPTH ASPHALT PAVEMENT SECTION |
| | ASPHALT MILLINGS |

SITE NOTES

- TOTAL DELIVERY DRIVE PARKING SPACES: 334
- TOTAL ADA ACCESSIBLE PARKING SPACES (LOCATED IN PARKING LOT D): 8
- INSTALLATION OF SUBBASE STONE WILL BE REQUIRED IN AREAS OF EARTH EXCAVATION AS DESCRIBED WITHIN THE DEMOLITION PLAN. REFER TO SHEET 14 - SITE PAVING DETAILS - DETAIL NO. 2 & 3.



File: V:\PROJECTS\ANY\K7\099020.003\09_DESIGN\DRAWINGS\01_SHEETS\PVD_099020-PLAN-SITE.DWG
Saved: 6/9/2025 4:44:52 PM Plotted: 6/9/2025 8:41:47 AM Current User: Zander, Melissa LastSavedBy: 7767

NOTE:
CONTRACTOR TO COORDINATE WITH RIAC AND THE ENGINEER PRIOR TO THE REMOVAL AND INSTALLATION OF LOT D ADA PAVEMENT MARKINGS.

PROJECT: RHODE ISLAND T. F. GREEN INTERNATIONAL AIRPORT (PVD)
WARWICK, RHODE ISLAND
REHABILITATION OF DELIVERY DRIVE PARKING LOT

TITLE: SITE & MARKING PLAN

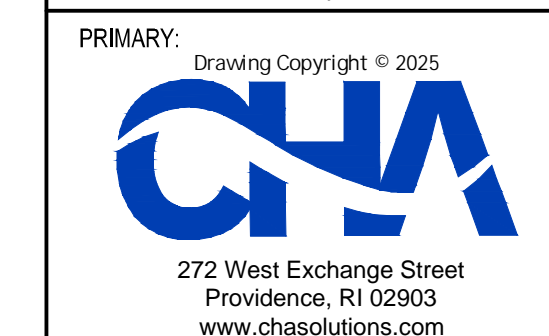
CERTIFICATION:
JOSEPH M. BAMBARA
No. 8964
REGISTERED PROFESSIONAL ENGINEER
CIVIL 06/13/25

DRAWING NO. 13

(R-1)



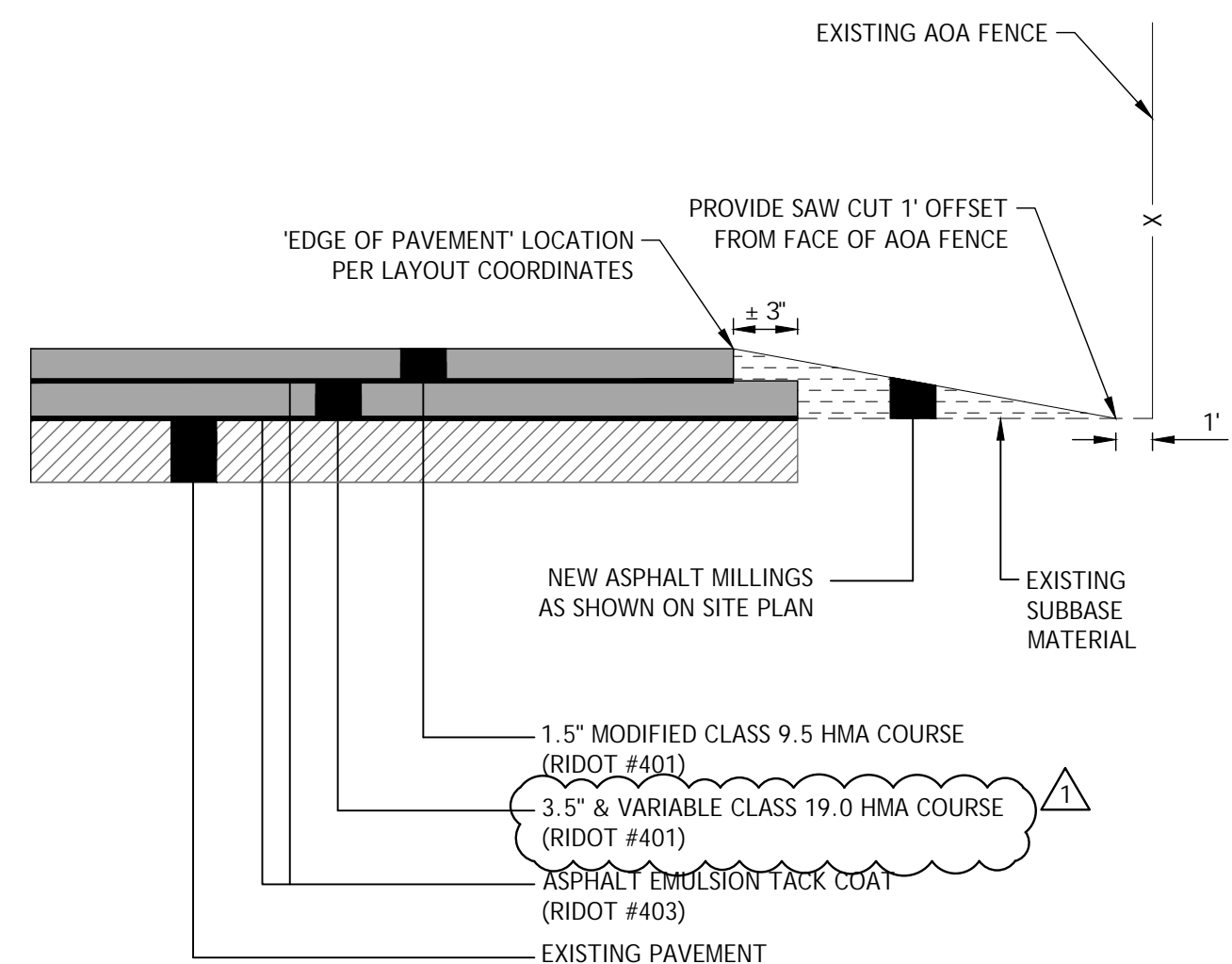
Rhode Island T. F. Green International Airport
2000 Post Road - Warwick - RI - 02886
p: 401.691.2417 f: 401.691.2560
w: www.flyri.com



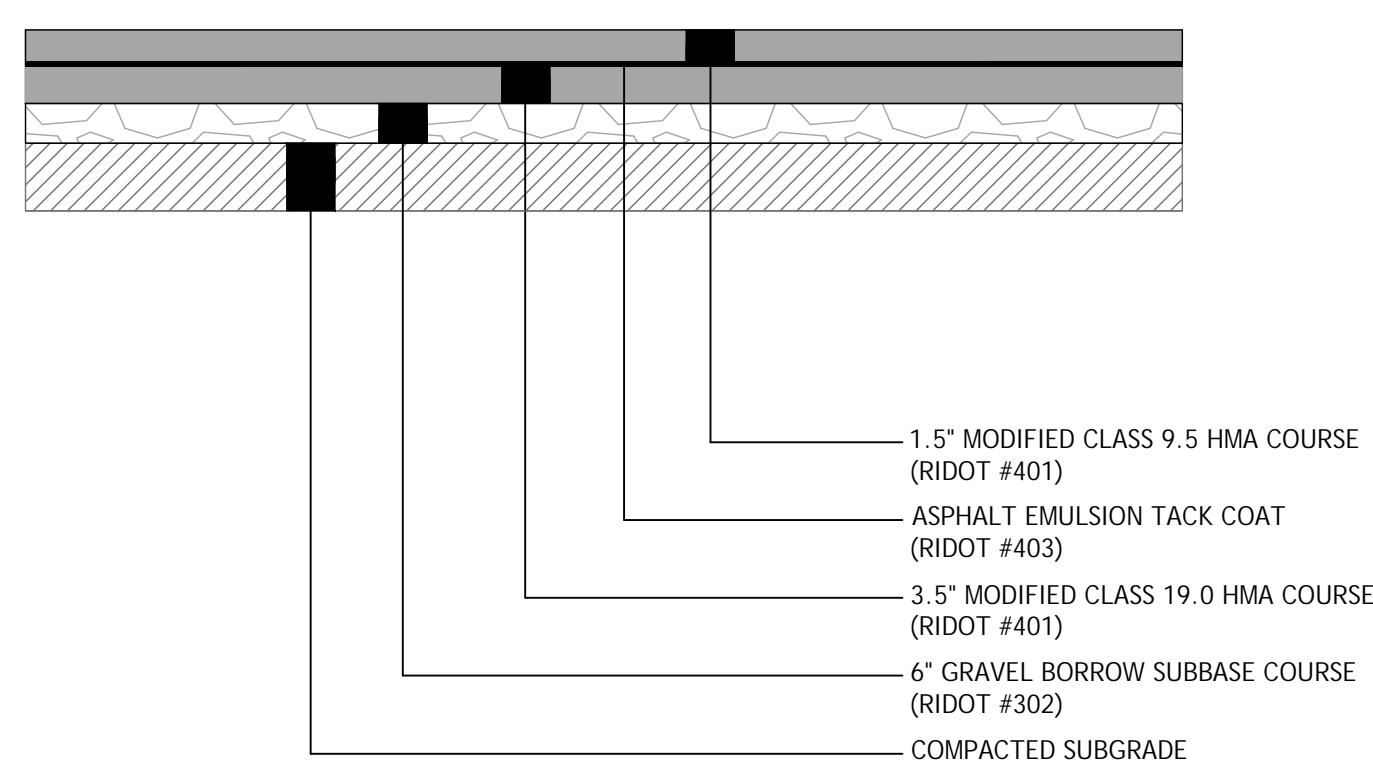
SUB:

Designed By: WTE Drawn By: MCZ Checked By: JB
Issue Date: 05/23/2025 Project No: 099020.003 Scale: AS SHOWN

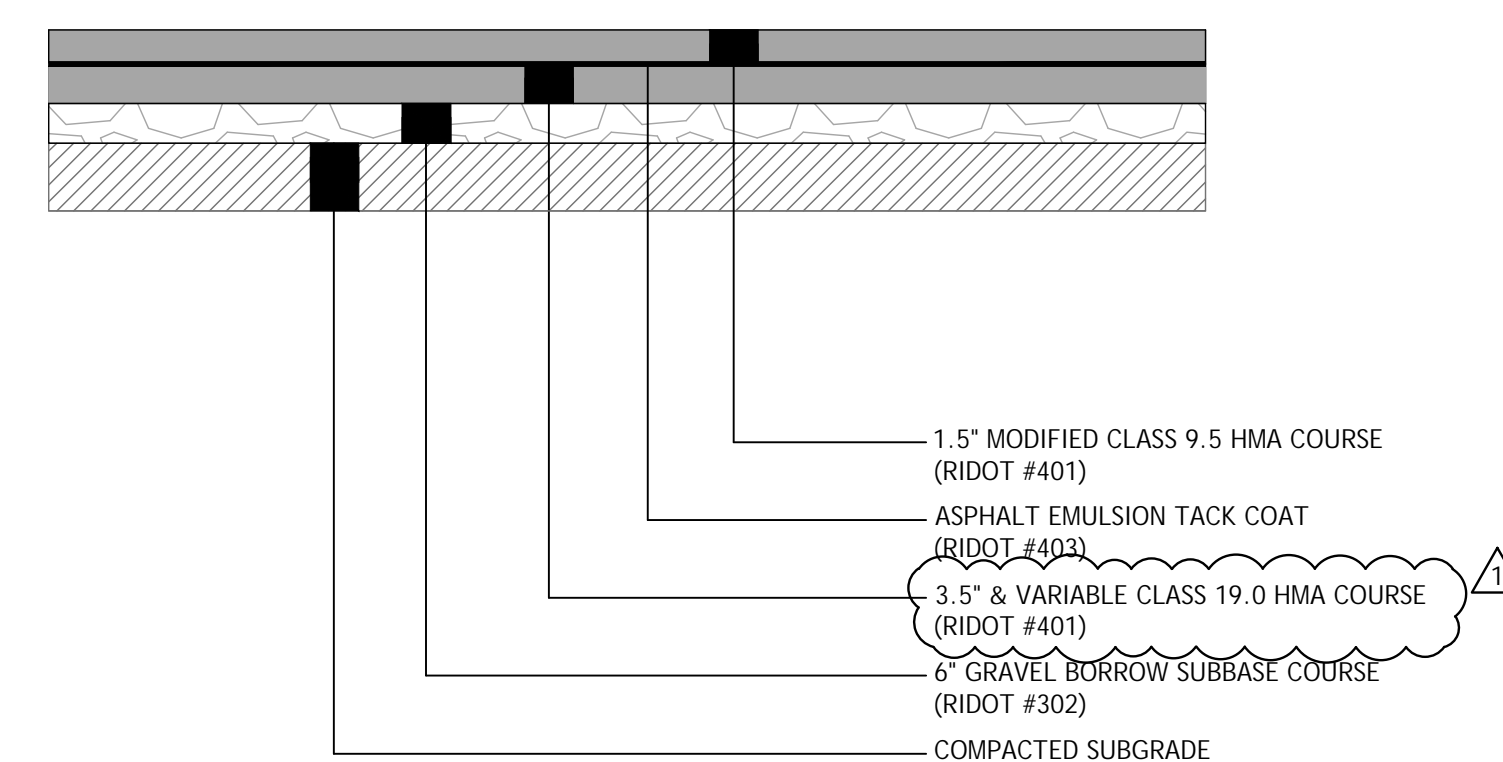
1 JB ADDENDUM 01 06/09/2025
REV BY DESCRIPTION DATE



1 5-INCH & VARIABLE ASPHALT OVERLAY SECTION & EDGE TREATMENT TO EXISTING AOA FENCE
NOT TO SCALE

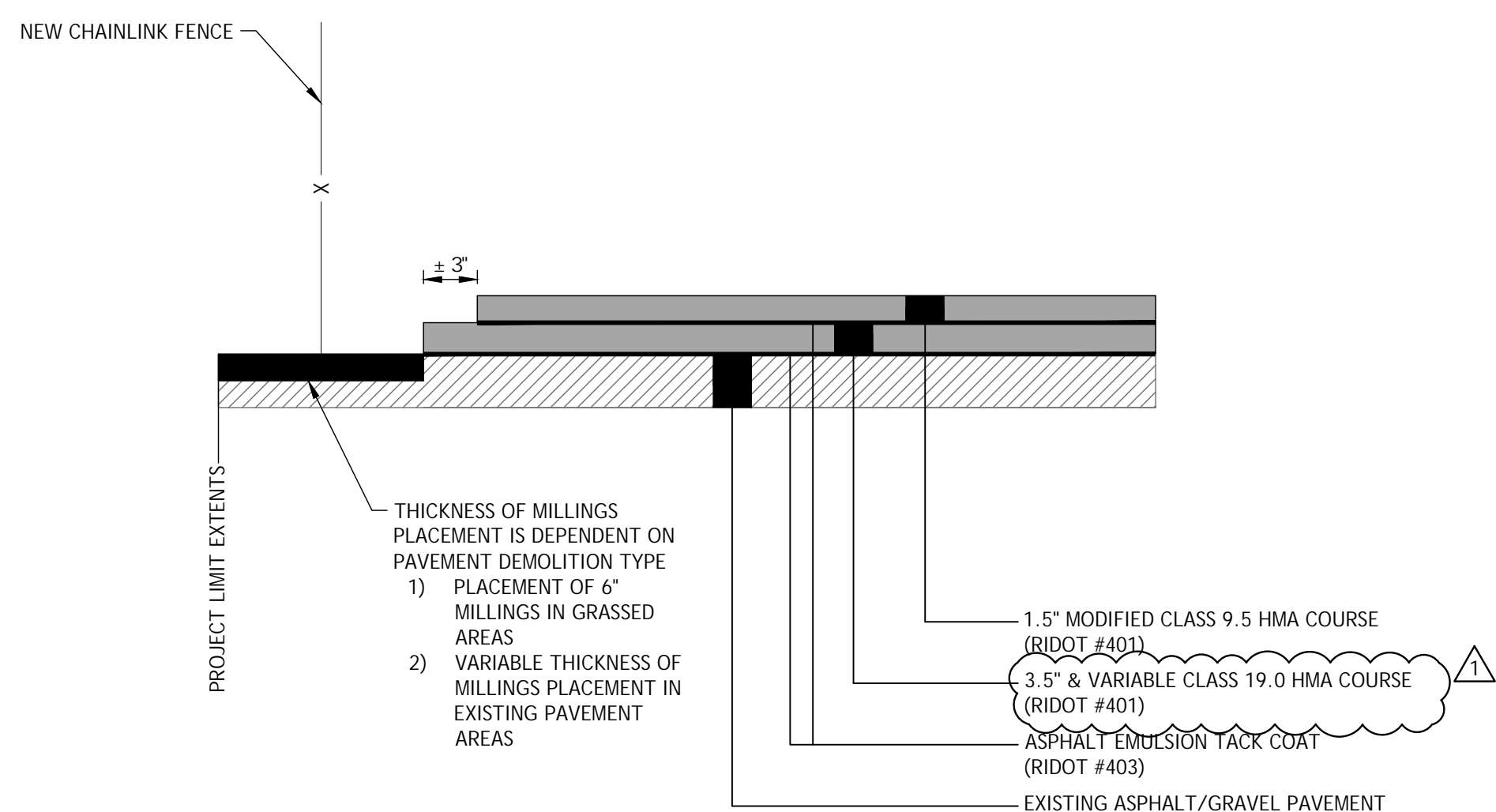


2 ASPHALT OVERLAY SECTION WITH SUBBASE
NOT TO SCALE

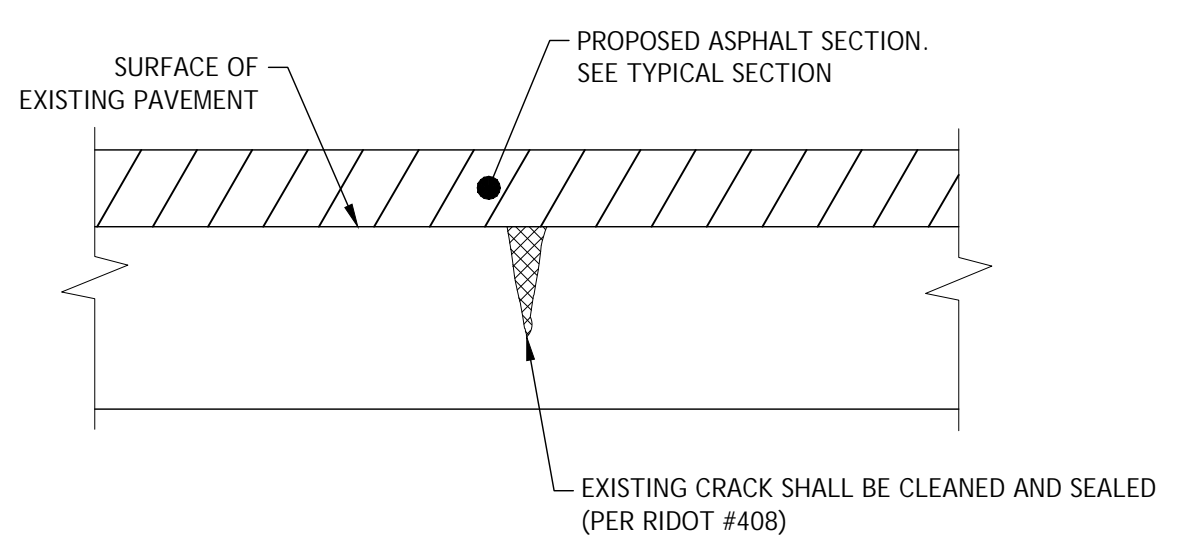


3 VARIABLE DEPTH ASPHALT OVERLAY SECTION WITH SUBBASE
NOT TO SCALE

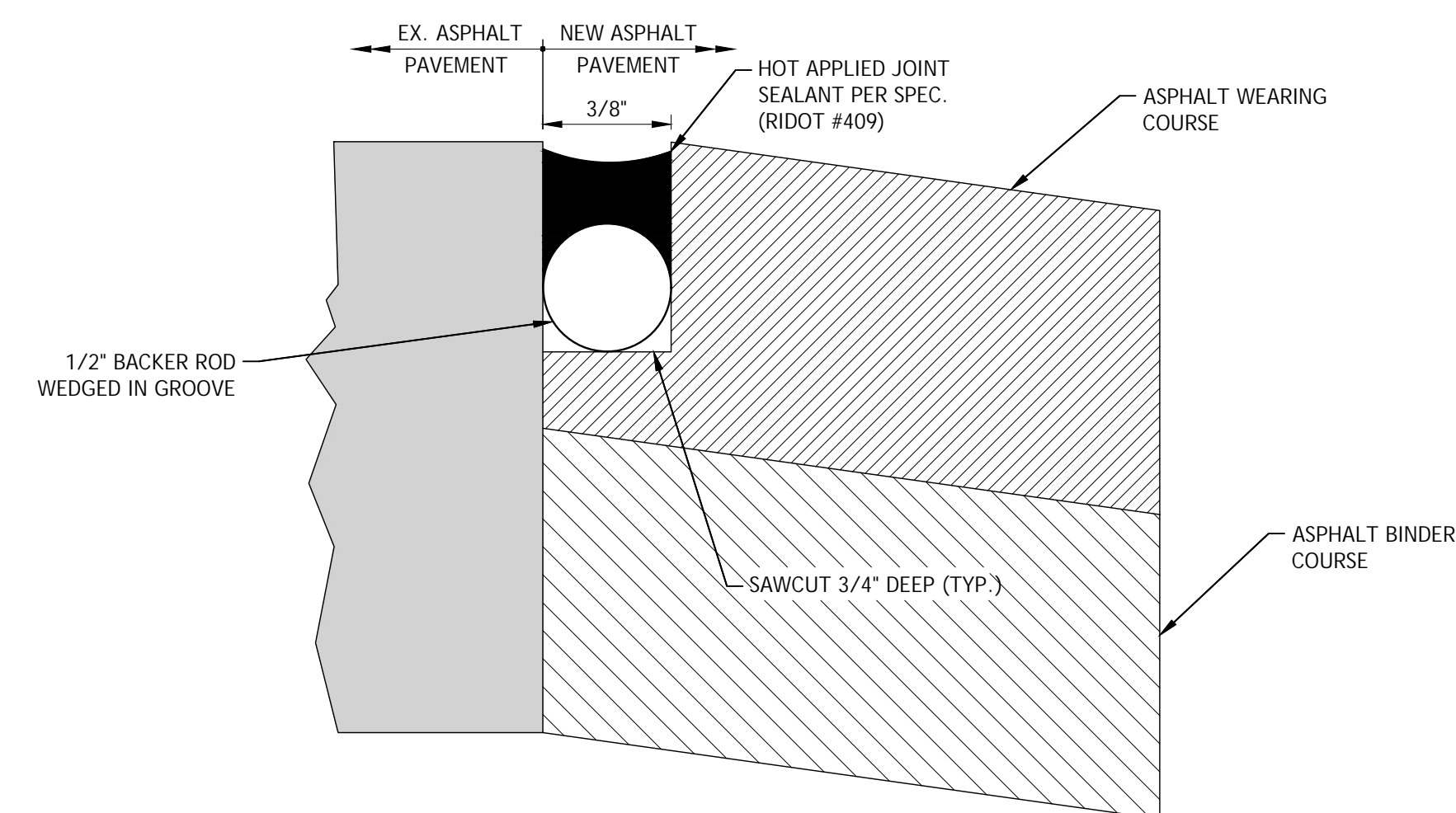
NOTES:
1. ASPHALT EMULSION TACK COAT SHALL ONLY BE APPLIED WHERE EXISTING ASPHALT IS PRESENT BELOW PROPOSED ASPHALT.



4 5-INCH & VARIABLE ASPHALT OVERLAY SECTION & EDGE TREATMENT TO NEW CHAINLINK FENCE
NOT TO SCALE



5 CRACK REPAIR
NOT TO SCALE



6 TYPE X ASPHALT PAVEMENT JOINT
NOT TO SCALE

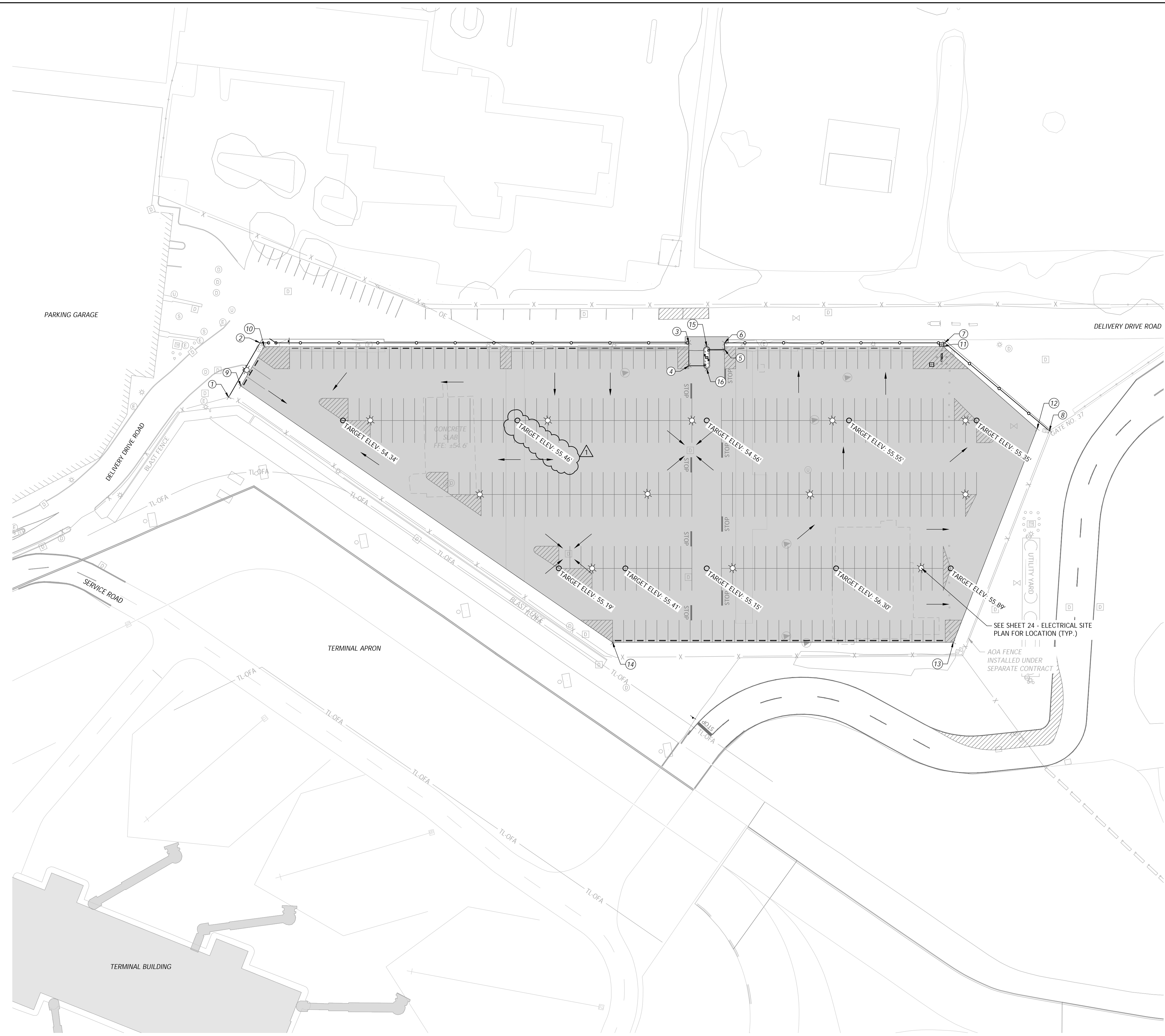
PROJECT: RHODE ISLAND T. F. GREEN INTERNATIONAL AIRPORT (PVD)
WARWICK, RHODE ISLAND
REHABILITATION OF DELIVERY DRIVE PARKING LOT
TITLE: SITE PAVING DETAILS

CERTIFICATION:
JOSEPH M. BAMBARA
No. 8964
REGISTERED PROFESSIONAL ENGINEER
CIVIL 06/13/25

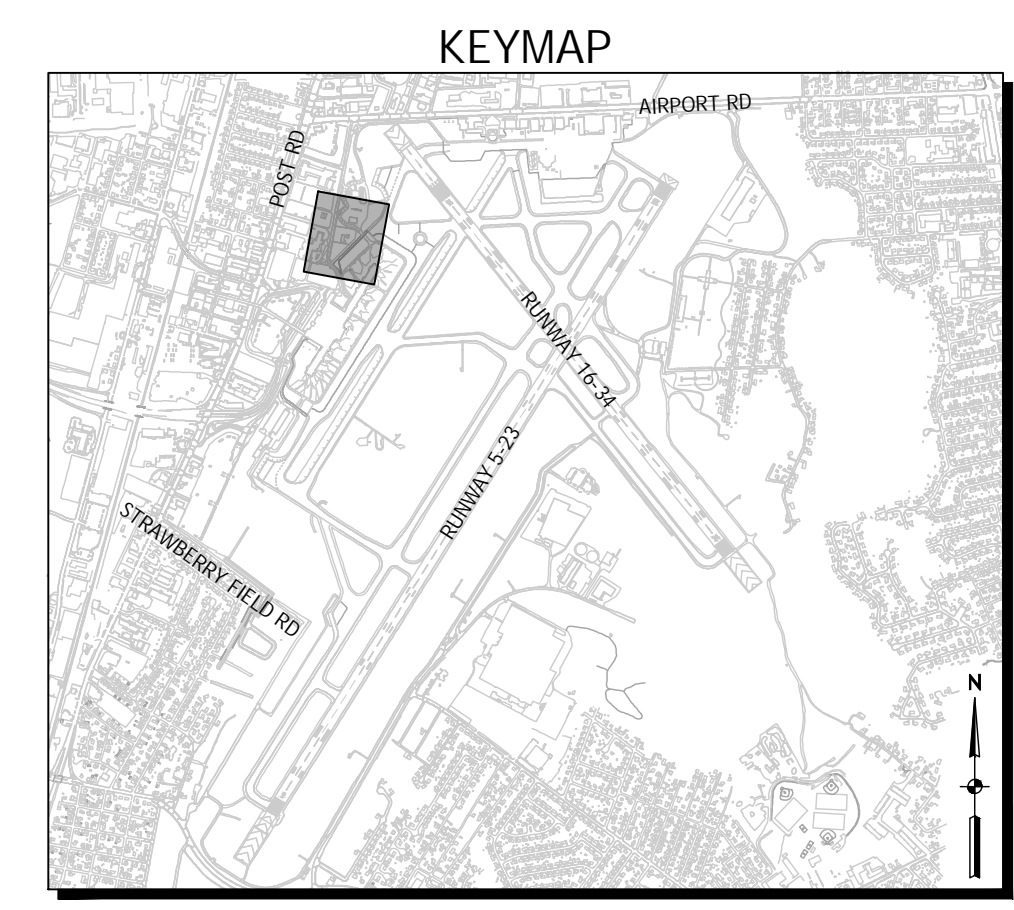
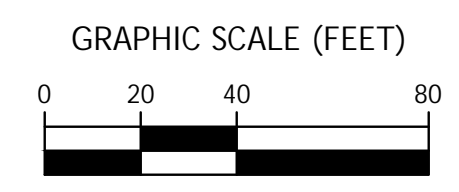
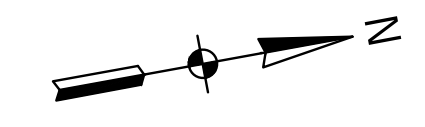
DRAWING NO. 14

File: V:\PROJECTS\ANY\K7\099020.003\09_DESIGN\DRAWINGS\01_SHEETS\PVD-099020-DETAILS.DWG
Saved: 6/10/2025 4:08:59 PM Plotted: 6/10/2025 4:14:19 PM Current User: Zander, Melissa LastSavedBy: 7787

File: V:\PROJECTS\ANY\K7\09020.003\09_DESIGN\DRAWINGS\01_SHEETS\PVD-09020-PLAN-LAYOUT.DWG
 Saved: 5/27/2025 11:24:55 AM Plotted: 6/9/2025 3:10:16 PM Current User: Zander, Melissa LastSavedBy: 7787



(R-1)



LEGEND

| | |
|--|---------------------|
| | DRAINAGE PATH ARROW |
|--|---------------------|

POINT TABLE

| POINT # | ELEVATION | NORTHING | EASTING | DESCRIPTION |
|---------|-----------|-------------|-------------|--------------------|
| 1 | 53.83 | 234905.0827 | 345730.3524 | FENCE END |
| 2 | 54.34 | 234937.9835 | 345691.5547 | FENCE CORNER |
| 3 | 55.14 | 235280.3778 | 345754.2599 | FENCE CORNER |
| 4 | 55.25 | 235277.0302 | 345772.5393 | FENCE END |
| 5 | 55.40 | 235307.9277 | 345764.8121 | FENCE END |
| 6 | 55.04 | 235308.9034 | 345759.4841 | FENCE CORNER |
| 7 | 54.89 | 235484.6111 | 345791.6627 | FENCE CORNER |
| 8 | 54.55 | 235555.3313 | 345877.1637 | FENCE END |
| 9 | 54.38 | 234916.4554 | 345723.2254 | PAVEMENT EDGE |
| 10 | 54.79 | 234940.8408 | 345695.1279 | PAVEMENT EDGE |
| 11 | 55.26 | 235482.9592 | 345794.4101 | PAVEMENT EDGE |
| 12 | 54.92 | 235545.7699 | 345873.8173 | PAVEMENT EDGE |
| 13 | 55.49 | 235447.7915 | 346031.9611 | PAVEMENT EDGE |
| 14 | 55.78 | 235175.6372 | 345982.1194 | PAVEMENT EDGE |
| 15 | 55.28 | 235294.1002 | 345759.8229 | CARD READER ISLAND |
| 16 | 55.14 | 235290.8577 | 345777.5285 | CARD READER ISLAND |

- LAYOUT & SPOT ELEVATION NOTES
- THE CONTRACTOR SHALL PROVIDE POSITIVE DRAINAGE TO EXISTING OPEN DRAINAGE STRUCTURES TO PROMOTE THE MOVEMENT OF STORMWATER RUNOFF.
 - UNDERGROUND UTILITIES, UNDERDRAINS, ELECTRICAL CONDUITS/CABLE, ETC. SHALL BE MARKED IN THE FIELD WITH PAINT AND WOODEN LATH AND TEMPORARY SIGNAGE TO ALERT GRADING EQUIPMENT OPERATORS OF UNDERGROUND UTILITY LOCATIONS.



Rhode Island T. F. Green International Airport
 2000 Post Road - Warwick - RI - 02886
 P: 401.691.2417 F: 401.691.2560
 W: www.flyri.com

PRIMARY: Drawing Copyright © 2025



272 West Exchange Street
 Providence, RI 02903
 www.chasolutions.com

SUB:

| | | |
|--|--|--|
| | | |
| | | |
| | | |

| | | |
|------------------------|------------------------|-----------------|
| Designed By: WTE | Drawn By: MCZ | Checked By: JB |
| Issue Date: 05/23/2025 | Project No: 099020.003 | Scale: AS SHOWN |

| | | |
|--------|-------------|------------|
| 1 JB | ADDENDUM 01 | 06/09/2025 |
| REV BY | DESCRIPTION | DATE |

PROJECT: RHODE ISLAND T. F. GREEN INTERNATIONAL AIRPORT (PVD)
 WARWICK, RHODE ISLAND
 REHABILITATION OF DELIVERY DRIVE PARKING LOT

TITLE: LAYOUT & SPOT ELEVATION PLAN

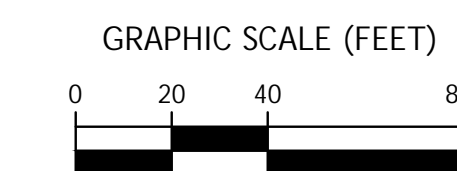
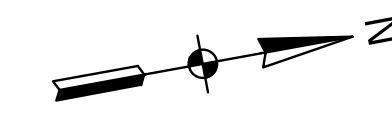
CERTIFICATION:

JOSEPH M. BAMBARA
 No. 8964
 REGISTERED PROFESSIONAL ENGINEER
 CIVIL 06/13/25

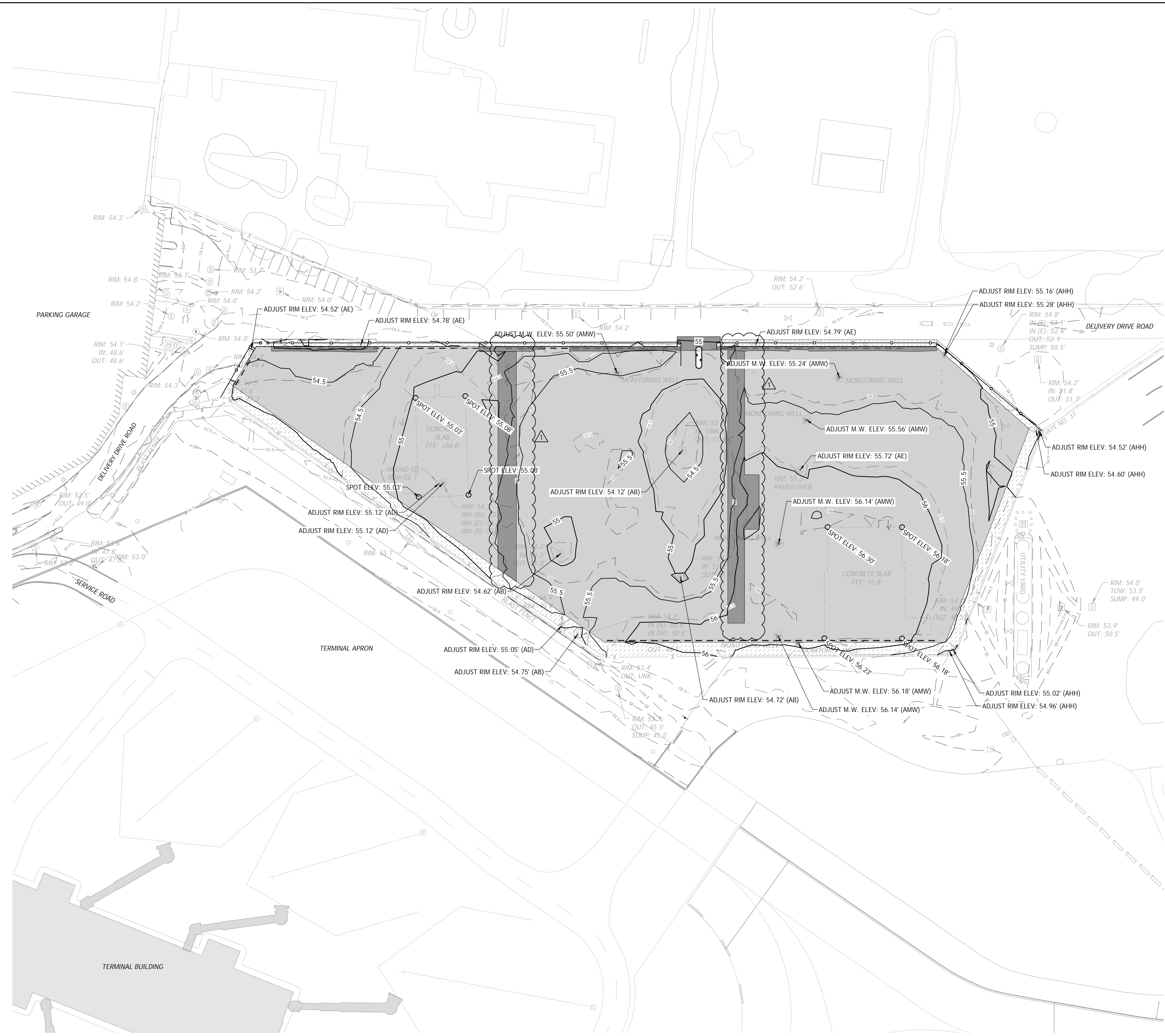
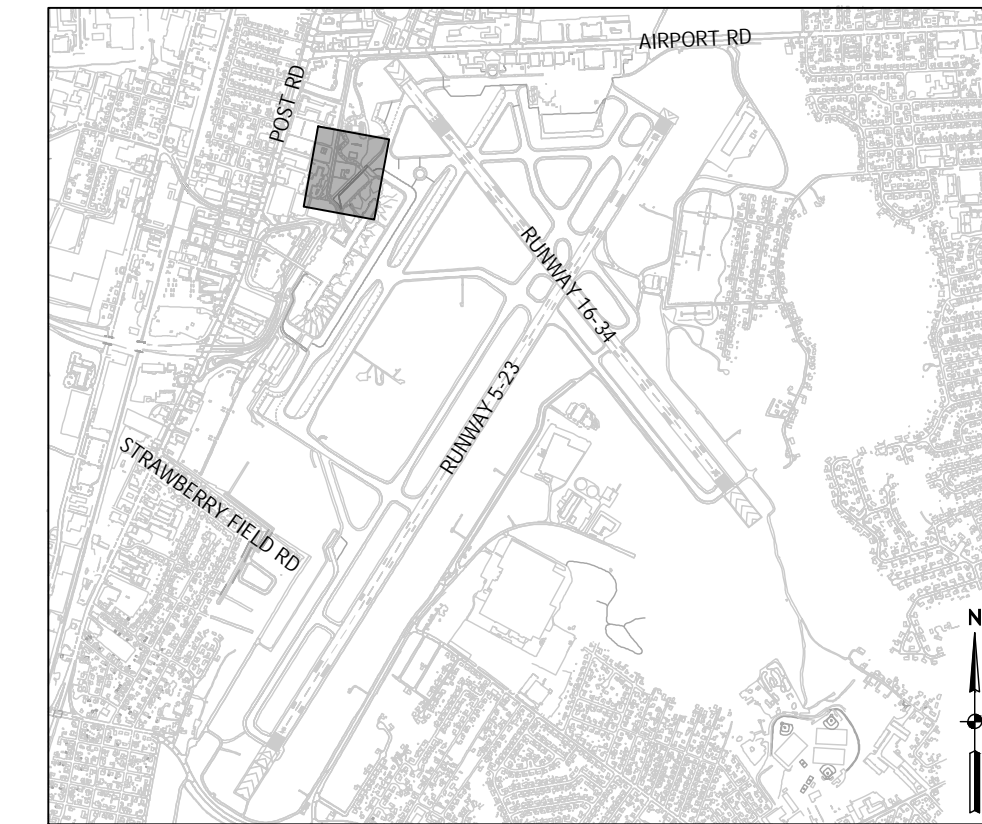
(R-1)



Rhode Island T. F. Green International Airport
2000 Post Road - Warwick - RI - 02886
p: 401.691.2417 f: 401.691.2560
w: www.flyri.com



KEYMAP



GRADING NOTES

1. STOCKPILE ALL TOPSOIL AND EMBANKMENT MATERIAL REMOVED IN AN ENGINEER APPROVED AREA AND AWAY FROM WATERS OF THE STATE. THE LIMITS OF THE STOCKPILE SHALL BE SURROUNDED AND PROTECTED BY SILT SOCK TO PREVENT ILLICIT DISCHARGES OF SEDIMENT FROM EXITING THE STOCKPILE AREA.
2. THE CONTRACTOR SHALL SEED AND MULCH ALL DISTURBED AREAS AFTER FINAL GRADING IS COMPLETE EXCEPT WHERE THE PLANS REQUIRE THE PLACEMENT OF SOD.
3. THE PROPOSED CONTOUR LINES ARE THE RESULT OF AN ENGINEERED GRADING DESIGN AND REFLECT A PLANNED INTENT WITH REGARD TO DRAINAGE AND MOVEMENT OF STORMWATER RUNOFF. THE CONTRACTOR SHALL CONTACT THE ENGINEER IF THEY HAVE ANY CONCERNS REGARDING THE INTENT OF THE DESIGN OR WITH THE CONTINUITY OF THE GRADES OR CONTOURS.
4. THE CONTRACTOR SHALL NOT DISTURB EXISTING VEGETATION UNLESS REQUIRED TO PERFORM A GRADING OPERATION.
5. UNDERGROUND UTILITIES, UNDERDRAINS, ELECTRICAL CONDUITS/CABLE, ETC. SHALL BE MARKED IN THE FIELD WITH PAINT AND WOODEN LATH AND TEMPORARY SIGNAGE TO ALERT GRADING EQUIPMENT OPERATORS OF UNDERGROUND UTILITY LOCATIONS.
6. FILL SLOPES SHALL BE NO GREATER THAN 4 (HORIZONTAL) TO 1 (VERTICAL).
7. EXCAVATED MATERIAL DEEMED TO BE UNSUITABLE SHALL TO BE USED FOR BACKFILL MATERIAL SHALL BE STOCKPILED ON THE PROJECT SITE IF A LOCATION HAS BEEN IDENTIFIED ON THE PLANS. IF NO SITE HAS BEEN IDENTIFIED ON THE PLANS, THE CONTRACTOR SHALL HAVE THE RESPONSIBILITY TO REMOVE AND DISPOSE THE MATERIAL OFF OF AIRPORT PROPERTY.

| | | | | | |
|--------------|------------|--------------|-------------|-------------|------------|
| DESIGNED BY: | WTE | DRAWN BY: | MCZ | CHECKED BY: | JB |
| ISSUE DATE: | 05/23/2025 | PROJECT NO.: | 099020.003 | SCALE: | AS SHOWN |
| REV. BY: | 1 JB | DESCRIPTION: | ADDENDUM 01 | DATE: | 06/09/2025 |

PROJECT: RHODE ISLAND T. F. GREEN INTERNATIONAL AIRPORT (PVD)
WARWICK, RHODE ISLAND
REHABILITATION OF DELIVERY DRIVE PARKING LOT

TITLE: GRADING PLAN

CERTIFICATION:

JOSEPH M. BAMBARA
No. 8964
REGISTERED PROFESSIONAL ENGINEER
CIVIL 06/13/25

File: V:\PROJECTS\ANY\K7\099020.003\09_DESIGN\DRAWINGS\01_SHEETS\PVD-099020-PLAN-GRAD.DWG
Saved: 6/9/2025 11:22:16 AM Plotted: 6/9/2025 12:34:50 PM Current User: Zander, Melissa LastSavedBy: 7787