



Rhode Island Airport Corporation

March 19, 2025

**ADDENDUM NO. 04
Invitation for Bids (IFB) No. 35821
Runway 5-23 Rehabilitation at
Rhode Island T. F. Green International Airport (PVD)**

Prospective proposers and all concerned are hereby notified of the following changes in the document(s) related to **IFB 35821**. These changes shall be incorporated in and shall become an integral part of the contract documents.

The following changes are to be incorporated into the Contract Documents:

1. In Section 00003 Table of Contents, in the Technical Specification, **INSERT** Item P-151 Clearing and Grubbing following Item P-101 Preparation/Removal of Existing Pavements.
2. **DELETE** Section 00310 Bid Summary Form in its entirety and **SUBSTITUTE THEREFOR** the attached Section 00310 Bid Summary Form. Section 00310 was revised to incorporate Add-On No. 2, No. 3 and revised the basis for bid comparisons.
3. **DELETE** Section 00320 Bid Form in its entirety and **SUBSTITUTE THEREFOR** the attached Section 00320 Bid Form.

In summary, Section 00320 was revised to:

- A. Increase the quantity of Installation and Removal of Compost Filter Sock to allow for placement around the on-airport property asphalt milling stockpile described in Item P-101 revised by this addendum.
- B. Incorporate Add-On No. 2 described in Item P-101 revised by this addendum.
- C. Incorporate Add-On No. 3 described in Item P-101 revised by this addendum.



Rhode Island Airport Corporation

4. In the Technical Specifications, **REMOVE** Technical Specification Item P-101 Preparation/Removal of Existing Pavements and **INSERT** the attached Technical Specification Item P-101 Preparation/Removal of Existing Pavements (Addendum No. 4).

In summary, P-101 was revised to:

- A. Indicate that the Base Bid shall include stockpiling asphalt millings on-airport property.
 - B. Introduce Add-On No. 2, which is a price adjustment to the cold milling, profile milling and milling to remove delaminated pavement items to dispose of the millings generated to off-airport property.
 - C. Introduce Add-On No. 3 which includes the site preparation and placement of asphalt millings in the general location of the stockpile area indicated for the Base Bid. Topsoil stripping and disposal of topsoil shall be paid for under Item T-905.
5. Following Technical Specification P-101, **INSERT** the attached Technical Specification, Item P-151 Clearing and Grubbing (Addendum No. 4). P-151 was added as a component of Add-On No. 3.

The following changes are to be incorporated into the Contract Drawings:

1. On Sheet GI002, **DELETE** General Note No. 21 in its entirety and **SUBSTITUTE THEREFOR**, "WITH THE EXCPTION OF ASPHALT MILLINGS, ALL SPOIL MATERIAL INCLUDING EXCESS TOPSOIL SHALL BE DISPOSED OF OFF-AIRPORT PROPERTY AT THE CONTRACTOR'S EXPENSE UNLESS OTHERWISE DIRECTED BY THE OWNER OR RPR.

UNDER THE BASE BID, ASPHALT MILLINGS SHALL BE STOCKPILED ON-AIRPORT PROPERTY AT THE LOCATION DESIGNATED ON THE CONTRACT DRAWINGS.

UNDER THE ADD-ON NO. 2, ASPHALT MILLINGS SHALL BE DISPOSED OF OFF-AIRPORT PROPERTY IN ACCORDANCE WITH THE CONTRACT DOCUMENTS.

UNDER ADD-ON NO. 3, ASPHALT MILLINGS SHALL BE SPREAD AND COMPACTED IN ACCORDANCE WITH THE CONTRACT DOCUMENTS IN THE LOCATION DESIGNATED ON THE CONTRACT DRAWINGS.

2. On Sheet GI003, in the sheet index, following Sheet GC100, **INSERT** Sheet GC101, Enlargement Plan-Asphalt Millings Spoil Area (Add-On No. 3) and re-number the subsequent Sheet Numbers.



Rhode Island Airport Corporation

3. **DELETE** sheet GC 100 in its entirety and **SUBSTITUTE THEREFOR** the attached GC 100.
4. Following GC100, **INSERT** the attached GC101.

Prospective proposer are directed to the following information:

1. Audited financial statements are required with the submission of your proposal. Please review SECTION 00010, paragraph two - which addresses submission of trade secrets or financial information. The financials can be submitted in a separate sealed and labeled envelope so as not to be a part of the public bid opening. The section is copied below for your reference:

RIAC accepts deliveries during normal business hours Monday through Friday 8:30am to 4:00pm EDT excluding national and local state holidays. It is the sole responsibility of the responding firm to ensure delivery of its bid on or before the due date/time, RIAC will not accept any bid that is received after the due date/time with NO EXCEPTIONS. RIAC will not accept electronic bid submissions (email, web, fax, etc.). RIAC accepts no financial responsibility for any costs incurred by a firm in responding to this IFB, participating in oral presentations, or meeting with RIAC prior to being awarded the contract. The proposals in response to this IFB become the property of RIAC and may be used by RIAC in any way it deems appropriate. All information submitted in response to this IFB is deemed public and subject to disclosure unless a separate redacted public copy is submitted, regardless of whether the information is marked confidential/proprietary. Firm's may redact in the public copy any trade secrets or commercial or financial information which is of a privileged or confidential nature pursuant to the Access to Public Records Act (R.I. Gen. Laws § 38-2 et. seq.). If Firm does not submit a redacted public copy, RIAC assumes that firm is not seeking confidential treatment for any of its information and thus, all information is subject to public disclosure. By submitting a proposal, the firm certifies that it has fully read and understands the IFB, has full knowledge of the scope of work to be provided, and accepts the terms and conditions under which the services are to be performed. RIAC will be the sole judge in determining as equivalent products (if applicable).



Rhode Island Airport Corporation

The answers to the following questions from Addendum No. 1 are addressed below:

1. Please confirm how the contractor will be compensated for testing, handling and legally disposing of asphalt millings containing per- and polyfluoroalkyl substances (PFAS) occurring in pavements at airports where these chemicals are used in firefighting foam as these millings would be considered hazardous waste.

Response: Any testing of materials leaving the project site shall be at the discretion of the Contractor. No additional compensation will be made for testing, handling and disposal of any materials leaving the project site.

2. Can we assume that all export from the Site is clean and unregulated?

Response: The geotechnical investigation was provided in Addendum No. 2, Item No. 2. No testing was performed beyond what is contained in this report. Any testing of materials leaving the project site shall be at the discretion of the Contractor. No additional compensation will be made for testing, handling and disposal of any materials leaving the project site.

####END OF ADDENDUM###

SECTION 00310 – BID SUMMARY FORM (Addendum No. 4)

FOR THE PERFORMANCE OF

RHODE ISLAND AIRPORT CORPORATION CONSTRUCTION CONTRACT NUMBER: 35821

PROJECT: Runway 5-23 Rehabilitation

LOCATION: Rhode Island T. F. Green International Airport, Warwick, Rhode Island

SUBMITTED BY: _____

ADDRESS: _____

NAME OF SURETY: _____

BASE BID

GRAND TOTAL BASE BID COST IN WORDS:
(Includes the sum of the Base Bid)

GRAND TOTAL BASE BID COST IN FIGURES:
(Includes the sum of the Base Bid)

\$ _____

ADD ON NO. 1

GRAND TOTAL ADD ON NO. 1 COST IN WORDS:
(Includes the sum of Add On No. 1)

GRAND TOTAL ADD ON NO. 1 COST IN FIGURES:
(Includes the sum of the Add On No. 1)

\$ _____

ADD ON NO. 2

GRAND TOTAL ADD ON NO. 2 COST IN WORDS:
(Includes the sum of Add On No. 2)

GRAND TOTAL ADD ON NO. 2 COST IN FIGURES:
(Includes the sum of the Add On No. 2)

\$ _____

ADD ON NO. 3

GRAND TOTAL ADD ON NO. 3 COST IN WORDS:
(Includes the sum of Add On No. 3)

GRAND TOTAL ADD ON NO. 3 COST IN FIGURES:
(Includes the sum of the Add On No. 3)

\$ _____

THE BASE BID SHALL BE USED TO DETERMINE THE APPARENT LOWEST RESPONSIBLE BIDDER.

FOLLOWING THE ESTABLISHMENT OF THE LOWEST RESPONSIBLE BIDDER AND PRIOR TO AWARD OF THE CONTRACT, THE AWARD OF ANY OF THE ADD-ONS OR COMBINATION OF ADD-ONS SHALL BE AT THE SOLE DISCRETION OF THE OWNER BASED ON AVAILABLE FUNDING.

NOTE: IN CASE OF A DISCREPANCY BETWEEN WORDS AND FIGURES, THE SUMS EXPRESSED IN WORDS NOTED ABOVE SHALL GOVERN.

END OF SECTION 00310

SECTION 00320 - BID FORM (Addendum No. 4)

To: Rhode Island Airport Corporation
Rhode Island T. F. Green International Airport
2000 Post Road
Warwick, Rhode Island 02886
ATTN: Office of Procurement

Date: _____
Time: _____

For:

**Runway 5-23 Rehabilitation
Rhode Island T. F. Green International Airport
Warwick, Rhode Island
RIAC Construction Contract No. 35821
(Addendum No. 4)**

The undersigned, having visited the site of the work and having familiarized themselves with local conditions affecting the cost of the work and with all requirements of the proposed Contract Documents, and duly issued Addenda to said documents, as acknowledged herein, propose to furnish and perform all labor, materials, necessary tools, expendable equipment, and all utility and transportation services necessary to perform and complete in a workmanlike manner all work required by said documents and Addenda.

ADDENDA: Bidder acknowledges receipt of and has examined the Addenda:

Addendum Number _____	dated _____
Addendum Number _____	dated _____
Addendum Number _____	dated _____
Addendum Number _____	dated _____

Acknowledged by _____ date _____.

BID PROPOSAL: This Proposal shall be filled in by the BIDDER with prices written in both words and numerals and the extensions made by him/her. In case of discrepancy between the words and numerals, the amounts shown in words shall govern.

BIDDER agrees to perform all necessary labor, furnish all materials and do all work described in the Specifications, including allowances, and shown on the Drawings, for the following lump sum prices and/or unit prices:

BID PROPOSAL: Bidder agrees to perform all of the work described in the Contract Documents, including allowances, for the sum of:

Total Base Bid:

_____ \$ _____
(Words shall govern) (Figures)

RHODE ISLAND AIRPORT CORPORATION
 RUNWAY 5-23 REHABILITATION
 RHODE ISLAND T. F. GREEN INTERNATIONAL AIRPORT
 WARWICK, RHODE ISLAND
 RIAC CONSTRUCTION CONTRACT NO. 35821
 SCHEDULE OF PRICES - ADDENDUM NO. 4

BASE BID

ITEM NO.	FAA SPEC NO.	QUANTITY	ITEM LIST ITEM DESCRIPTION (PRICE WRITTEN IN WORD)	UNIT PRICE	TOTAL AMOUNT
				IN FIGURES	
				DOLLARS	DOLLARS
1	C-100	1 LS	CONTRACTOR QUALITY CONTROL PROGRAM (CQCP)		
			AT		
			PER LUMP SUM		
2	C-102	65 EACH	INSTALLATION AND REMOVAL OF SACK INSERT CATCH BASIN INLET PROTECTION		
			AT		
			PER EACH		
3	C-102	11,000 LF	INSTALLATION AND REMOVAL OF COMPOST FILTER SOCK		
			AT		
			PER LINEAR FOOT		
4	C-102	1,425 LF	INSTALLATION AND REMOVAL OF BALED HAY EROSION CHECK STD. 9.1.0 AND SILT FENCE		
			AT		
			PER LINEAR FOOT		
5	C-102	2 EACH	INSTALLATION AND REMOVAL OF CONSTRUCTION ENTRANCE STD. 9.9.0		
			AT		
			PER EACH		
6	C-102	1 LS	COMPLIANCE WITH TEMPORARY AIR AND WATER POLLUTION, SOIL EROSION AND SEDIMENTATION CONTROL		
			AT		
			PER LUMP SUM		
7	C-102	10,500 LF	CLEAN AND FLUSH PIPE (ALL SIZES)		
			AT		
			PER LINEAR FOOT		
8	C-105	1 LS	MOBILIZATION (6% MAX.)		
			AT		
			PER LUMP SUM		
9	C-105	1 LS	ENGINEER'S FIELD OFFICE		
			AT		
			PER LUMP SUM		

RHODE ISLAND AIRPORT CORPORATION
 RUNWAY 5-23 REHABILITATION
 RHODE ISLAND T. F. GREEN INTERNATIONAL AIRPORT
 WARWICK, RHODE ISLAND
 RIAC CONSTRUCTION CONTRACT NO. 35821
 SCHEDULE OF PRICES - ADDENDUM NO. 4

BASE BID

ITEM NO.	FAA SPEC NO.	QUANTITY	ITEM LIST		UNIT PRICE	TOTAL AMOUNT
			ITEM DESCRIPTION (PRICE WRITTEN IN WORD)		IN FIGURES	
					DOLLARS	DOLLARS
10	C-105	1 LS	ENGINEER'S FIELD OFFICE EQUIPMENT			
			AT	PER LUMP SUM		
11	CX-106	1 LS	SAFETY, SECURITY AND MAINTENANCE OF TRAFFIC			
			AT	PER LUMP SUM		
12	CX-106	1,300 LF	REMOVAL AND INSTALLATION OF HAUL ROAD			
			AT	PER LINEAR FOOT		
13	CX-106	1 EACH	REMOVAL OF EXISTING SWING GATE			
			AT	PER EACH		
14	CX-106	1 EACH	24-FOOT DOUBLE SWING GATE			
			AT	PER EACH		
15	CX-107	30	CONTRACTOR DELAY - STANDBY TIME			
			AT	PER 15-MIN		
16	CX-107	18 HOUR	CONTRACTOR DELAY - DOWN TIME			
			AT	PER HOUR		
17	P-101	1 LS	PREPARATION OF JOINTS AND CRACKS			
			AT	PER LUMP SUM		

RHODE ISLAND AIRPORT CORPORATION
 RUNWAY 5-23 REHABILITATION
 RHODE ISLAND T. F. GREEN INTERNATIONAL AIRPORT
 WARWICK, RHODE ISLAND
 RIAC CONSTRUCTION CONTRACT NO. 35821
 SCHEDULE OF PRICES - ADDENDUM NO. 4

BASE BID

ITEM NO.	FAA SPEC NO.	QUANTITY	ITEM LIST ITEM DESCRIPTION (PRICE WRITTEN IN WORD)	UNIT PRICE IN FIGURES	TOTAL AMOUNT
				DOLLARS	DOLLARS
18	P-101	16,500 SY	AC PAVEMENT REMOVAL, 4-10" DEPTH		
			AT		
				PER SQUARE YARD	
19	P-101	16,200 SY	AC PAVEMENT REMOVAL, 10-18" DEPTH		
			AT		
				PER SQUARE YARD	
20	P-101	7,100 SY	PCC PAVEMENT REMOVAL, 6-10" DEPTH		
			AT		
				PER SQUARE YARD	
21	P-101	158,000 SY	COLD MILLING, TO A DEPTH OF UP TO 3 1/2"		
			AT		
				PER SQUARE YARD	
22	P-101	32,700 SY	PROFILE MILLING		
			AT		
				PER SQUARE YARD	
23	P-101	20,000 SY	MILLING TO REMOVE DELAMINATED PAVMENT		
			AT		
				PER SQUARE YARD	
24	P-101	9 EACH	REMOVE AND DISPOSE EXISTING DRAINAGE STRUCTURE		
			AT		
				PER EACH	
25	P-101	1,080 LF	REMOVE AND DISPOSE EXISTING DRAINAGE PIPE		
			AT		
				PER LINEAR FOOT	
26	P-101	10 EACH	PARTIAL REMOVAL OF BURIED STRUCTURE		
			AT		
				PER EACH	

RHODE ISLAND AIRPORT CORPORATION
RUNWAY 5-23 REHABILITATION
RHODE ISLAND T. F. GREEN INTERNATIONAL AIRPORT
WARWICK, RHODE ISLAND
RIAC CONSTRUCTION CONTRACT NO. 35821
SCHEDULE OF PRICES - ADDENDUM NO. 4

BASE BID

ITEM NO.	FAA SPEC NO.	QUANTITY	ITEM LIST ITEM DESCRIPTION (PRICE WRITTEN IN WORD)	UNIT PRICE	TOTAL AMOUNT
				IN FIGURES	
				DOLLARS	DOLLARS
27	P-152	12,200 CY	UNCLASSIFIED EXCAVATION AT		
			PER CUBIC YARD		
28	P-152	1,300 CY	UNCLASSIFIED EXCAVATION (FOR UNDERCUT REPLACEMENT) AT		
			PER CUBIC YARD		
29	P-209	1,300 CY	CRUSHED AGGREGATE BASE COURSE (FOR UNDERCUT REPLACEMENT) AT		
			PER CUBIC YARD		
30	P-209	12,400 CY	CRUSHED AGGREGATE BASE COURSE AT		
			PER CUBIC YARD		
31	P-209	19,500 SY	SEPARATION GEOTEXTILE AT		
			PER SQUARE YARD		
32	P-401	17,100 TON	ASPHALT LEVELING COURSE, GRADATION 3 AT		
			PER TON		
33	P-401	31,500 TON	ASPHALT SURFACE COURSE, GRADATION 2 AT		
			PER TON		
34	P-401	5,300 TON	ASPHALT BASE COURSE, GRADATION 1 AT		
			PER TON		
35	P-603	32,000 GAL	EMULSIFIED ASPHALT TACK COAT AT		
			PER GALLON		

RHODE ISLAND AIRPORT CORPORATION
RUNWAY 5-23 REHABILITATION
RHODE ISLAND T. F. GREEN INTERNATIONAL AIRPORT
WARWICK, RHODE ISLAND
RIAC CONSTRUCTION CONTRACT NO. 35821
SCHEDULE OF PRICES - ADDENDUM NO. 4

BASE BID

ITEM NO.	FAA SPEC NO.	QUANTITY	ITEM LIST ITEM DESCRIPTION (PRICE WRITTEN IN WORD)	UNIT PRICE	TOTAL AMOUNT
				IN FIGURES	
				DOLLARS	DOLLARS
36	P-605	3,200 LF	JOINT SEALING FILLER		
			AT		
			PER LINEAR FOOT		
37	P-620	1 LS	SURFACE PREPARATION		
			AT		
			PER LUMP SUM		
38	P-620	222,000 SF	MARKING		
			AT		
			PER SQUARE FOOT		
39	P-620	116,000 SF	TEMPORARY MARKING		
			AT		
			PER SQUARE FOOT		
40	P-620	18,500 LB	REFLECTIVE MEDIA		
			AT		
			PER POUND		
41	P-620	6,800 SF	REMOVAL (OBLITERATION) OF EXISTING MARKINGS		
			AT		
			PER SQUARE FOOT		
42	P-621	102,000 SY	SAW-CUT GROOVING		
			AT		
			PER SQUARE YARD		
43	D-701	240 LF	12-INCH REINFORCED CONCRETE PIPE, TYPE V		
			AT		
			PER LINEAR FOOT		
44	D-701	80 LF	15-INCH REINFORCED CONCRETE PIPE, TYPE V		
			AT		
			PER LINEAR FOOT		

RHODE ISLAND AIRPORT CORPORATION
RUNWAY 5-23 REHABILITATION
RHODE ISLAND T. F. GREEN INTERNATIONAL AIRPORT
WARWICK, RHODE ISLAND
RIAC CONSTRUCTION CONTRACT NO. 35821
SCHEDULE OF PRICES - ADDENDUM NO. 4

BASE BID

ITEM NO.	FAA SPEC NO.	QUANTITY	ITEM LIST		UNIT PRICE	TOTAL AMOUNT
			ITEM DESCRIPTION (PRICE WRITTEN IN WORD)		IN FIGURES	
					DOLLARS	DOLLARS
45	D-701	200 LF	18-INCH REINFORCED CONCRETE PIPE, TYPE V			
			AT	PER LINEAR FOOT		
46	D-701	40 LF	24-INCH REINFORCED CONCRETE PIPE, TYPE V			
			AT	PER LINEAR FOOT		
47	D-701	80 LF	6-INCH CORRUGATED HDPE PIPE, TYPE S			
			AT	PER LINEAR FOOT		
48	D-701	50 LF	8-INCH CORRUGATED HDPE PIPE, TYPE S			
			AT	PER LINEAR FOOT		
49	D-701	50 LF	12-INCH CORRUGATED HDPE PIPE, TYPE S			
			AT	PER LINEAR FOOT		
50	D-701	30 LF	15-INCH CORRUGATED HDPE PIPE, TYPE S			
			AT	PER LINEAR FOOT		
51	D-701	80 LF	18-INCH CORRUGATED HDPE PIPE, TYPE S			
			AT	PER LINEAR FOOT		
52	D-701	14 LF	24-INCH CORRUGATED HDPE PIPE, TYPE S			
			AT	PER LINEAR FOOT		
53	DX-703	1,350 LF	INSTALL CURED-IN-PLACE-PIPE IN EXISTING DRAIN PIPE (42-INCH TO 48-INCH DIAMETER)			
			AT	PER LINEAR FOOT		

RHODE ISLAND AIRPORT CORPORATION
 RUNWAY 5-23 REHABILITATION
 RHODE ISLAND T. F. GREEN INTERNATIONAL AIRPORT
 WARWICK, RHODE ISLAND
 RIAC CONSTRUCTION CONTRACT NO. 35821
 SCHEDULE OF PRICES - ADDENDUM NO. 4

BASE BID

ITEM NO.	FAA SPEC NO.	QUANTITY	ITEM LIST		UNIT PRICE	TOTAL AMOUNT
			ITEM DESCRIPTION (PRICE WRITTEN IN WORD)		IN FIGURES	
					DOLLARS	DOLLARS
54	D-705	1,900 LF	6-INCH PERFORATED CORRUGATED PE UNDERDRAIN PIPE			
			AT			
				PER LINEAR FOOT		
55	D-705	1,000 LF	6-INCH NON-PERFORATED CORRUGATED PE UNDERDRAIN PIPE			
			AT			
				PER LINEAR FOOT		
56	D-751	6 EACH	DRAINAGE MANHOLE, RI STD. 4.2.0			
			AT			
				PER EACH		
57	D-751	9 EACH	CATCH BASIN, RI STD. 4.4.0M			
			AT			
				PER EACH		
58	D-751	4 EACH	DIVERSION STRUCTURE			
			AT			
				PER EACH		
59	D-751	2 EACH	ADJUSTMENT TO EXISTING DRAINAGE STRUCTURE			
			AT			
				PER EACH		
60	D-751	3 EACH	REMOVE AND REPLACE FRAME AND GRATE (OR COVER)			
			AT			
				PER EACH		
61	D-751	19 EACH	CLEANOUT FOR UNDERDRAIN			
			AT			
				PER EACH		
62	D-751	2 EACH	CLEANOUT FOR INFILTRATION CHAMBERS			
			AT			
				PER EACH		

RHODE ISLAND AIRPORT CORPORATION
 RUNWAY 5-23 REHABILITATION
 RHODE ISLAND T. F. GREEN INTERNATIONAL AIRPORT
 WARWICK, RHODE ISLAND
 RIAC CONSTRUCTION CONTRACT NO. 35821
 SCHEDULE OF PRICES - ADDENDUM NO. 4

BASE BID

ITEM NO.	FAA SPEC NO.	QUANTITY	ITEM LIST ITEM DESCRIPTION (PRICE WRITTEN IN WORD)	UNIT PRICE	TOTAL AMOUNT
				IN FIGURES	
				DOLLARS	DOLLARS
63	D-751	7 EACH	MODIFICATION OF CLEANOUT		
			AT		
			PER EACH		
64	DX-753	90 VF	MANHOLE REHABILITATION		
			AT		
			PER VERTICAL FOOT		
65	DX-790	1 LS	UNDERGROUND INFILTRATION CHAMBER SYSTEM 1		
			AT		
			PER LUMP SUM		
66	DX-790	1 LS	UNDERGROUND INFILTRATION CHAMBER SYSTEM 2		
			AT		
			PER LUMP SUM		
67	DX-791	630 LF	UNDERGROUND STONE TRENCH		
			AT		
			PER LINEAR FOOT		
68	DX-800	3 DAY	SOFT DIGS		
			AT		
			PER DAY		
69	T-901	55,600 SY	SEEDING, WET APPLIED		
			AT		
			PER SQUARE YARD		
70	T-905	5,000 CY	TOPSOIL (OBTAINED ON-SITE OR REMOVED FROM STOCKPILE)		
			AT		
			PER CUBIC YARD		
71	T-908	55,600 SY	MULCHING		
			AT		
			PER SQUARE YARD		

RHODE ISLAND AIRPORT CORPORATION
RUNWAY 5-23 REHABILITATION
RHODE ISLAND T. F. GREEN INTERNATIONAL AIRPORT
WARWICK, RHODE ISLAND
RIAC CONSTRUCTION CONTRACT NO. 35821
SCHEDULE OF PRICES - ADDENDUM NO. 4

BASE BID

ITEM NO.	FAA SPEC NO.	QUANTITY	ITEM LIST		UNIT PRICE	TOTAL AMOUNT
			ITEM DESCRIPTION (PRICE WRITTEN IN WORD)		IN FIGURES	
					DOLLARS	DOLLARS
72	L-107	1 EACH	SUPPLEMENTAL WIND CONE ASSEMBLY, L-806, STYLE I-B, SIZE 1, LED			
			AT			
					PER EACH	
73	L-107	1 EACH	REMOVAL OF EXISTING WIND CONE ASSEMBLY AND FOUNDATION			
			AT			
					PER EACH	
74	L-108	70,500 LF	NO. 8 AWG, 5KV, L-824, TYPE C AIRFIELD LIGHTING CABLE			
			AT			
					PER LINEAR FOOT	
75	L-108	28,000 LF	NO. 6 AWG, SOLID, BARE COPPER COUNTERPOISE WIRE			
			AT			
					PER LINEAR FOOT	
76	L-108	39,000 LF	CABLE REMOVAL, PER CONDUIT, REGARDLESS OF NUMBER OF CABLES			
			AT			
					PER LINEAR FOOT	
77	L-108	3,000 LF	TEMPORARY NO. 8 AWG, 5KV, L-824, TYPE C AIRFIELD LIGHTING CABLE JUMPER, PROTECTED			
			AT			
					PER LINEAR FOOT	
78	L-109	1 LS	AIRPORT ELECTRIC BUILDING EQUIPMENT			
			AT			
					PER LUMP SUM	
79	L-110	15,900 LF	NON- ENCASED ELECTRICAL CONDUIT, 1-WAY, 2-INCH SCHEDULE 80 PVC, IN TURF			
			AT			
					PER LINEAR FOOT	
80	L-110	1,180 LF	CONCRETE ENCASED ELECTRICAL DUCT BANK, 4-WAY, 4-INCH SCHEDULE 40 PVC, IN PAVEMENT OR TURF			
			AT			
					PER LINEAR FOOT	

RHODE ISLAND AIRPORT CORPORATION
RUNWAY 5-23 REHABILITATION
RHODE ISLAND T. F. GREEN INTERNATIONAL AIRPORT
WARWICK, RHODE ISLAND
RIAC CONSTRUCTION CONTRACT NO. 35821
SCHEDULE OF PRICES - ADDENDUM NO. 4

BASE BID

ITEM NO.	FAA SPEC NO.	QUANTITY	ITEM LIST		UNIT PRICE	TOTAL AMOUNT
			ITEM DESCRIPTION (PRICE WRITTEN IN WORD)		IN FIGURES	
					DOLLARS	DOLLARS
81	L-110	3,200 LF	CONCRETE ENCASED ELECTRICAL CONDUIT, 1-WAY, 2-INCH SCHEDULE 40 PVC, IN PAVEMENT			
			AT			
					PER LINEAR FOOT	
82	L-110	6,300 LF	CONCRETE ENCASED ELECTRICAL CONDUIT, 1-WAY, 1 1/2-INCH SCHEDULE 80 PVC, IN PAVEMENT			
			AT			
					PER LINEAR FOOT	
83	L-110	3,600 LF	CONCRETE ENCASED ELECTRICAL CONDUIT, 1-WAY, 2-INCH SCHEDULE 40 PVC, IN EXISTING PAVEMENT INCLUDING ASPHALT RESTORATION			
			AT			
					PER LINEAR FOOT	
84	L-110	720 LF	CONCRETE ENCASED ELECTRICAL CONDUIT, 1-WAY, 1-INCH PVC COATED RGS, IN PAVEMENT			
			AT			
					PER LINEAR FOOT	
85	L-110	1,400 LF	REMOVAL OF CONCRETE ENCASED ELECTRICAL DUCT BANK, ALL TYPES AND SIZES			
			AT			
					PER LINEAR FOOT	
86	LX-113	860 LF	2-INCH SCHEDULE 80 HDPE CONDUIT INSTALLED BY DIRECTIONAL DRILLING			
			AT			
					PER LINEAR FOOT	
87	L-115	10 EACH	PRECAST AIRPORT ELECTRICAL PULL BOX			
			AT			
					PER EACH	
88	L-115	19 EACH	ELECTRICAL JUNCTION CAN			
			AT			
					PER EACH	
89	L-115	12 EACH	REMOVAL OF ELECTRICAL PULL BOX OR MANHOLE			
			AT			
					PER EACH	

RHODE ISLAND AIRPORT CORPORATION
RUNWAY 5-23 REHABILITATION
RHODE ISLAND T. F. GREEN INTERNATIONAL AIRPORT
WARWICK, RHODE ISLAND
RIAC CONSTRUCTION CONTRACT NO. 35821
SCHEDULE OF PRICES - ADDENDUM NO. 4

BASE BID

ITEM NO.	FAA SPEC NO.	QUANTITY	ITEM LIST		UNIT PRICE	TOTAL AMOUNT
			ITEM DESCRIPTION (PRICE WRITTEN IN WORD)		IN FIGURES	
					DOLLARS	DOLLARS
90	L-115	41 EACH	REMOVAL OF ELECTRICAL JUNCTION CAN			
			AT			
				PER EACH		
91	L-115	1 EACH	ELECTRICAL STRUCTURE RIM ELEVATION ADJUSTMENT			
			AT			
				PER EACH		
92	L-125	72 EACH	REINSTALLATION OF EXISTING RUNWAY TOUCHDOWN ZONE LIGHT FIXTURE, SEMI-FLUSH, LED			
			AT			
				PER EACH		
93	L-125	95 EACH	HIGH INTENSITY RUNWAY EDGE LIGHT FIXTURE, ELEVATED, LED			
			AT			
				PER EACH		
94	L-125	7 EACH	HIGH INTENSITY RUNWAY EDGE LIGHT FIXTURE, SEMI-FLUSH, LED			
			AT			
				PER EACH		
95	L-125	172 EACH	RUNWAY CENTERLINE LIGHT FIXTURE, SEMI-FLUSH, LED			
			AT			
				PER EACH		
96	L-125	81 EACH	MEDIUM INTENSITY TAXIWAY EDGE LIGHT FIXTURE, ELEVATED, LED			
			AT			
				PER EACH		
97	L-125	7 EACH	MEDIUM INTENSITY TAXIWAY EDGE LIGHT FIXTURE, ELEVATED, QUARTZ			
			AT			
				PER EACH		
98	L-125	12 EACH	RUNWAY GUARD LIGHT FIXTURE, ELEVATED, LED			
			AT			
				PER EACH		

RHODE ISLAND AIRPORT CORPORATION
RUNWAY 5-23 REHABILITATION
RHODE ISLAND T. F. GREEN INTERNATIONAL AIRPORT
WARWICK, RHODE ISLAND
RIAC CONSTRUCTION CONTRACT NO. 35821
SCHEDULE OF PRICES - ADDENDUM NO. 4

BASE BID

ITEM NO.	FAA SPEC NO.	QUANTITY	ITEM LIST		UNIT PRICE	TOTAL AMOUNT
			ITEM DESCRIPTION (PRICE WRITTEN IN WORD)		IN FIGURES	
					DOLLARS	DOLLARS
99	L-125	107 EACH	ADJUSTMENT OF EXISTING LIGHT BASE TO PROPOSED ELEVATION			
			AT			
				PER EACH		
10	L-125	6 EACH	L-868B LOAD BEARING LIGHT BASE, FULL DEPTH IN PAVEMENT			
			AT			
				PER EACH		
101	L-125	113 EACH	L-868B LOAD BEARING LIGHT BASE, SHALLOW DEPTH IN PAVEMENT			
			AT			
				PER EACH		
102	L-125	152 EACH	L-867B NON LOAD BEARING LIGHT BASE, IN PAVEMENT			
			AT			
				PER EACH		
103	L-125	9 EACH	AIRFIELD GUIDANCE SIGN AND FOUNDATION, LED, SIZE 3, 1 MODULE			
			AT			
				PER EACH		
104	L-125	3 EACH	AIRFIELD GUIDANCE SIGN AND FOUNDATION, LED, SIZE 3, 2 MODULES			
			AT			
				PER EACH		
105	L-125	9 EACH	AIRFIELD GUIDANCE SIGN AND FOUNDATION, LED, SIZE 3, 3 MODULES			
			AT			
				PER EACH		
106	L-125	1 EACH	AIRFIELD GUIDANCE SIGN REPLACEMENT ON EXISTING FOUNDATION, LED, SIZE 3, 1 MODULES			
			AT			
				PER EACH		
107	L-125	29 EACH	REMOVAL OF EXISTING GUIDANCE SIGN AND FOUNDATION			
			AT			
				PER EACH		

RHODE ISLAND AIRPORT CORPORATION
RUNWAY 5-23 REHABILITATION
RHODE ISLAND T. F. GREEN INTERNATIONAL AIRPORT
WARWICK, RHODE ISLAND
RIAC CONSTRUCTION CONTRACT NO. 35821
SCHEDULE OF PRICES - ADDENDUM NO. 4

BASE BID

ITEM NO.	FAA SPEC NO.	QUANTITY	ITEM LIST		UNIT PRICE	TOTAL AMOUNT
			ITEM DESCRIPTION (PRICE WRITTEN IN WORD)		IN FIGURES	
					DOLLARS	DOLLARS
108	L-125	205 EACH	REMOVAL OF EXISTING LIGHT FIXTURE AND APPURTENANCES, ALL TYPES, SALVAGE AS REQUIRED FOR REINSTALLATION			
			AT			
				PER EACH		
109	L-125	60 EACH	PARTIAL DEPTH REMOVAL OF EXISTING LIGHT BASE & FIXTURE, ALL TYPES			
			AT			
				PER EACH		
110	L-125	218 EACH	REMOVAL OF EXISTING LIGHT BY CORE DRILLING, ALL TYPES			
			AT			
				PER EACH		
111	L-125	73 EACH	REMOVAL OF EXISTING LIGHT BASE, ALL TYPES			
			AT			
				PER EACH		
112	L-125	1 LS	SPARE PARTS (NOT TO EXCEED \$10,000 OR 10% TOTAL COST)			
			AT			
				PER LUMP SUM		
113	L-125	1 LS	PHOTOMETRIC TESTING OF AIRFIELD LIGHTING FIXTURES			
			AT			
				PER LUMP SUM		
114	L-125	1 LS	REMOVAL OF EXISTING VASI SYSTEM AND CONCRETE FOUNDATIONS			
			AT			
				PER LUMP SUM		
115	L-125	1 LS	PRECISION APPROACH PATH INDICATOR (PAPI) AND FOUNDATIONS, 4-BOX, LED			
			AT			
				PER LUMP SUM		
116	LX-130	5 EACH	RUNWAY WEATHER INFORMATION SYSTEM (RWIS) IN-PAVEMENT SENSOR AND CABLE REMOVAL			
			AT			
				PER EACH		

RHODE ISLAND AIRPORT CORPORATION
RUNWAY 5-23 REHABILITATION
RHODE ISLAND T. F. GREEN INTERNATIONAL AIRPORT
WARWICK, RHODE ISLAND
RIAC CONSTRUCTION CONTRACT NO. 35821
SCHEDULE OF PRICES - ADDENDUM NO. 4

BASE BID

ITEM NO.	FAA SPEC NO.	QUANTITY	ITEM LIST ITEM DESCRIPTION (PRICE WRITTEN IN WORD)	UNIT PRICE	TOTAL AMOUNT
				IN FIGURES	DOLLARS
				DOLLARS	DOLLARS
117	LX-130	5 EACH	RWIS IN-PAVEMENT SENSOR INSTALLATION		
			AT		
				PER EACH	
118	LX-130	2 EACH	RWIS RUNWAY PROCESSING UNIT (RPU)		
			AT		
				PER EACH	
119	LX-130	2 EACH	REMOVAL OF EXISITNG RWIS RUNWAY PROCESSING UNIT (RPU) AND ALL APPURTENANCES		
			AT		
				PER EACH	
120	LX-130	730 LF	TYPE IIA RWIS SENSOR CABLE		
			AT		
				PER LINEAR FOOT	

TOTAL PRICE (BASE BID): \$ _____
 (AMOUNT IN FIGURES)

 (AMOUNT IN WORDS)

NOTES:

1. **In the event of a bidder's mathematical error in tabulating any bid prices, the written unit price shall govern.**
2. **The Base Bid shall be used to determine the apparent lowest responsible bidder. Following the establishment of the lowest responsible bidder and prior to award of the contract, the award of any of the Add-Ons or combination of Add-Ons shall be at the sole discretion of the owner based on available funding.**
3. **The Contract award is subject to receipt of Federal Aviation Administration (FAA) grant funding.**

RHODE ISLAND AIRPORT CORPORATION
 RUNWAY 5-23 REHABILITATION
 RHODE ISLAND T. F. GREEN INTERNATIONAL AIRPORT
 WARWICK, RHODE ISLAND
 RIAC CONSTRUCTION CONTRACT NO. 35821
 SCHEDULE OF PRICES - ADDENDUM NO. 4

ADD ON NO. 1

ITEM NO.	FAA SPEC NO.	QUANTITY	ITEM LIST		UNIT PRICE	TOTAL AMOUNT
			ITEM DESCRIPTION (PRICE WRITTEN IN WORD)		IN FIGURES	
					DOLLARS	DOLLARS
1	C-105	1 LS	MOBILIZATION (6% MAX.)			
			AT	PER LUMP SUM		
2	DX-703	180 LF	INSTALL CURED-IN-PLACE-PIPE IN EXISTING DRAIN PIPE (12-INCH DIAMETER)			
			AT	PER LINEAR FOOT		
3	DX-703	310 LF	INSTALL CURED-IN-PLACE-PIPE IN EXISTING DRAIN PIPE (18-INCH DIAMETER)			
			AT	PER LINEAR FOOT		
4	DX-703	730 LF	INSTALL CURED-IN-PLACE-PIPE IN EXISTING DRAIN PIPE (24-INCH DIAMETER)			
			AT	PER LINEAR FOOT		
5	DX-703	470 LF	INSTALL CURED-IN-PLACE-PIPE IN EXISTING DRAIN PIPE (30-INCH DIAMETER)			
			AT	PER LINEAR FOOT		
6	DX-703	960 LF	INSTALL CURED-IN-PLACE-PIPE IN EXISTING DRAIN PIPE (36-INCH DIAMETER)			
			AT	PER LINEAR FOOT		

RHODE ISLAND AIRPORT CORPORATION
 RUNWAY 5-23 REHABILITATION
 RHODE ISLAND T. F. GREEN INTERNATIONAL AIRPORT
 WARWICK, RHODE ISLAND
 RIAC CONSTRUCTION CONTRACT NO. 35821
 SCHEDULE OF PRICES - ADDENDUM NO. 4

ADD ON NO. 1

ITEM NO.	FAA SPEC NO.	QUANTITY	ITEM LIST ITEM DESCRIPTION (PRICE WRITTEN IN WORD)	UNIT PRICE IN FIGURES	TOTAL AMOUNT
				DOLLARS	DOLLARS
7	DX-753	205 VF	MANHOLE REHABILITATION		
			AT PER VERTICAL FOOT		

TOTAL PRICE (ADD ON NO. 1):
\$ _____
(AMOUNT IN FIGURES)

(AMOUNT IN WORDS)

NOTES:

1. In the event of a bidder's mathematical error in tabulating any bid prices, the written unit price shall govern.
2. The Base Bid shall be used to determine the apparent lowest responsible bidder. Following the establishment of the lowest responsible bidder and prior to award of the contract, the award of any of the Add-Ons or combination of Add-Ons shall be at the sole discretion of the owner based on available funding.
3. The Contract award is subject to receipt of Federal Aviation Administration (FAA) grant funding.

RHODE ISLAND AIRPORT CORPORATION
 RUNWAY 5-23 REHABILITATION
 RHODE ISLAND T. F. GREEN INTERNATIONAL AIRPORT
 WARWICK, RHODE ISLAND
 RIAC CONSTRUCTION CONTRACT NO. 35821
 SCHEDULE OF PRICES - ADDENDUM NO. 4

ADD ON NO. 2

ITEM NO.	FAA SPEC NO.	QUANTITY	ITEM LIST ITEM DESCRIPTION (PRICE WRITTEN IN WORD)	UNIT PRICE IN FIGURES	TOTAL AMOUNT
				DOLLARS	DOLLARS
1	P-101	210,700 SY	PRICE ADJUSTEMENT FOR DISPOSAL OF ASPHALT MILLINGS OFF-SITE AT <div style="text-align: right;">PER SQUARE YARD</div>		

TOTAL PRICE (ADD ON NO. 2):	\$	
		(AMOUNT IN FIGURES)
		(AMOUNT IN WORDS)

NOTES:

1. In the event of a bidder's mathematical error in tabulating any bid prices, the written unit price shall govern.
2. The Base Bid shall be used to determine the apparent lowest responsible bidder. Following the establishment of the lowest responsible bidder and prior to award of the contract, the award of any of the Add-Ons or combination of Add-Ons shall be at the sole discretion of the owner based on available funding.
3. The Contract award is subject to receipt of Federal Aviation Administration (FAA) grant funding.

RHODE ISLAND AIRPORT CORPORATION
 RUNWAY 5-23 REHABILITATION
 RHODE ISLAND T. F. GREEN INTERNATIONAL AIRPORT
 WARWICK, RHODE ISLAND
 RIAC CONSTRUCTION CONTRACT NO. 35821
 SCHEDULE OF PRICES - ADDENDUM NO. 4

ADD ON NO. 3

ITEM NO.	FAA SPEC NO.	QUANTITY	ITEM LIST		UNIT PRICE	TOTAL AMOUNT
			ITEM DESCRIPTION (PRICE WRITTEN IN WORD)		IN FIGURES	
					DOLLARS	DOLLARS
1	C-102	1,800 LF	INSTALLATION AND REMOVAL OF COMPOST FILTER SOCK			
			AT			
			PER LUMP SUM			
2	CX-106	1 LS	SAFETY, SECURITY AND MAINTENANCE OF TRAFFIC			
			AT			
			PER LINEAR FOOT			
3	P-101	40,000 SY	PLACEMENT OF ASPHALT MILLINGS			
			AT			
			PER SQUARE YARD			
4	P-151	1 LS	CLEARING AND GRUBBING			
			AT			
			PER LUMP SUM			
5	T-905	2,500 CY	TOPSOIL (OBTAINED ON-SITE OR REMOVED FROM STOCKPILE)			
			AT			
			PER CUBIC YARD			

LIQUIDATED DAMAGES: Upon execution of the contract, the Contractor shall proceed with the preparation and submittal of shop drawings and his tentative construction schedule and with subsequent ordering and fabricating of materials. The Owner will issue a written “Notice-to-Proceed (NTP)” which will specify an effective date for the Contractor to begin work at the site. See Section 80-02 for more information on the NTP and Section 80-08 for the Contract Duration.

Should work continue beyond time specified above, and no time extension has been granted via the Change Order process, then liquidate damages will be assessed to the Contractor for each and every calendar day the work remains uncompleted.

Liquidated damages for this project shall as indicated in Section 80-08 for Contractor’s failure to complete any work area within the duration stipulated in Section 80-08.

The undersigned affirms that in making such bid, neither he or she nor any company that they may represent, nor anyone in behalf of him or her or their company, directly or indirectly, has entered into any combination, collusion, undertaking or agreement with any other bidder or bidders to maintain the prices of said work, or any compact to prevent any other bidder or bidders from bidding on said Contract or work and further affirms that such bid is made without regard or reference to any other bidder or proposer and without any agreement or understanding or combination either directly or indirectly with any other person or persons with reference to such bidding in any way or manner whatsoever.

The undersigned further agrees that if awarded the Contract he or she will commence the work within ten (10) calendar days after the date of the Notice to Proceed and that he or she will complete the work in accordance with the Summary Schedule and Key Milestones and Substantial Completion date set forth in the Bidding and Contract Documents or such amended date as may be granted. If the undersigned fails to complete the work as provided in the aforementioned schedule, then and in that event, he or she further expressly agrees that, for each day that any phase of work under this Contract remains uncompleted thereafter the Owner may deduct from the Contract price herein specified the stipulated sum of liquidated damages as provided in the Special Provisions and retain that sum for failure of the undersigned to complete this Contract on or before the expiration of the period shown in the completion schedule.

In submitting this bid, it is understood that the right is reserved by the Owner to the fullest extent permitted by law to waive any informality or irregularity in any bid or bid guaranty, to reject any and all bids, to re-bid, to award or refrain from awarding a contract for the work and to negotiate with the apparent qualified low responsive bidder to such extent as may be beneficial to the Owner in its sole discretion.

The undersigned attaches hereto a cashier’s check, certified check or Bid Bond in the sum of _____ Dollars (\$ _____), payable to the Rhode Island Airport Corporation, as required in the Information for Bidders, and the undersigned agrees that in case he or she fails within five (5) calendar days after Notice of Intent to Award the Contract to him or her, to enter into a Contract Agreement in writing and furnish the required Payment and Performance Bonds, with surety or sureties to be approved by Owner, and insurance policies or endorsements, the Owner may, as its option, determine that the undersigned has abandoned his rights and interest in such bid and that the cashier’s check, certified check, or Bid Bond accompanying his or her bid has been forfeited. Otherwise, the cashier’s check, certified check, or Bid Bond shall be returned to the undersigned upon the execution of the Contract and acceptance of the bonds and insurance, or upon rejection of his or her bid.

A bid shall be considered unresponsive and shall be rejected if it fails to include fully executed statements or if the Bidder fails to furnish required data. When a determination has been made to award the Contract to a specific Contractor, such Contractor shall, prior to award, furnish such other pertinent information regarding his or her own employment policies and practices as well as those of his or her proposed Subcontractors as the Owner may require.

The bidder shall furnish similar statements executed by each of his or her first-tier and second-tier Subcontractors whose contracts equal Ten Thousand Dollars (\$10,000.00) or more and shall obtain similar compliance by such Subcontractors before awarding such Subcontractors. No subcontract shall be awarded to any non-complying Subcontractor.

The undersigned affirms that he or she has completed all of the blank spaces in the “Bid Form”, with an amount in words and numbers and agrees that where a discrepancy occurs between the prices quoted in words and/or in numbers the lowest figure quoted shall take precedence and govern when determining final costs or award of Contract.

The undersigned affirms that wages not less than the minimum rates or wages, as predetermined for this project by the State of Rhode Island were used in the preparation of this “Bid Form”.

SIGNATURE OF BIDDER

* Signed _____
By: _____
Title: _____
Date: _____

This proposal includes Addendum Numbers(s): _____
(Fill in numbers(s) if Addendum(s) are issued)

Address of permanent place of business to which Notice-to-Proceed should be sent:

Email Address: _____

*Important: Execute acknowledgment of officer or agent who signs this document (use proper form below):

ACKNOWLEDGMENT OF PRINCIPAL, IF A CORPORATION:

State of: (_____)

County of: (_____)§

On this _____ day of _____, 20____, before me personally came and appeared _____ to me Known, who, being by me duly sworn, did depose and say to me that he/she resides at _____, _____ that he/she is the _____ of _____ the corporation described in and which executed the foregoing instrument, and that he/she/they know(s) the seal of said corporation; that the seal affixed to said instrument is an impression of such seal; that it was so affixed by the order of the directors of said corporation, and that he signed his name thereto by like order.

(Seal) _____
Notary Public

ACKNOWLEDGMENT OF PRINCIPAL, IF A PARTNERSHIP:

State of (_____)

County of (_____)§

On this _____ day of _____, 20____, before me personally came and appeared _____ to me known and known to me to described in and who executed the foregoing instrument and he/she acknowledged to me that he/she executed the same as and for the act and deed of said firm.

(Seal) _____
Notary Public

ACKNOWLEDGMENT OF PRINCIPAL, IF AN INDIVIDUAL:

State of (_____)

County of (_____)§

On this _____ day of _____ 20____, before me
personally came and appeared _____ to me known and known to me
to be the person described in and who executed the forgoing instrument and acknowledged that
he/she executed the same.

(Seal) _____
Notary Public

**ANTI-COLLUSION CERTIFICATE FOR CONTRACT AND FORCE ACCOUNT
(SWORN AFFIDAVIT)**

Title 23, United States Code, Section 112(c), requires, as a condition precedent to approval by the Rhode Island Airport Corporation (RIAC) of the contract for this work, that there be filed a sworn statement executed by, on behalf of, the person, firm, association, or corporation to whom such contract is to be awarded, certifying that such person, firm, association, or corporation has not, either directly or indirectly, entered into any agreement, participated in any collusion, or otherwise taken any action in restraint of free competitive bidding in connection with such contract. This sworn statement shall be in the form of an affidavit executed and sworn to be the successful bidder before a person who is authorized by the Laws of this State to administer oaths.

The person, firm, association, or corporation submitting the bid (under 23 U.S.C. 112(c)) has the option to sign either:

- a. the sworn affidavit executed and sworn to by the bidder before a person who is authorized by the laws of the State to administer oaths; or
- b. the unsworn declaration executed under penalty of perjury under the laws of the United States (as allowed by 28 U.S.C. 1746).

A bidder will not be considered for award of contract under this invitation for bids unless such bidder completes either the unsworn declaration (as stated on the following page) or the sworn affidavit as prescribed below:

PLEASE NOTE: CONTRACTOR TO COMPLETE ONLY ONE (1) CERTIFICATION STATEMENT. DO NOT SIGN BOTH STATEMENTS.

**ANTI-COLLUSION CERTIFICATE FOR CONTRACT AND FORCE ACCOUNT
(SWORN AFFIDAVIT)**

To the: RHODE ISLAND AIRPORT CORPORATION

State of _____

County of _____ §

I, _____ (name of party signing affidavit)

_____ (title), being duly sworn, do

depose and say: on behalf of _____ that said Contractor has not, either directly or indirectly, entered into any agreement, participated in collusion, or otherwise taken any action in restraint of free competitive bidding in connection with Rhode Island Airport Corporation Construction Contract Number 35821

County of _____

Town/City _____

Contractor

Signature

Sworn to before me this _____ day of _____ 20____

My commission expires _____

Signature and Seal of Notary Public

**ANTI-COLLUSION CERTIFICATE FOR CONTRACT AND FORCE ACCOUNT
(UNSWORN AFFIDAVIT)**

Title 23, United States Code, Section 112(c), requires, as a condition precedent to approval by the Rhode Island Airport Corporation (RIAC) of the contract for this work, that there be filed a unsworn declaration executed by, on behalf of, the person, firm, association, or corporation submitting the bid, certifying that such person, firm, association, or corporation has not, either directly or indirectly, entered into any agreement, participated in any collusion, or otherwise taken any action in restraint of free competitive bidding in connection with submitted bid. This unsworn statement shall be in the form of a declaration executed under penalty of perjury under the laws of the United States.

The person, firm, association, or corporation submitting the bid (under 23 U.S.C. 112(c)) has the option to sign either:

- a. the sworn affidavit executed and sworn to by the bidder before a person who is authorized by the laws of the State to administer oaths; or
- b. the unsworn declaration executed under penalty of perjury under the laws of the United States (as allowed by 28 U.S.C. 1746).

A bidder will not be considered for award of contract under this invitation for bids unless such bidder completes either the sworn affidavit (as stated on the previous page) or the unsworn declaration as prescribed below:

**ANTI-COLLUSION CERTIFICATE FOR CONTRACT AND FORCE ACCOUNT
(UNSWORN AFFIDAVIT)**

To the: RHODE ISLAND AIRPORT CORPORATION

State of _____

County of _____ §

I, _____ (name of party signing affidavit)

_____ (title), under penalty of perjury

under the laws of the United States, do depose and say: on behalf of _____
that said Contractor has not, either directly or indirectly, entered into any agreement, participated in
collusion, or otherwise taken any action in restraint of free competitive bidding in connection with Rhode
Island Airport Corporation Construction Contract Number 35821

County of _____

Town/City _____

Contractor

Signature

Sworn to before me this _____ day of _____ 20 _____

My commission expires _____

Signature and Seal of Notary Public

DISCLOSURE OF LOBBYING ACTIVITIES

Complete this form to disclose lobbying activities pursuant to 31 U.S.C. 1352

1. Type of Federal Action: a. contract b. grant c. cooperative agreement d. loan e. loan guarantee f. loan insurance	2. Status of Federal Action a. bid/offer/application b. initial award c. post-award	3. Report Type a. initial filing b. material change For Material Change Only: Year _____ Quarter _____ Date of last report _____
4. Name and Address of Reporting Entity:	5. If Reporting Entity in No. 4 is Subawardee, Enter Name and address of Prime:	
6. Federal Department Agency:	7. Federal Program Name/Description: <i>CFDA Number, if applicable:</i>	
8. Federal Action Number, if known:	9. Award Amount, if known: \$	
10a. Name and Address of Lobbying Entity, (if individual, last name, first name, MI)	10b. Individuals performing Services (including address if different from No. 10a.), (if individual, last name, first name, MI)	
11. Amount of Payment (check all that apply): \$ _____ actual planned	13. Type of Payment (check all that apply) a. retainer b. one-time fee c. commission d. contingent fee e. deferred f. other specify _____	
12. Form of Payment (check all that apply): a. cash b. In-kind; specify; nature _____ value _____		
14. Brief Description of services performed or performed and date(s) of Service, including officer(s), employer(s), or member(s) contacted for payment indicated in Item 11.		
15. Continuation Sheet(s) SF-LLL-A attached: Yes No		
16. Information requested through this form is authorized by Title 31 U.S.C. Section 1362. This disclosure of lobbying activities is a material representation of fact upon which reliance was placed by the tier above when this transaction was made or entered into. This disclosure is required pursuant to 31 U.S.C. 1352. This information will be reported to Congress semi-annually and will be available for public inspection. Any person who fails to file the required disclosure shall be subject to a civil penalty of not less than \$10,000 and not more than \$100,000 for each failure	Signature: _____ Print Name: _____ Title: _____ Telephone No. _____ Date: _____	

Authorized for Local Reproduction Standard Form - LLL

**CERTIFICATION REGARDING DEBARMENT, SUSPENSION,
AND OTHER RESPONSIBILITY MATTERS
PRIMARY COVERED TRANSACTION**

In accordance with the Code of Federal Regulations, part 49, CFR Section 29.510, the prospective primary participant _____ (Name of Authorized Agent), _____ (Title), being duly sworn (or under penalty of perjury under the laws of the United States), certifies to the best of his / her knowledge and belief, that it's principals:

- a. Are not presently debarred, suspended, proposed for debarment, declared ineligible, or voluntarily excluded from covered transactions by any federal department or agency;
- b. Have not within a three-year period preceding this proposal been convicted of or had a civil judgment rendered against them for commission of fraud or a criminal offence in connection with obtaining, attempting to obtain, or performing a public (federal, state, or local) transaction or contract under a public transaction; violation of federal or state antitrust statutes or commission of embezzlement, theft, forgery, bribery, falsification or destruction or records, making false statements, or receiving stolen property;
- c. Are not presently indicted for or otherwise criminally or civilly charged by a governmental entity (federal, state, or local) with commission of any of the offenses enumerated in paragraph (1) (b) of this certification?
- d. Have not within a three-year period preceding this application / proposal had one or more public transactions (federal, state, or local) terminated for cause of default.

Where the prospective primary participant is unable to certify to any of the statements in this certification, such prospective participant shall list exceptions below.

Exceptions will not necessarily result in denial or award, but will be considered in determining contractor responsibility. For any exception note, indicate below to whom it applies, the initiating agency, and the dates of the action. Providing false information may result in criminal prosecution or administrative sanction. If an exception is noted, the contractor must contact the Corporation to discuss the exception prior to award of the contract.

Signature of Authorized Agent

Date

REQUIREMENT FOR CERTIFICATION FOR NONSEGREGATED FACILITIES:

A certification of Nonsegregated Facilities must be submitted at the time of the bid opening of a contract or subcontract exceeding Ten Thousand Dollars (\$10,000), which is not exempt from the provisions of the Equal Opportunity Clause.

Certification – The information above is true and complete to the best of my knowledge and belief.

Name and Title of Signer (*please type*)

Signature

Date

Note: The penalty for making false statements in offers is prescribed in 18 U.S.C. 1001

DBE LETTER OF INTENT FORM

(Submit one form for each DBE subcontractor, supplier or manufacturer.)

Project Name/Location: Runway 5-23 Rehabilitation / Rhode Island T. F. Green International Airport

Name of Bidder's Firm: _____

Street Address: _____

City: _____ State: _____ Zip: _____

Name of DBE firm: _____

Street Address: _____

City: _____ State: _____ Zip: _____

Contact Person: _____ Email: _____

Certifying Agency: _____

(DBE firm shall submit evidence, such as a photocopy, of their certification status)

- Classification: Prime Contractor Subcontractor Joint Venture
- Supplier / Dealer Supplier / Distributor Manufacturer

Disadvantaged Group (check one):

Black American <input type="checkbox"/>	Hispanic American <input type="checkbox"/>	Native American <input type="checkbox"/>	Subcont. Asian American <input type="checkbox"/>
Male <input type="checkbox"/>	Male <input type="checkbox"/>	Male <input type="checkbox"/>	Male <input type="checkbox"/>
Female <input type="checkbox"/>	Female <input type="checkbox"/>	Female <input type="checkbox"/>	Female <input type="checkbox"/>
Asian Pacific American <input type="checkbox"/>	Non-Minority <input type="checkbox"/>	Other (not of any group listed here) <input type="checkbox"/>	
Male <input type="checkbox"/>	Male <input type="checkbox"/>	Male <input type="checkbox"/>	
Female <input type="checkbox"/>	Female <input type="checkbox"/>	Female <input type="checkbox"/>	

SUMMARY OF WORK ITEMS

NAICS	Description of Work Item	Dollar amount	Manufacturer/Regular Dealer / Distributor / Broker**

**Percentage is to be used only in negotiated procurements*

***For DBE suppliers only, state how the DBE will perform. For dealer/distributor/broker, Form 3 must be included*

The undersigned bidder/offeror is committed to utilizing the above-named DBE firm for the work described above. The total expected dollar value of this work is \$ _____. The bidder/offeror understands that if it is awarded the contract/agreement resulting from this procurement, it **must** enter a subcontract with the DBE firm identified above that is representative of the type and amount of work listed. Bidder/offeror understands that upon submitting this form with its bid/offer, it may not substitute for or terminate the DBE listed above without following the procedures of 49 CFR Part 26, §26.53. **A termination includes any reduction or underrun in work listed for a DBE not caused by a material change to the prime contract by the recipient**

 Signature of Bidder/Offeror's Authorized Representative Date: _____

The undersigned DBE affirms that it is ready, willing, and able to perform the amount and type of work as described above, and is properly certified to be counted for DBE participation, therefore.

 Signature of DBE's Authorized Representative Date: _____

If the bidder/offeror does not receive award of the prime contract, all representations in this Letter of Intent shall be null and void. Submit this page for each DBE subcontractor/DBE Supplier.



DBE Regular Dealer/Distributor Affirmation Form

Bidder Name:

Contract Name/Number:

Sections 26.53(c)(1) of Title 49 Code of Federal Regulations requires recipients to make a preliminary counting determination for each DBE listed as a regular dealer or distributor to assess its eligibility for 60 or 40 percent credit, respectively, of the cost of materials and supplies based on its demonstrated capacity and intent to perform as a regular dealer or distributor...

DBE Name: Total Subcontract/Purchase Order Amount: Authorized DBE Representative (Name and Title): NAICS Code(s) Related to the Items to be Sold/Leased:

Will all items sold or leased be provided from the on-hand inventory at your establishment? YES NO (If "YES," you have indicated that your performance will satisfy the regular dealer requirements and may be counted at 60%. STOP here. Read and sign the affirmation below. If "NO" Continue.)

a) Are you selling bulk items (e.g., petroleum products, steel, concrete, concrete products, sand, gravel, asphalt, etc.) or items not typically stocked due to their unique characteristics (aka specialty items)? YES NO (If "YES," Go to Question 2. If "NO" Continue.)

b) Will at least 51% of the items you are selling be provided from the inventory maintained at your establishment, and will the minor quantities of items delivered from and by other sources be of the general character as those provided from your inventory? YES NO* (If "YES," you have indicated that your performance will satisfy the regular dealer requirements and may be counted at 60%. STOP here. Read and sign the affirmation below.)

*If 1., 1.a), and 1. b) above are "NO," your performance on the whole will not satisfy the regular dealer requirements; therefore, only the value of items to be sold or leased from inventory can be counted at 60%. (Go to Question 3. to determine if the items delivered from and by other sources are eligible for Distributor credit.)

2. Will you deliver all bulk or specialty items using distribution equipment you own (or under a long-term lease) and operate? YES NO (If "YES," you have indicated that your performance will satisfy the requirements for a regular dealer of bulk items and may be counted at 60%. STOP here. Read and sign the affirmation below.)

1 If "NO," your performance will not satisfy the requirements for a regular dealer of bulk items; the value of items to be sold or leased cannot be counted at 60%. (Go to Question 3.)

3. Will the written terms of your purchase order or bill of lading from a third party transfer responsibility, including risk for loss or damage, to your company at the point of origin (e.g. a manufacture's facility)? YES2 NO3

a) Will you be using sources other than the manufacturer (or other seller) to deliver or arrange delivery of the items sold or leased? YES2 NO3

2 If your responses to 3 and 3.a) are "YES," you have indicated that your performance will satisfy the requirements of a distributor; therefore, the value of items sold or leased may be counted at 40%.

3 If you responded "NO" to either 3 or 3.a), counting of your participation is limited to the reasonable cost of fees or commissions charged, including transportation charges for the delivery of materials or supplies; the cost of materials or supplies may not be counted.

I affirm that the information that I provided above is true and correct and that my company's subsequent performance of a commercially useful function will be consistent with the above responses. I further affirm that my company will independently negotiate price, order specified quantities, and pay for the items listed in the bidder's commitment. This includes my company's responsibility for the quality of such items in terms of necessary repairs, exchanges, or processing of any warranty claims for damaged or defective materials.

Printed Name and Signature of DBE Owner/Authorized Representative:

The bidder acknowledges its responsibility for verifying the information provided by the DBE named above and ensuring that the counting of the DBE's participation is accurate. Any shortfall caused by errors in counting are the responsibility of the bidder.

Printed Name and Signature of Bidder's Authorized Representative:

Bidder's List Collection Form

The sponsor is required by CFR Title 49, Subtitle A, Part 26, subpart A, § 26.11(c) to collect bidders list information from all bidders at the time of bid submittal. The data must be collected for all firms who bid as prime contractors or subcontractors (successfully or not).

As such, it is the responsibility of the bidder to complete the following information as a condition of submitting a proposal for this project. The sponsor will consider incomplete information to be an irregular proposal.

Airport Name: _____ **Bid Date:** _____

Project Name: _____

Bidders and potential subcontractors / suppliers Information:

Firm Name	Firm Address (including ZIP code)	DBE or Non-DBE Status	NAICS Code(s) of Scope(s) Bid	Race/Gender of Majority Owner	Age of Firm	Annual Gross Receipts
				<input type="checkbox"/> Black American <input type="checkbox"/> Hispanic American <input type="checkbox"/> Asian-Pacific American <input type="checkbox"/> Subcontinent Asian American <input type="checkbox"/> Native American <input type="checkbox"/> Non-minority Woman <input type="checkbox"/> Other GENDER: <input type="checkbox"/> Female <input type="checkbox"/> Male	<input type="checkbox"/> Less than 1 year <input type="checkbox"/> 3 years <input type="checkbox"/> 4-7 years <input type="checkbox"/> 8-10 years <input type="checkbox"/> More than 10 years	<input type="checkbox"/> Less than \$1 million <input type="checkbox"/> \$1-3 million <input type="checkbox"/> \$3-6 million <input type="checkbox"/> \$6-10 million <input type="checkbox"/> Over \$10 million
				<input type="checkbox"/> Black American <input type="checkbox"/> Hispanic American <input type="checkbox"/> Asian-Pacific American <input type="checkbox"/> Subcontinent Asian American <input type="checkbox"/> Native American <input type="checkbox"/> Non-minority Woman <input type="checkbox"/> Other GENDER: <input type="checkbox"/> Female <input type="checkbox"/> Male	<input type="checkbox"/> Less than 1 year <input type="checkbox"/> 3 years <input type="checkbox"/> 4-7 years <input type="checkbox"/> 8-10 years <input type="checkbox"/> More than 10 years	<input type="checkbox"/> Less than \$1 million <input type="checkbox"/> \$1-3 million <input type="checkbox"/> \$3-6 million <input type="checkbox"/> \$6-10 million <input type="checkbox"/> Over \$10 million

				<input type="checkbox"/> Black American <input type="checkbox"/> Hispanic American <input type="checkbox"/> Asian-Pacific American <input type="checkbox"/> Subcontinent Asian American <input type="checkbox"/> Native American <input type="checkbox"/> Non-minority Woman <input type="checkbox"/> Other GENDER: <input type="checkbox"/> Female <input type="checkbox"/> Male	<input type="checkbox"/> Less than 1 year <input type="checkbox"/> 3 years <input type="checkbox"/> 4-7 years <input type="checkbox"/> 8-10 years <input type="checkbox"/> More than 10 years	<input type="checkbox"/> Less than \$1 million <input type="checkbox"/> \$1-3 million <input type="checkbox"/> \$3-6 million <input type="checkbox"/> \$6-10 million <input type="checkbox"/> Over \$10 million
				<input type="checkbox"/> Black American <input type="checkbox"/> Hispanic American <input type="checkbox"/> Asian-Pacific American <input type="checkbox"/> Subcontinent Asian American <input type="checkbox"/> Native American <input type="checkbox"/> Non-minority Woman <input type="checkbox"/> Other GENDER: <input type="checkbox"/> Female <input type="checkbox"/> Male	<input type="checkbox"/> Less than 1 year <input type="checkbox"/> 3 years <input type="checkbox"/> 4-7 years <input type="checkbox"/> 8-10 years <input type="checkbox"/> More than 10 years	<input type="checkbox"/> Less than \$1 million <input type="checkbox"/> \$1-3 million <input type="checkbox"/> \$3-6 million <input type="checkbox"/> \$6-10 million <input type="checkbox"/> Over \$10 million
				<input type="checkbox"/> Black American <input type="checkbox"/> Hispanic American <input type="checkbox"/> Asian-Pacific American <input type="checkbox"/> Subcontinent Asian American <input type="checkbox"/> Native American <input type="checkbox"/> Non-minority Woman <input type="checkbox"/> Other GENDER: <input type="checkbox"/> Female <input type="checkbox"/> Male	<input type="checkbox"/> Less than 1 year <input type="checkbox"/> 3 years <input type="checkbox"/> 4-7 years <input type="checkbox"/> 8-10 years <input type="checkbox"/> More than 10 years	<input type="checkbox"/> Less than \$1 million <input type="checkbox"/> \$1-3 million <input type="checkbox"/> \$3-6 million <input type="checkbox"/> \$6-10 million <input type="checkbox"/> Over \$10 million

If additional space is needed, copy this form and submit with your original proposal. **This form must list all firms that supplied a quote (successful or not) and submitted with the proposal.**

DBE WAIVER FORM

(Required for All Bids Requesting Waiver of the use of DBE's Stated in Section 00750)

I, _____, _____, of _____
(Name) (Address) (Company)

certify that on _____, I contacted the following DBE Contractors to obtain a bid for work
(date)

items to be performed on Contract Number 35821

DBE Contractor Name and Address Work Items Sought

DBE Contractor Name and Address	Work Items Sought
_____	_____
_____	_____
_____	_____

To the best of my knowledge and belief, said DBE Contractor was unavailable (exclusive of unavailability due to lack of agreement on price) for work on this project, or unable to prepare a bid for the following reason(s):

Signature: _____

Date: _____

This portion to be completed by DBE Contractor:

_____ was offered an opportunity to bid or make an offer on the above
(Name of DBE)

identified work on _____ by _____
(Date) (Source)

The above statement is a true and accurate account of why I did not submit an offer/bid on this project.

Signature: _____

Title: _____

CONTRACTOR QUALIFICATION FORM

Instructions:

Elaboration of the following required information is necessary to ascertain your firm’s capabilities to effectively execute the Project. Pursuant to the Information to Bidders of Section 1, your completion of this Contractor Qualification Form is MANDATORY and will be utilized by RIAC as a basis for determining the qualified lowest bid, and subsequent award.

PLEASE ATTACH TO THIS FORM A COPY OF YOUR CERTIFICATE OF INSURANCE INDICATING CURRENT LIMITS.

Firm: _____	President: _____
Address: _____	Phone: _____
_____	Fax: _____
Federal ID#: _____ Contact: _____	Former Company Name: _____
Years performing work specialty: _____	Work Now Under Contract: \$ _____
Bank Reference: _____	Work in Place Last Year: \$ _____
Address: _____	Average Annual Sales Last 3 Years.: \$ _____
_____	Value Of Capital Equipment Owned:\$ _____
Bonding Company: _____	Bonding Agent: _____
Total Bonding Capacity: \$ _____	Address: _____
Work Currently Bonded: \$ _____	_____
Work Now Under Contract: \$ _____	_____
Bonding Companies Best Rating: _____	Bonding Agent’s Phone: _____
Is Firm In Compliance with all EEO Requirements? Y N	Has Firm Ever Failed To Complete A Contract?: Y N
Has Firm Ever Been Involved In Bankruptcy Or Re-organization? Y N	Are There Any Claims Against The Firms?: Y N
Are There Any Pending Judgments Against The Firm?: Y N	

(IF THE ANSWER IS YES TO ANY OF THE ABOVE PLEASE DESCRIBE ON A SEPARATE SHEET)

Insurance: (“CLAIMS-MADE” GENERAL LIABILITY IS UNACCEPTABLE)

Submit Sample Certificate Of Insurance Showing Coverage And Limits For General Liability, Automobile Liability, Excess Umbrella Liability, And Worker’s Compensation.

Experience Modification Rating: _____ Agency’s Name: _____

Contact’s Name: _____ Contact’s Phone: _____

Safety:

Attach Log And Summary Of OSHA violations and any fines or settlements for the past 36 months

Attach Log And Summary Of Occupational Injuries And Illnesses As Required By the U.S. Dept. Of Labor For The Past 36 Months (OSHA Form No. 200)

OSHA Recordable Incident Rate (Current Year): _____ OSHA Lost Days Away Incident Rate (Current Year): _____

List Four (4) Or More Most Significant Projects Completed Within The Last Five (5) Years:
 Refer to Section 00100, paragraph XI.

Project & Location	Engineer	Contract With	Contract Amount	Date Completed	Reference Contact & Phone Number

PLEASE ATTACH ADDITIONAL SHEETS IF NECESSARY

Please list **key personnel** available for project and describe responsibilities of each:

Total Firm Staff Employed for this project: _____ Total Staff Employed Firm-wide: _____

Please list **key equipment** available for project and whether Firm owns or leases equipment:

List Three (3) Or More Most Significant Projects Currently Under Construction:

Refer to Section 00100, paragraph XI

Project & Location	Engineer	Contract With	Contract Amount	Date Completed	Reference Contact & Phone Number

PLEASE ATTACH ADDITIONAL SHEETS IF NECESSARY

THE APPARENT LOW BIDDER SHALL PROVIDE A COPY OF HIS/HER COMPANY'S FINANCIAL STATEMENT, CERTIFIED BY CERTIFIED PUBLIC ACCOUNTANT, WITHIN 5 DAYS OF REQUEST BY RIAC.

THE APPARENT LOW BIDDER SHALL PROVIDE A COPY OF HIS/HER COMPANY'S CONTRACTOR QUALIFICATION FORM TO RIAC, IF REQUESTED, WITHIN 5 DAYS OF BID OPENING.

This Form **MUST** Be Signed By An Officer Of The Firm Or An Individual So Authorized By An Officer Of The Firm.

Signature: _____

Name: _____

Title: _____

CERTIFICATION OF COMPLIANCE WITH FEDERALLY REQUIRED CONTRACT REQUIREMENTS

The bidder/offeror certifies, by submission of this proposal or acceptance of this, that he/she has read the federally mandated contract requirements as listed in Section 00950, Federal Contract Conditions and Section 00960, Executive Orders and that compliance with said references will be incorporated into the terms of the Contract documents.

I hereby certify that I have read and will comply with all of the above requirements.

Signature of Authorized Contractor and/or Consultant Representative

Date

Certification of Compliance with FAA Buy American Preference – Construction Projects

As a matter of bid responsiveness, the bidder or offeror must complete, sign, date, and submit this certification statement with its proposal. The bidder or offeror must indicate how it intends to comply with 49 USC § 50101, BABA and other related Made in America Laws, U.S. statutes, guidance, and FAA policies, by selecting one of the following certification statements. These statements are mutually exclusive. Bidder must select one or the other (i.e., not both) by inserting a checkmark (✓) or the letter “X”.

- Bidder or offeror hereby certifies that it will comply with 49 USC § 50101, BABA and other related U.S. statutes, guidance, and policies of the FAA by:
- a) Only installing iron, steel and manufactured products produced in the United States;
 - b) Only installing construction materials defined as: an article, material, or supply – other than an item of primarily iron or steel; a manufactured product; cement and cementitious materials; aggregates such as stone, sand, or gravel; or aggregate binding agents or additives that are or consist primarily of non-ferrous metals; plastic and polymer-based products (including polyvinylchloride, composite building materials, and polymers used in fiber optic cables); glass (including optic glass); lumber or drywall that have been manufactured in the United States.
 - c) Installing manufactured products for which the Federal Aviation Administration (FAA) has issued a waiver as indicated by inclusion on the current FAA Nationwide Buy American Waivers Issued listing; or
 - d) Installing products listed as an Excepted Article, Material or Supply in Federal Acquisition Regulation Subpart 25.108.

By selecting this certification statement, the bidder or offeror agrees:

- a) To provide to the Airport Sponsor or the FAA evidence that documents the source and origin of the iron, steel, and/or manufactured product.
 - b) To faithfully comply with providing U.S. domestic products.
 - c) To refrain from seeking a waiver request after establishment of the contract, unless extenuating circumstances emerge that the FAA determines justified.
 - d) Certify that all construction materials used in the project are manufactured in the U.S.
- The bidder or offeror hereby certifies it cannot comply with the 100 percent Buy American Preferences of 49 USC § 50101(a) but may qualify for a Type 3 or Type 4 waiver under 49 USC § 50101(b). By selecting this certification statement, the apparent bidder or offeror with the apparent low bid agrees:
- a) To submit to the Airport Sponsor or FAA within 15 calendar days of being selected as the responsive bidder, a formal waiver request and required documentation that supports the type of waiver being requested.
 - b) That failure to submit the required documentation within the specified timeframe is cause for a non-responsive determination that may result in rejection of the proposal.
 - c) To faithfully comply with providing U.S. domestic products at or above the approved U.S. domestic content percentage as approved by the FAA.
 - d) To furnish U.S. domestic product for any waiver request that the FAA rejects.
 - e) To refrain from seeking a waiver request after establishment of the contract, unless extenuating circumstances emerge that the FAA determines justified.

Required Documentation

Type 2 Waiver (Nonavailability) - The iron, steel, manufactured goods or construction materials or manufactured goods are not available in sufficient quantity or quality in the United States. The required documentation for the Nonavailability waiver is

- a) Completed Content Percentage Worksheet and Final Assembly Questionnaire
- b) Record of thorough market research, consideration where appropriate of qualifying alternate items, products, or materials including;
- c) A description of the market research activities and methods used to identify domestically manufactured items capable of satisfying the requirement, including the timing of the research and conclusions reached on the availability of sources.

Type 3 Waiver – The cost of components and subcomponents produced in the United States is more than 60 percent of the cost of all components and subcomponents of the “facility/project.” The required documentation for a Type 3 waiver is:

- a) Completed Content Percentage Worksheet and Final Assembly Questionnaire including;
- b) Listing of all manufactured products that are not comprised of 100 percent U.S. domestic content (excludes products listed on the FAA Nationwide Buy American Waivers Issued listing and products excluded by Federal Acquisition Regulation Subpart 25.108; products of unknown origin must be considered as non-domestic products in their entirety).
- c) Cost of non-domestic components and subcomponents, excluding labor costs associated with final assembly and installation at project location.
- d) Percentage of non-domestic component and subcomponent cost as compared to total “facility” component and subcomponent costs, excluding labor costs associated with final assembly and installation at project location.

Type 4 Waiver (Unreasonable Costs) - Applying this provision for iron, steel, manufactured goods or construction materials would increase the cost of the overall project by more than 25 percent. The required documentation for this waiver is:

- a) A completed Content Percentage Worksheet and Final Assembly Questionnaire from
- b) At minimum two comparable equal bids and/or offers;
- c) Receipt or record that demonstrates that supplier scouting called for in Executive Order 14005, indicates that no domestic source exists for the project and/or component;
- d) Completed waiver applications for each comparable bid and/or offer.

False Statements: Per 49 USC § 47126, this certification concerns a matter within the jurisdiction of the Federal Aviation Administration and the making of a false, fictitious, or fraudulent certification may render the maker subject to prosecution under Title 18, United States Code.

Date

Signature

Company Name

Title

**CERTIFICATION OF OFFERER/BIDDER REGARDING TAX DELINQUENCY AND FELONY
CONVICTIONS**

The applicant must complete the following two certification statements. The applicant must indicate its current status as it relates to tax delinquency and felony conviction by inserting a checkmark (✓) in the space following the applicable response. The applicant agrees that, if awarded a contract resulting from this solicitation, it will incorporate this provision for certification in all lower tier subcontracts.

Certifications

- a) The applicant represents that it is () is not () a corporation that has any unpaid Federal tax liability that has been assessed, for which all judicial and administrative remedies have been exhausted or have lapsed, and that is not being paid in a timely manner pursuant to an agreement with the authority responsible for collecting the tax liability.
- b) The applicant represents that it is () is not () is not a corporation that was convicted of a criminal violation under any Federal law within the preceding 24 months.

Note

If an applicant responds in the affirmative to either of the above representations, the applicant is ineligible to receive an award unless the sponsor has received notification from the agency suspension and debarment official (SDO) that the SDO has considered suspension or debarment and determined that further action is not required to protect the Government’s interests. The applicant therefore must provide information to the owner about its tax liability or conviction to the Owner, who will then notify the FAA Airports District Office, which will then notify the agency’s SDO to facilitate completion of the required considerations before award decisions are made.

Term Definitions

Felony conviction: Felony conviction means a conviction within the preceding twenty four (24) months of a felony criminal violation under any Federal law and includes conviction of an offense defined in a section of the U.S. code that specifically classifies the offense as a felony and conviction of an offense that is classified as a felony under 18 U.S.C. § 3559.

Tax Delinquency: A tax delinquency is any unpaid Federal tax liability that has been assessed, for which all judicial and administrative remedies have been exhausted, or have lapsed, and that is not being paid in a timely manner pursuant to an agreement with the authority responsible for collecting the tax liability.

Date

Signature

Company Name

Title

EQUAL EMPLOYMENT OPPORTUNITY REPORT STATEMENT
As Required by 41 CFR 60-1.7(b)

The Bidder (proposer) shall complete the following statement by checking the appropriate boxes. Failure to complete these blanks may be grounds for rejection of bids.

1. The Bidder (proposer) has _____ has not _____ developed and has on file at each establishment Affirmative Action Programs pursuant to 41 CFR 60-1.4 and 41 CFR.
2. The Bidder (proposer) has _____ has not _____ participated in any previous contract or subcontract subject to the Equal Opportunity Clause prescribed by Executive Order 11246, as amended.
3. The Bidder (proposer) has _____ has not _____ filed with the Joint Reporting Committee the annual compliance report on Standard Form 100 (EEO-1 Report).
4. The Bidder (proposer) does _____ does not _____ employ fifty (50) or more employees.

(Name of Bidder)

BY: _____
(Signature)

TITLE: _____

DATE: _____

IN WITNESS WHEREOF, the Principal and Surety have hereunto caused this Bond to be duly executed and acknowledged by their appropriate officials as set forth below this _____ day of _____, 20_____.

PRINCIPAL (If Sole Proprietor or Partnership)

(Firm Name)

ATTEST :

By: _____
(SEAL)

Title (Sole Proprietor or Partner)

PRINCIPAL (If Corporation)

(Impress Corporate Seal)

(Corporation Name)

By: _____
(President)

Attest: _____
(Secretary)

SURETY:

By: _____
Attorney-In-Fact
(Power of Attorney Must Be Attached)

END OF PROPOSAL FORMS

Item P-101 Preparation/Removal of Existing Pavements (Addendum No. 4)

DESCRIPTION

101-1 This item shall consist of preparation of existing pavement surfaces for overlay, surface treatments, removal of existing pavement, and other miscellaneous items. The work shall be accomplished in accordance with these specifications and the applicable plans.

EQUIPMENT AND MATERIALS

101-2 All equipment and materials shall be specified here and in the following paragraphs or approved by the Resident Project Representative (RPR). The equipment shall not cause damage to the pavement to remain in place.

CONSTRUCTION

101-3.1 Removal of existing pavement.

The Contractor's removal operation shall be controlled to not damage adjacent pavement structure, and base material, cables, utility ducts, pipelines, or drainage structures which are to remain under the pavement.

a. Concrete pavement removal. Full depth saw cuts shall be made perpendicular to the slab surface. The Contractor shall saw through the full depth of the slab including any dowels at the joint, removing the pavement and installing new dowels as shown on the plans and per the specifications. Where the perimeter of the removal limits is not located on the joint and there are no dowels present, the perimeter shall be saw cut the full depth of the pavement. The pavement inside the saw cut shall be removed by methods which will not cause distress in the pavement which is to remain in place. If the material is to be wasted on the airport site, it shall be reduced to a maximum size of 6 inches. Concrete slabs that are damaged by under breaking shall be repaired or removed and replaced as directed by the RPR.

The edge of existing concrete pavement against which new pavement abuts shall be protected from damage at all times. Spall and underbreak repair shall be in accordance with the plans. Any underlying material that is to remain in place, shall be recompact and/or replaced as shown on the plans. Adjacent areas damaged during repair shall be repaired or replaced at the Contractor's expense.

b. Asphalt pavement removal. Asphalt pavement to be removed shall be cut to the full depth of the asphalt pavement around the perimeter of the area to be removed. If the material is to be wasted on the airport site, it shall be broken to a maximum size of 2 inches (mm).

c. Repair or removal of Base, Subbase, and/or Subgrade. All failed material including surface, base course, subbase course, and subgrade shall be removed and repaired as shown on the plans or as directed by the RPR. Materials and methods of construction shall comply with the applicable sections of these specifications. Any damage caused by Contractor's removal process shall be repaired at the Contractor's expense.

101-3.2 Preparation of joints and cracks prior to overlay/surface treatment. Remove all vegetation and debris from cracks to a minimum depth of 1 inch (25 mm). If extensive vegetation exists, treat the specific area with a concentrated solution of a water-based herbicide approved by the RPR. Fill all cracks greater than 1/4 inch (6 mm) wide) with a crack sealant per ASTM D6690. The crack sealant, preparation, and application shall be compatible with the surface treatment/overlay to be used. To minimize contamination of the asphalt with the crack sealant, underfill the crack sealant a minimum of 1/8 inch (3 mm), not to exceed 1/4 inch (6 mm). Any excess joint or crack sealer shall be removed from the pavement surface.

Wider cracks (over 1-1/2 inch wide (38 mm)), along with soft or sunken spots, indicate that the pavement or the pavement base should be repaired or replaced as stated below.

Cracks and joints may be filled with a mixture of emulsified asphalt and aggregate. The aggregate shall consist of limestone, volcanic ash, sand, or other material that will cure to form a hard substance. The combined gradation shall be as shown in the following table.

Gradation

Sieve Size	Percent Passing
No. 4 (4.75 mm)	100
No. 8 (2.36 mm)	90-100
No. 16 (1.18 mm)	65-90
No. 30 (600 µm)	40-60
No. 50 (300 µm)	25-42
No. 100 (150 µm)	15-30
No. 200 (75 µm)	10-20

Up to 3% cement can be added to accelerate the set time. The mixture shall not contain more than 20% natural sand without approval in writing from the RPR.

The proportions of asphalt emulsion and aggregate shall be determined in the field and may be varied to facilitate construction requirements. Normally, these proportions will be approximately one part asphalt emulsion to five parts aggregate by volume. The material shall be poured or placed into the joints or cracks and compacted to form a voidless mass. The joint or crack shall be filled to within +0 to -1/8 inches (+0 to -3 mm) of the surface. Any material spilled outside the width of the joint shall be removed from the pavement surface prior to constructing the overlay. Where concrete overlays are to be constructed, only the excess joint material on the pavement surface and vegetation in the joints need to be removed.

101-3.3 Removal of Foreign Substances/contaminates prior to overlay and remarking. Removal of foreign substances/contaminates from existing pavement that will affect the bond of the new treatment shall consist of removal of rubber, fuel spills, oil, crack sealer, at least 90% of paint, and other foreign substances from the surface of the pavement. Areas that require removal are designated on the plans and as directed by the RPR in the field during construction.

High-pressure water or rotary grinding may be used. If chemicals are used, they shall comply with the state's environmental protection regulations. Removal methods used shall not cause major damage to the pavement, or to any structure or utility within or adjacent to the work area. Major damage is defined as changing the properties of the pavement, removal of asphalt causing the aggregate to ravel, or removing pavement over 1/8 inch (3 mm) deep. If it is deemed by the RPR that damage to the existing pavement is caused by operational error, such as permitting the application method to dwell in one location for too long, the Contractor shall repair the damaged area without compensation and as directed by the RPR.

Removal of foreign substances shall not proceed until approved by the RPR. Water used for high-pressure water equipment shall be provided by the Contractor at the Contractor's expense. No material shall be deposited on the pavement shoulders. All wastes shall be disposed of in areas indicated in this specification or shown on the plans.

101-3.4 Concrete spall or failed asphaltic concrete pavement repair.

a. Repair of concrete spalls in areas to be overlaid with asphalt. The Contractor shall repair all spalled concrete as shown on the plans or as directed by the RPR. The perimeter of the repair shall be saw cut a minimum of 2 inches (50 mm) outside the affected area and 2 inches (50 mm) deep. The deteriorated material shall be removed to a depth where the existing material is firm or cannot be easily removed with a geologist pick. The removed area shall be filled with asphalt mixture with aggregate sized appropriately for the depth of the patch. The material shall be compacted with equipment approved by the RPR until the material is dense and no movement or marks are visible. The material shall not be placed in lifts over 4 inches (100 mm) in depth. This method of repair applies only to pavement to be overlaid.

b. Asphalt pavement repair. The Contractor shall repair all spalled concrete as shown on the plans or as directed by the RPR. The failed areas shall be removed as specified in paragraph 101-3.1b. All failed material including surface, base course, subbase course, and subgrade shall be removed. Materials and methods of construction shall comply with the applicable sections of these specifications.

101-3.5 Cold milling. Milling shall be performed with a power-operated milling machine or grinder, capable of producing a uniform finished surface. The milling machine or grinder shall operate without tearing or gouging the underlaying surface. The milling machine or grinder shall be equipped with grade and slope controls, and a positive means of dust control.

For the Base Bid, approximately 100 cubic yards of asphalt millings shall be disposed of at the maintenance facility as indicated on the Contract Drawings and approved by the Owner. The remaining asphalt millings shall be stockpiled at the location designated on GC101 of the Contract Drawings. The limits of the asphalt milling stockpile shall be staked and approved by the Owner and RPR and shall not exceed 15-feet in height. Compost filter sock shall be placed around the perimeter of the base of the stockpile in accordance with Item C-102.

Add-On No. 2 shall include a price adjustment per square yard of existing asphalt pavement removed by milling to dispose of off-airport property.

Add-On No. 3 shall include the site preparation and placement of millings in accordance with paragraph P-101-3.10 below.

All remaining non-asphalt millings shall be removed and disposed of off Airport property at the Contractor's expense. If the Contractor mills or grinds deeper or wider than the plans specify, the Contractor shall replace the material removed with new material at the Contractor's Expense.

a. Patching. The milling machine shall be capable of cutting a vertical edge without chipping or spalling the edges of the remaining pavement and it shall have a positive method of controlling the depth

of cut. The RPR shall layout the area to be milled with a straightedge in increments of 1-foot (30 cm) widths. The area to be milled shall cover only the failed area. Any excessive area that is milled because the Contractor doesn't have the appropriate milling machine, or areas that are damaged because of his negligence, shall be repaired by the Contractor at the Contractor's Expense.

b. Profiling, grade correction, or surface correction. The milling machine shall have a minimum width of 7 feet (2m) and it shall be equipped with electronic grade control devices that will cut the surface to the grade specified. The tolerances shall be maintained within +0 inch and -1/4 inch (+0 mm and -6mm) of the specified grade. The machine must cut vertical edges and have a positive method of dust control. The machine must have the ability to remove the millings or cuttings from the pavement and load them into a truck. All millings shall be removed and disposed of off the airport.

c. Clean-up. The Contractor shall sweep the milled surface daily and immediately after the milling until all residual materials are removed from the pavement surface. Prior to paving, the Contractor shall wet down the milled pavement and thoroughly sweep and/or blow the surface to remove loose residual material. Waste materials shall be collected and removed from the pavement surface and adjacent areas by sweeping or vacuuming. Waste materials shall be removed and disposed of off Airport property.

101-3.6. Preparation of asphalt pavement surfaces prior to surface treatment. Existing asphalt pavements to be treated with a surface treatment shall be prepared as follows:

a. Patch asphalt pavement surfaces that have been softened by petroleum derivatives or have failed due to any other cause. Remove damaged pavement to the full depth of the damage and replace with new asphalt pavement similar to that of the existing pavement in accordance with paragraph 101-3.4b.

b. Repair joints and cracks in accordance with paragraph 101-3.2.

c. Remove oil or grease that has not penetrated the asphalt pavement by scrubbing with a detergent and washing thoroughly with clean water. After cleaning, treat these areas with an oil spot primer.

d. Clean pavement surface immediately prior to placing the surface treatment so that it is free of dust, dirt, grease, vegetation, oil or any type of objectionable surface film.

101-3.7 Maintenance. The Contractor shall perform all maintenance work necessary to keep the pavement in a satisfactory condition until the full section is complete and accepted by the RPR. The surface shall be kept clean and free from foreign material. The pavement shall be properly drained at all times. If cleaning is necessary or if the pavement becomes disturbed, any work repairs necessary shall be performed at the Contractor's expense.

101-3.8 Preparation of Joints in Rigid Pavement prior to resealing. Prior to application of sealant material, clean and dry the joints of all scale, dirt, dust, old sealant, curing compound, moisture and other foreign matter. The Contractor shall demonstrate, in the presence of the RPR, that the method used cleans the joint and does not damage the joint.

101-3.8.1 Removal of Existing Joint Sealant. All existing joint sealants will be removed by plowing or use of hand tools. Any remaining sealant and or debris will be removed by use of wire brushes or other tools as necessary. Resaw joints removing no more than 1/16 inch (2 mm) from each joint face. Immediately after sawing, flush out joint with water and other tools as necessary to completely remove the slurry.

101-3.8.2 Cleaning prior to sealing. Immediately before sealing, joints shall be cleaned by removing any remaining laitance and other foreign material. Allow sufficient time to dry out joints prior to sealing. Joint surfaces will be surface-dry prior to installation of sealant.

101-3.8.3 Joint sealant. Joint material and installation will be in accordance with Item P-605.

101-3.9 Preparation of Cracks in Flexible Pavement prior to sealing. Prior to application of sealant material, clean and dry the joints of all scale, dirt, dust, old sealant, curing compound, moisture and other foreign matter. The Contractor shall demonstrate, in the presence of the RPR, that the method used cleans the cracks and does not damage the pavement.

101-3.9.1 Preparation of Cracks. Widen crack with router by removing a minimum of 1/16 inch (2 mm) from each side of crack. Immediately before sealing, cracks will be blown out with a hot air lance combined with oil and water-free compressed air.

101-3.9.2 Removal of Existing Crack Sealant. Existing sealants will be removed by routing or random crack saw. Following routing or sawing any remaining debris will be removed by use of a hot lance combined with oil and water-free compressed air.

101-3.9.3 Crack Sealant. Crack sealant material and installation will be in accordance with Item P-605.

101-3.9.4 Removal of Pipe and other Buried Structures.

a. Removal of Existing Pipe Material. Remove the types of pipe as indicated on the plans. The pipe material shall be legally disposed of off-site in a timely manner following removal. Trenches shall be backfilled with material equal to or better in quality than adjacent embankment. Trenches under paved areas must be compacted to 95% of ASTM D1557.

b. Removal of Inlets/Manholes. Where indicated on the plans or as directed by the RPR, inlets and/or manholes shall be removed and legally disposed of off-site in a timely fashion after removal. Excavations after removal shall be backfilled with material equal or better in quality than adjacent embankment. When under paved areas must be compacted to 95% of ASTM D1557, when outside of paved areas must be compacted to 95% of ASTM D698.

101-3.10 Placement of Asphalt Millings (Add-On No. 3). The Contractor shall place asphalt millings to the dimensions indicated on the plans and as staked and approved by the Owner and RPR. The Contractor shall perform the following operations:

1. Clear and grub the area shown on the Contract Drawings and staked out by the RPR and Owner in accordance with Item P-151. Payment will be made under Item P-151, Clearing and Grubbing.
2. Strip the existing topsoil in accordance with Item P-152. Payment shall be made under Item T-905, Topsoil.
3. Compact the existing subgrade in accordance with Item P-152. No separate payment shall be made for compacting subgrade.
4. Place separation geotextile in accordance with Item P-209. Payment shall be made under Item P-209, Separation Geotextile.
5. Place and compact millings in two 9-inch lifts to a total depth not to exceed 18-Inches. Final grades will be provided to the Contractor prior to construction. Payment shall be made under Item P-101.

Additional work required to facilitate the spreading and compacting of asphalt millings shall be in accordance with Section 40-04 of the FAA General Provisions.

METHOD OF MEASUREMENT

101-4.1 Preparation of Joints and Cracks. The unit of measurement for preparation of joints and cracks shall be per lump sum.

101-4.2 Pavement removal. The unit of measurement for pavement removal shall be the number of square yards removed by the Contractor regardless of depth. Any pavement removed outside the limits of removal because the pavement was damaged by negligence on the part of the Contractor shall not be included in the measurement for payment. No direct measurement or payment shall be made for saw cutting. Saw cutting shall be incidental to pavement removal. Dowel bar installation shall be incidental to pavement removal.

101-4.3 Cold milling, Profile milling, and Milling to Remove Delaminated Pavement. The unit of measurement for cold milling, profile milling, milling to remove delaminated pavement and price adjustment for disposal of asphalt millings off-site shall be the number of square yards removed. The location and average depth of the profile milling shall be as shown on the plans. The price adjustment for disposal of asphalt millings off-site shall include any cost adjustment, positive or negative, required to facilitate the off-site disposal of asphalt millings as it relates to the costs associated with the on-site stockpiling described in the Base Bid.

101-4.4 Removal and Disposal of Existing Drainage Structures. The unit of measurement for other buried structures will be made at the contract unit price for each completed and accepted item. This price shall be full compensation for all labor, equipment, tools, and incidentals necessary to complete this item in accordance with paragraph 101-3.9.4.

101-4.5 Removal and Disposal of Existing Drainage Pipe. The unit of measurement for removal of pipe and other buried structures will be made at the contract unit price for each completed and accepted item. This price shall be full compensation for all labor, equipment, tools, and incidentals necessary to complete this item in accordance with paragraph 101-3.9.4.

101-4.6 Partial Removal of Buried Structures. The unit of measurement for partial removal of buried structures will be made at the contract unit price for each completed and accepted item. This price shall be full compensation for all labor, equipment, tools, and incidentals necessary to complete this item in accordance to plans.

101-4.7 Placement of Asphalt Millings. The unit of measurement for placement of asphalt millings shall be the number of square yards of millings placed in the lifts and depths indicated on the Contract Drawings. This price shall be full compensation for all labor, equipment, tools, and incidentals necessary to complete this item. The locations shall be staked by the Owner and RPR prior to construction.

BASIS OF PAYMENT

101-5.1 Payment. Payment shall be made at contract unit price for the unit of measurement as specified above. This price shall be full compensation for furnishing all materials and for all preparation, hauling, and placing of the material and for all labor, equipment, tools, and incidentals necessary to complete this item.

Item P-101-5.1	Preparation of Joints and Cracks – per lump sum
Item P-101-5.2	AC Pavement Removal, 4-10” Depth - per square yard
Item P-101-5.3	AC Pavement Removal, 10-18” Depth - per square yard
Item P-101-5.4	PCC Pavement Removal, 6-10” Depth - per square yard

Item P-101-5.5	Cold Milling, to a Depth of Up to 3 1/2” – per square yard
Item P-101-5.6	Profile Milling – per square yard
Item P-101-5.7	Milling to Remove Delaminated Pavement – per square yard
Item P-101-5.8	Remove and Dispose Existing Drainage Structure – per each
Item P-101-5.9	Remove and Dispose Existing Drainage Pipe – per linear foot
Item P-101-5.10	Partial Removal of Buried Structure – per each
Item P-101-5.11	Price Adjustment for Disposal of Asphalt Millings Off-Site – per square yard
Item P-101-5.12	Placement of Asphalt Millings – per square yard

REFERENCES

The publications listed below form a part of this specification to the extent referenced. The publications are referred to within the text by the basic designation only.

Advisory Circulars (AC)

AC 150/5380-6 Guidelines and Procedures for Maintenance of Airport Pavements.

ASTM International (ASTM)

ASTM D6690 Standard Specification for Joint and Crack Sealants, Hot Applied, for Concrete and Asphalt Pavements

END OF ITEM P-101

Item P-151 Clearing and Grubbing (Addendum No. 4)

DESCRIPTION

151-1.1 This item shall consist of clearing or clearing and grubbing, including the disposal of materials, for all areas within the limits designated on the plans or as required by the Resident Project Representative (RPR).

a. Clearing and grubbing shall consist of clearing the surface of the ground of the designated areas of all trees, stumps, down timber, logs, snags, brush, undergrowth, hedges, heavy growth of grass or weeds, fences, structures, debris, and rubbish of any nature, natural obstructions or such material which in the opinion of the RPR is unsuitable for the foundation of strips, pavements, or other required structures, including the grubbing of stumps, roots, matted roots, foundations, and the disposal from the project of all spoil materials resulting from clearing and grubbing.

CONSTRUCTION METHODS

151-2.1 General. The areas denoted on the plans to be cleared and grubbed shall be staked on the ground by the RPR.

The removal of existing structures and utilities required to permit orderly progress of work shall be accomplished by local agencies, unless otherwise shown on the plans. Whenever a telephone pole, pipeline, conduit, sewer, roadway, or other utility is encountered and must be removed or relocated, the Contractor shall advise the RPR who will notify the proper local authority or owner to secure prompt action.

151-2.1.1 Disposal. All materials removed by clearing or by clearing and grubbing shall be disposed of outside the Airport's limits at the Contractor's expense, except when otherwise directed by the RPR.. In no case, shall any discarded materials be left in windrows or piles adjacent to or within the airport limits. When the Contractor is required to locate a disposal area outside the airport property limits, the Contractor shall obtain and file with the RPR permission in writing from the property owner for the use of private property for this purpose.

151-2.1.2 Blasting. Blasting shall not be allowed.

151-2.2 Clearing. Not used.

151-2.3 Clearing and grubbing. In areas designated to be cleared and grubbed, all stumps, roots, buried logs, brush, grass, and other unsatisfactory materials as indicated on the plans, shall be removed.. Tap roots and other projections over 1-1/2 inches (38 mm) in diameter shall be grubbed out to a depth of at least 18 inches (0.5 m) below the surrounding grade.

The removal of any buildings, miscellaneous structures, curbs, or roads will not be required. Only vegetation will be required to be cleared and grubbed. The holes or openings remaining from the grubbing of vegetation shall be backfilled with acceptable material and properly compacted.

METHOD OF MEASUREMENT

151-3.1 The quantities of clearing and grubbing as shown by the limits on the plans shall be per lump sum of land specifically cleared and grubbed.

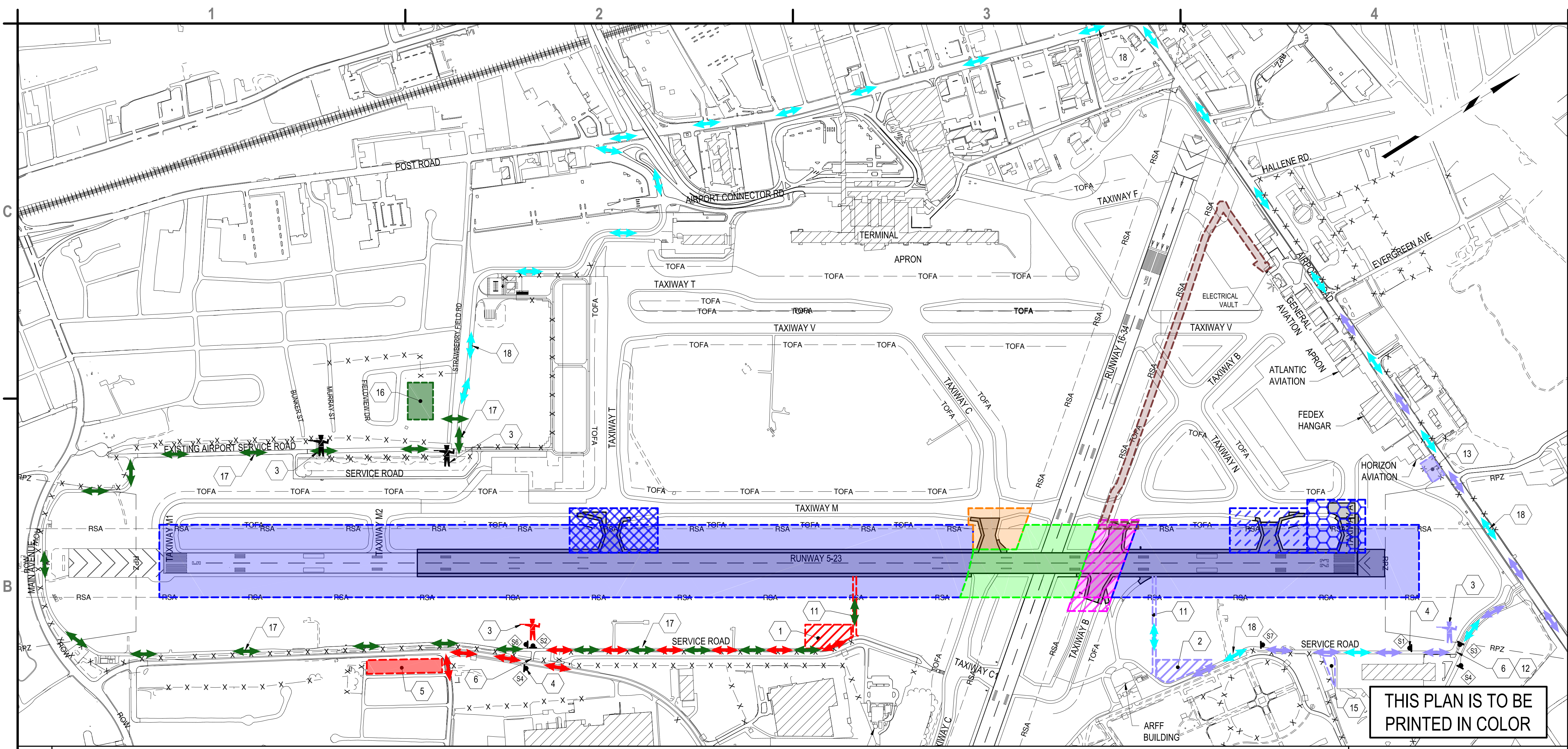
BASIS OF PAYMENT

151-4.1 Payment shall be made at the contract unit price per lump sum for clearing and grubbing. This price shall be full compensation for furnishing all materials and for all labor, equipment, tools, and incidentals necessary to complete the item.

Payment will be made under:

Item P-151-4.2 Clearing and grubbing - per lump sum

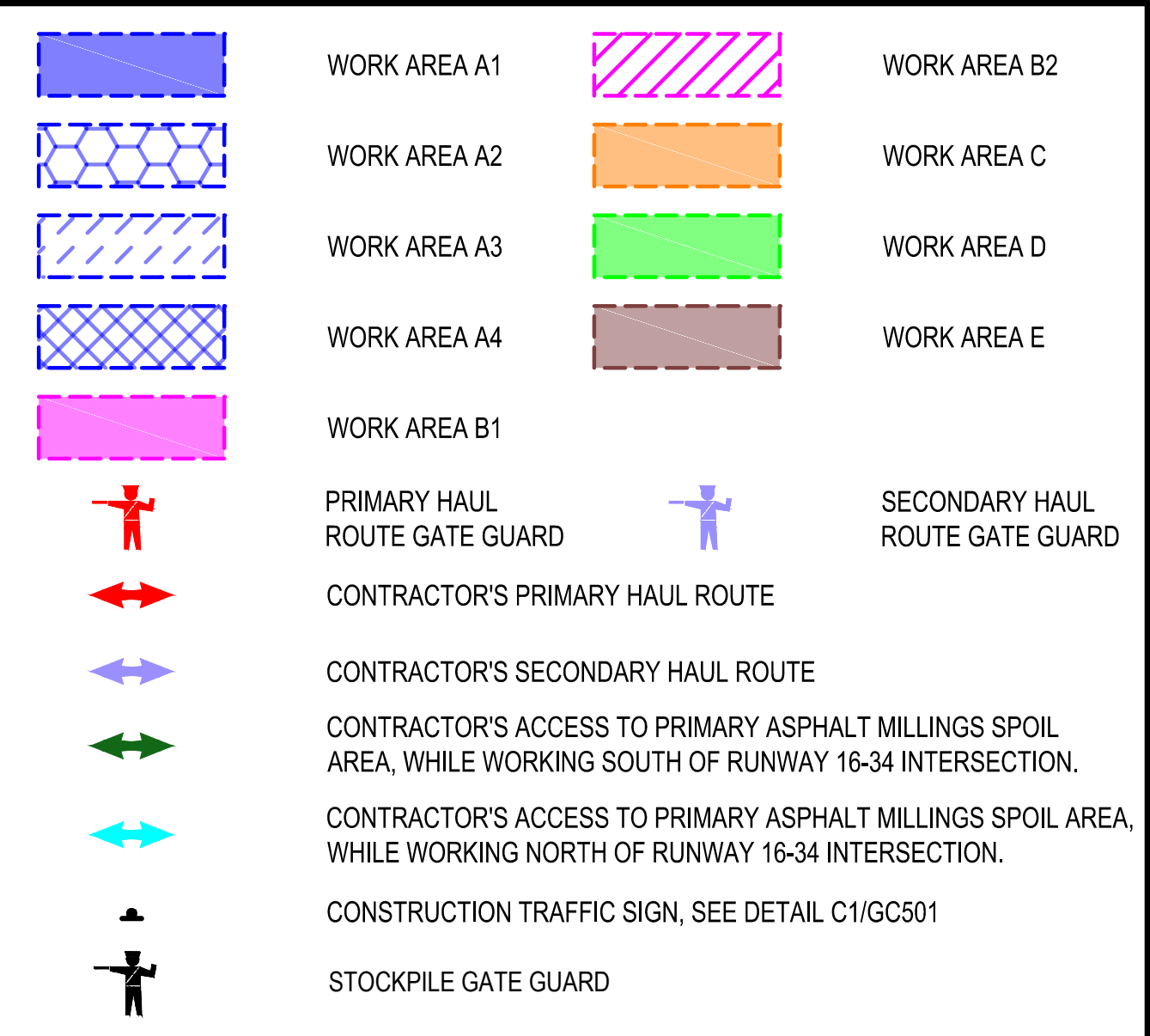
END OF ITEM P-151



THIS PLAN IS TO BE PRINTED IN COLOR

B1 CONSTRUCTION SAFETY AND PHASING PLAN - OVERALL
SCALE: 1" = 400'

- CONTRACTOR'S PRIMARY STAGING AREA.
- CONTRACTOR'S SECONDARY STAGING AREA.
- GATE GUARD.
- TEMPORARY CONSTRUCTION ACCESS SIGN, ITEM CX-106. SEE DETAIL C1/GC501.
- CONTRACTOR'S PERSONNEL PARKING
- CONTRACTOR'S ACCESS TO WORK AREA.
- TEMPORARY HAUL ROUTE ITEM CX-106. SEE DETAIL B1/GC502.
- REMOVE SINGLE SWING GATE AND REPLACE WITH 24-FOOT DOUBLE SWING GATE ITEM CX-106, SEE DETAIL C3/GC501.
- CONTRACTORS AND ENGINEERS FIELD OFFICE TRAILER LOCATION, ITEM CX-106.
- SECONDARY ASPHALT MILLINGS SPOIL AREA, CLEAN ASPHALT MILLINGS ONLY. APPROXIMATELY 100 CY OF MATERIAL TO BE PLACED IN THIS LOCATION. SEE KEYED NOTE 16 FOR THE PRIMARY ASPHALT MILLINGS SPOIL LOCATION
- PRIMARY ASPHALT MILLINGS SPOIL AREA, BASE BID (SEE ENLARGEMENT PLAN ON GC101 FOR ALTERNATE ASPHALT MILLINGS SPOIL LAY-DOWN, ADD-ON NO. 3)
- CONTRACTOR'S ACCESS TO PRIMARY ASPHALT MILLINGS SPOIL AREA, WHILE WORKING SOUTH OF RUNWAY 16-34 INTERSECTION.
- CONTRACTOR'S ACCESS TO PRIMARY ASPHALT MILLINGS SPOIL AREA, WHILE WORKING NORTH OF RUNWAY 16-34 INTERSECTION.



A3 PROJECT SCHEDULE
SCALE: NOT TO SCALE

PHASE	GENERAL WORK SUMMARY	WORK AREA	DURATION	WORK HOURS					
					CONSTRUCTION YEAR 2026				
					MARCH	APRIL	MAY	JUNE	JULY
1	PHASE 1 & PHASE 2*	A1, A2, A3, A4, B2, C, E	143 CALENDAR DAYS	10:00 PM MONDAY TO 5:00 AM THURSDAY (MIDWEEK SHIFT)					
2	PHASE 1	D	26* CALENDAR DAYS	NIGHTLY 10:00 PM TO 5:00 AM					
3	PHASE 2*	A1, B1, C	16 CALENDAR DAYS	24 HOURS					
4	PHASE 3	A1, A2, A3, A4, B1, B2, C, D	18 CALENDAR DAYS	NIGHTLY 10:00 PM TO 5:00 AM					
				NO WORK - ASPHALT CURING					
				PHASE 4					

*PHASE 2 TO BE CONCURRENT WITH PHASE 1, DATES OF CLOSURE FOR PHASE 2 TO BE APPROVED BY RIAC PRIOR TO THE NOTICE TO PROCEED OF THE PROJECT.

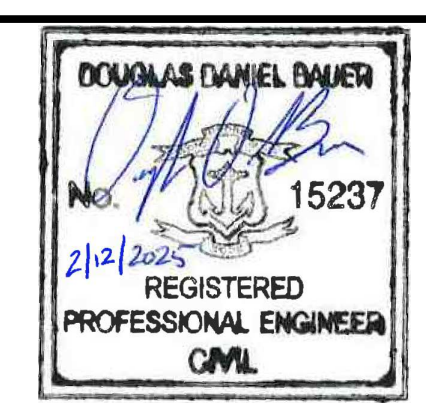
A1 KEYED NOTES AND SHEET NOTES
SCALE: NOT TO SCALE

A2 LEGEND
SCALE: NOT TO SCALE

A3 PROJECT SCHEDULE
SCALE: NOT TO SCALE



C&S Engineers, Inc.
499 Col. Eileen Collins Blvd.
Syracuse, New York 13212
Phone: 315-455-2000
Fax: 315-455-9667
www.cscos.com



Rhode Island
Airport Corporation

RUNWAY 5-23 REHABILITATION

RHODE ISLAND T. F. GREEN INTERNATIONAL AIRPORT

MARK	DATE	DESCRIPTION
1	3/19/2025	ADDENDUM NO. 04

REVISIONS

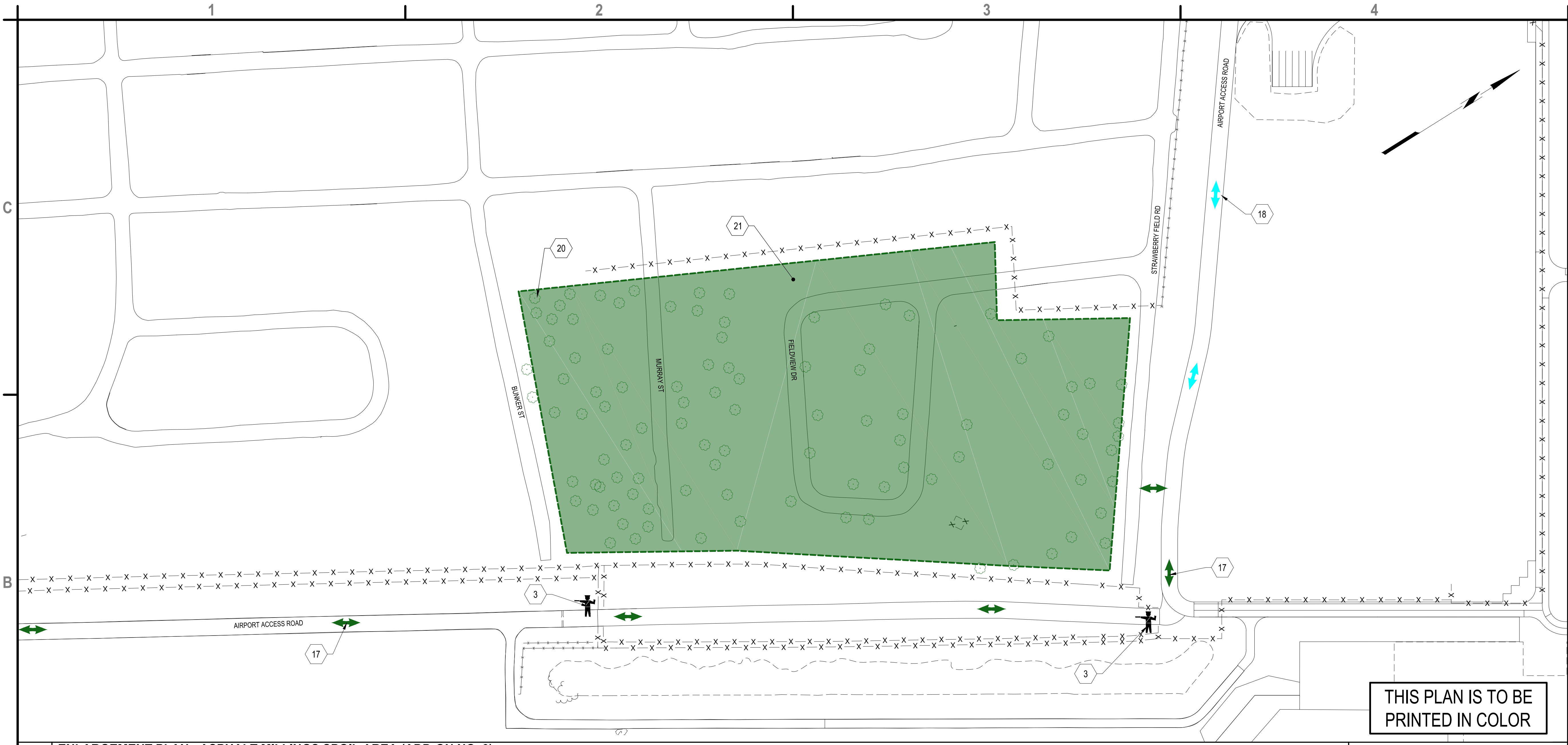
PROJECT NO: 10801001
DATE: FEBRUARY 2025
DRAWN BY: T.J. CORCORAN
DESIGNED BY: T.J. CORCORAN
CHECKED BY: D.D. BAUER

CONTRACTOR SHALL VERIFY ALL CONDITIONS ON JOB SITE AND NOTIFY THE OWNER OF ANY VARIATIONS FROM DIMENSIONS SHOWN ON THESE DRAWINGS BEFORE PROCEEDING WITH ANY CONSTRUCTION.

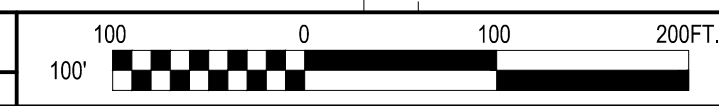
CONSTRUCTION SAFETY AND PHASING PLAN - OVERALL

GC100

SHEET NO. 8 OF 203



THIS PLAN IS TO BE PRINTED IN COLOR



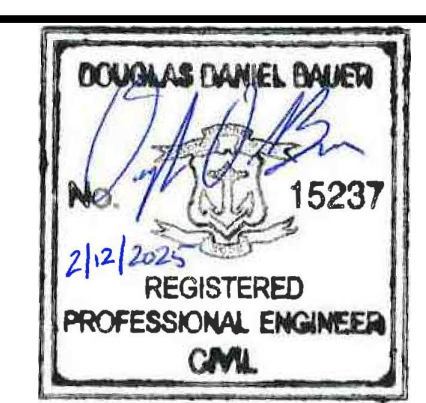
B1 ENLARGEMENT PLAN - ASPHALT MILLINGS SPOIL AREA (ADD-ON NO. 3)
SCALE: 1" = 100'

- A1** KEYED NOTES
SCALE: NOT TO SCALE
- 3. GATE GUARD.
 - 17. CONTRACTOR'S ACCESS TO PRIMARY ASPHALT MILLINGS SPOIL AREA, WHILE WORKING SOUTH OF RUNWAY 16-34 INTERSECTION.
 - 18. CONTRACTOR'S ACCESS TO PRIMARY ASPHALT MILLINGS SPOIL AREA, WHILE WORKING NORTH OF RUNWAY 16-34 INTERSECTION.
 - 20. CLEAR AND GRUB TREES AND SHRUBS WITHIN THE LIMITS SHOWN, ITEM P-151 (ADD-ON NO. 3)
 - 21. PLACE ASPHALT MILLINGS GENERATED FROM THE PROJECT STARTING AT THE NORTH END OF THE SITE. SEE SHEET NOTES A2, THIS SHEET FOR ADDITIONAL INFORMATION (ADD-ON NO. 3).

- A2** SHEET NOTES
SCALE: NOT TO SCALE
- 1. ALL WORK ASSOCIATED WITH CLEARING AND GRUBBING THE SITE, INCLUDING BUT NOT LIMITED TO, TOPSOIL STRIPPING, SUBGRADE COMPACTION, PLACEMENT OF SEPARATION GEOTEXTILE AND PLACEMENT AND COMPACTION OF ASPHALT MILLINGS SHALL BE UNDER ADD-ON NO. 3.
 - 2. LIMITS OF ASPHALT MILLINGS AND STRIPPED TOPSOIL SHALL BE STAKED BY THE RPR AND OWNER.
 - 3. REMOVAL OF ASPHALT ROADWAYS AND CURB IS NOT REQUIRED.
 - 4. CONTRACTOR SHALL PERFORM THE FOLLOWING FOR ADD-ON NO. 3.
 - a) CLEAR AND GRUB TREES AND BRUSH WITHIN THE LIMITS SHOWN, ITEM P-151.
 - b) STRIP AND STOCKPILE TOPSOIL IN THE LOCATIONS STAKED BY THE RPR, ITEM T-905.
 - c) COMPACT EXISTING SUBGRADE IN ACCORDANCE WITH P-152.
 - d) PLACE SEPARATION GEOTEXTILE, ITEM P-209.
 - e) PLACE AND COMPACT ASPHALT MILLINGS TO A DEPTH OF 18" IN LIFTS NOT TO EXCEED 9-INCHES, ITEM P-101.



C&S Engineers, Inc.
499 Col. Eileen Collins Blvd.
Syracuse, New York 13212
Phone: 315-455-2000
Fax: 315-455-9667
www.cscos.com



Rhode Island
Airport Corporation

RUNWAY 5-23 REHABILITATION

**RHODE ISLAND T. F. GREEN
INTERNATIONAL AIRPORT**

MARK	DATE	DESCRIPTION
1	3/19/2025	ADDENDUM NO. 04
REVISIONS		
PROJECT NO.: 108010001		
DATE: FEBRUARY 2025		
DRAWN BY: M.D. HERNANDEZ		
DESIGNED BY: J.V. CONESE		
CHECKED BY: D.D. BAUER		
CONTRACTOR SHALL VERIFY ALL CONDITIONS ON JOB SITE & NOTIFY THE OWNER OF ANY VARIATIONS FROM DIMENSIONS SHOWN ON THESE DRAWINGS BEFORE PROCEEDING WITH ANY CONSTRUCTION.		

**ENLARGEMENT PLAN
- ASPHALT MILLINGS
SPOIL AREA
(ADD-ON NO. 3)**

GC101

SHEET NO. 8A OF 203

Mar 19, 2025 - 11:24am
 C:\Users\atoram\OneDrive\Documents\C&S Companies\108010001-R runway 5-23 Rehabilitation\108010001-Runway 5-23 Rehabilitation\108010001_GC-PL.dwg