



Rhode Island
Airport Corporation



Permanent Noise Monitoring Act Quarterly Operations Report

3rd Quarter 2023

Prepared by:

Rhode Island Airport Corporation

For further information, please contact Dawn Mineker at 401-691-2417.



TABLE OF CONTENTS

Introduction..... 3

Permanent Noise Monitoring Act..... 3

Passenger Activity 4

Aircraft Operations..... 5

 Total Operations 5

 Part 36 Certification 7

 Late Night Operations 9

 By Time..... 9

 By Airline 9

 By Aircraft Category 10

Part 150 Noise Abatement Corridor Compliance..... 11

 By Airline..... 14

 By Runway..... 15

Noise Complaints 19

Appendix A: Part 150 Corridor Deviations..... 20



Introduction

This report is prepared for the Rhode Island General Assembly in conformance with the Permanent Noise Monitoring Act of 1998, as amended. It contains statistical information on aircraft operations, activity levels by aircraft types, and noise complaints for the Third Quarter, 2023. The Third Quarter is defined as operations from July through September of 2023.

Rhode Island T. F. Green International Airport is a small-hub commercial service airport located in Warwick, RI. It serves the Rhode Island, Southern Massachusetts and Eastern Connecticut communities.

The airport has two active runways, 5-23 and 16-34. Runway 5-23 is 8,700 feet long and 150 feet wide. It is oriented in a north/south direction and serves as the primary runway for most operations. Runway 16-34 is the “crosswind” runway oriented in a northwest/southeast direction. It is 6,081 feet long and 150 feet wide and used as weather conditions dictate.

Rhode Island T. F. Green International Airport was among the first airports in the country to participate in the Federal Aviation Administration’s Noise and Land Use Compatibility Program, commonly referred to as Part 150. Under the direction of the State of Rhode Island and now the RIAC, Rhode Island T. F. Green International Airport has had an active noise mitigation program since the early 1980s.

In 1998, RIAC undertook a complete update of the original Part 150 Study and recommended several new operations procedures designed to minimize noise impacts on surrounding communities. The center of these recommendations involved the implementation of noise abatement departure and arrival procedures for turbojet aircraft.

In June 2000, the FAA approved these new procedures and the local air traffic control tower implement the assigned departure headings in an effort to reduce the number of persons adversely affected by aircraft operations.

Permanent Noise Monitoring Act

In 1998, the Rhode Island Legislature enacted Title 1, Aeronautics, Chapter 1-5; Permanent Noise Monitoring Act – Aircraft Operations Monitoring System (AOMS). This Act required the RIAC to install an aircraft operations monitoring system, and collect and report a summary of the collected data on a quarterly basis. This document is generated to meet those requirements.

The AOMS previously relied on five (5) radar sensors deployed throughout the State of Rhode Island. The sensors were subject to repeated failures resulting in loss of data when one or more sensors were not fully operational. The sensors and data acquisition system have exceeded their expected service life. RIAC has updated the system by integrating multiple existing aircraft surveillance systems merged into a single data stream to improve reliability and accuracy of data. The data is archived for use in generating reports. Information collected includes; aircraft type, flight number, registration number, altitude, arrival/departure status and the origin or destination.



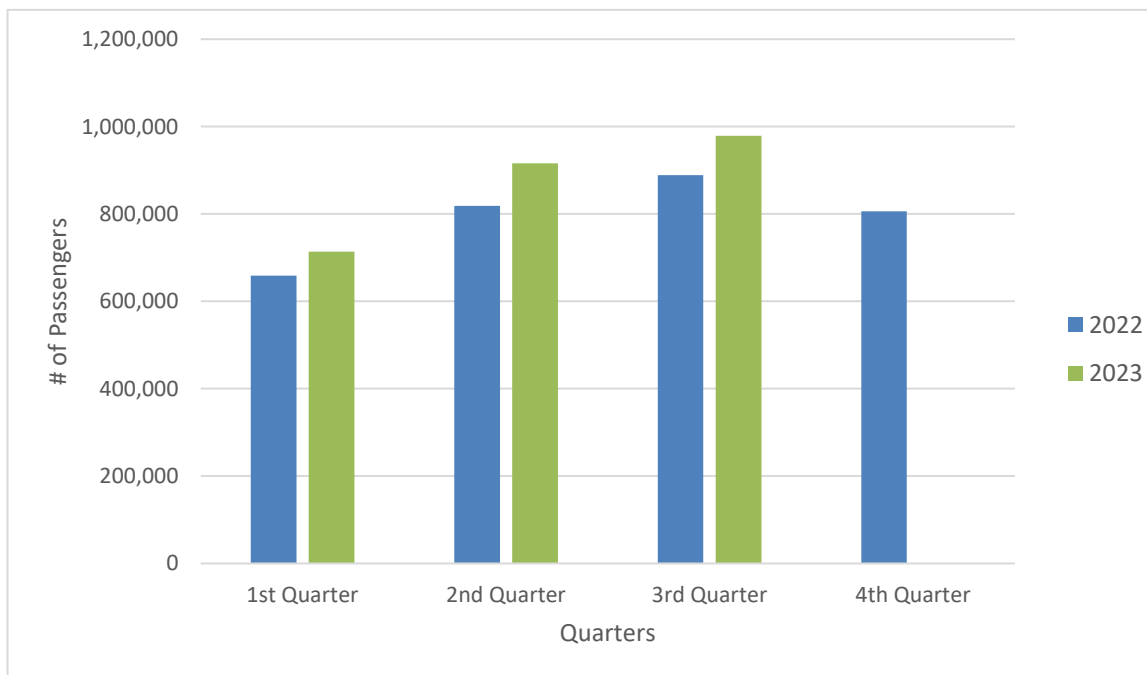
Passenger Activity

Airports use 2 criteria to measure activity; the number of operations and the number of passengers. This section discusses the passenger activity levels associated with aircraft operations at Rhode Island T. F Green International Airport in the Third Quarter of 2023.

Rhode Island T. F. Green International Airport served approximately 979, 211 passengers during the Third Quarter of 2023. Figure 1 shows the number of passengers that have used the airport via scheduled air carriers, commuter and charter flights since 2022.

In 2020 through 2021 there was a downturn in passenger activity due to the travel impacts of the COVID-19 pandemic. Air travel has started to rebound, resulting in an uptick in passenger levels.

Figure 1: Total Passengers, by Quarter



Source: RIAC 2022 - 2023 Passenger Activity Report



Aircraft Operations

Aircraft operations can be classified in a number of ways including by type of aircraft, arrivals/departures, origin/destination, airline fleet, Part 36 (relative noisiness) and time of day.

To present the overall perspective of operations, Table 1, highlights the arrivals and departures of all aircraft by runway at Rhode Island T. F. Green International Airport.

In general aircraft must take off into the wind, therefore, aircraft also arrive into the wind to remain consistent with the traffic flow and avoid aircraft departing and arriving in the same direction.

As previously stated, there are 2 runways at Rhode Island T. F. Green International Airport, 5-23 and 16-34. Runways are given numbers based on the compass heading for each runway end. By designating each runway end, the Air Traffic Control Tower and pilots know which direction to land or depart. For example, Runway 5 has a compass heading of 050 degrees and is oriented to the north. Aircraft operating on this runway will depart to the north and arrive from the south. Conversely, Runway 23 has a heading of 230 degrees and is oriented to the south. Aircraft operating on Runway 23 will depart to the south and arrive from the north.

Total Operations

The Aircraft Operations Monitoring System (AOMS) collected 16,109 flight tracks for aircraft operations during this period. There were 8,017 departures and 8,092 arrivals for an average of 175 operations per day. Table 1 depicts aircraft operations by runway and operation type.¹

Table 1: Total AOMS Operations by Runway, 3rd Quarter 2023²

Runway	Arrivals		Departures		Total	
	# of Ops	%	# of Ops	%	# of Ops	%
5	2,501	31%	2,583	32%	5,084	32%
16	181	2%	179	2%	360	2%
23	5,126	63%	5,079	63%	10,205	63%
34	284	4%	176	2%	460	3%
Total	8,092	100%	8,017	100%	16,109	100%

Source: RIAC 2023 Aircraft Operations Monitoring System

¹ Detailed record of operations by aircraft type and time of day can be found on Rhode Island T.F. Green International Airport’s website, www.flyri.com, listed under Quarterly Aircraft Operations Report, Runway Operations Data 3rd Quarter 2023.

² The aggregate number of aircraft operations reported by the FAA for the 3rd Quarter 2023 was 17,465.



Figure 2 depicts the runway use graphically over an aerial view of the airport.

Figure 2: Aerial View of Total Operations, by Runway End, 3rd Quarter, 2023



Source: RIAC, Airline Activity Reports and Aircraft Operations Monitoring System 2023

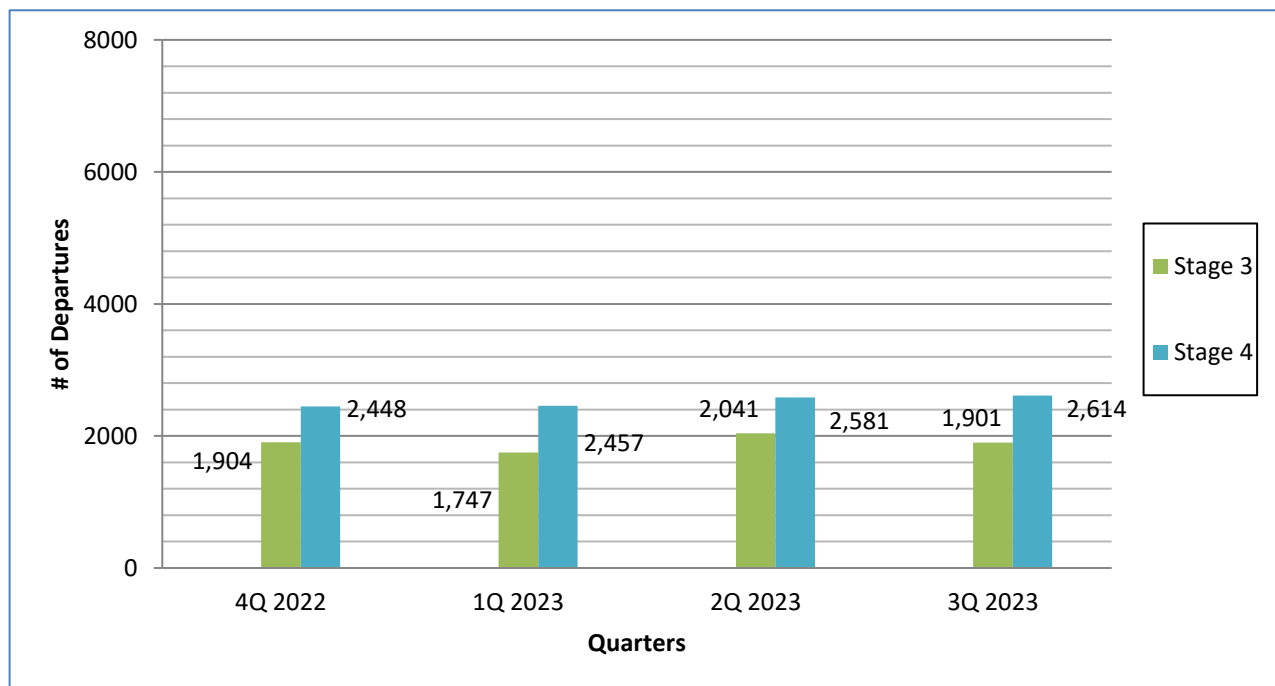


The balance of this report will focus on the scheduled commercial aircraft and cargo operations.

Part 36 Certification

During the Third Quarter of 2023 there were 4,992 total departures of commercial aircraft from Rhode Island T. F. Green International Airport, which is approximately 54 operations per day. Of the 4,992 departures, 4,665 consisted of jet aircraft with Stage 3 and Stage 4 engines, as shown in Figure 3. The overall percentage of pure Stage 3 aircraft operating at Rhode Island T. F. Green International Airport was at 42%. The overall percentage of Stage 4 aircraft operating at Rhode Island T. F. Green International Airport was at 52%.

Figure 3: Schedule Departures by Noise Classification



Source: RIAC, Airline Active Reports and Aircraft Operations Monitoring System 2022 - 2023

The scheduled airlines (air carrier and commuter) accounted for 4,515 (90%) of the 4,992 commercial departures from Rhode Island T. F. Green International Airport. The majority of airlines are operating at 100% pure Stage 3 and Stage 4 aircraft. Table 2 illustrates each scheduled air carrier's contribution to daily flights and percentage use of the quietest aircraft.



Table 2: Departures, by Part 36 Certification, 3rd Quarter 2023

Airline	Pure Stage 3 Aircraft		Pure Stage 4 Aircraft		Total Operations	Avg. Daily Operations
	# of Departures	%	# of Departures	%		
Avelo Airlines	2	100%	0	N/A	2	.02
Allegiant Airlines	68	100%	0	N/A	68	.7
Atlas Air	1	100%	0	N/A	1	.01
American Airlines	148	12%	1,106	88%	1,254	14
Breeze Airways	159	34%	314	66%	473	5
Delta Airlines	357	56%	280	44%	637	7
Eastern Airlines	2	100%	0	N/A	2	.02
Global X	0	N/A	2	100%	2	.02
JetBlue	213	77%	63	23%	276	3
Omni Air	2	100%	0	N/A	2	.02
Skyhigh Dominicano	16	100%	0	N/A	16	.1
Southwest Airlines	887	77%	263	23%	1,150	13
Sun Country Airlines	30	100%	0	N/A	30	.3
United Airlines	16	3%	586	97%	602	6
Total	1,901	42%	2,614	58%	4,515	49.29

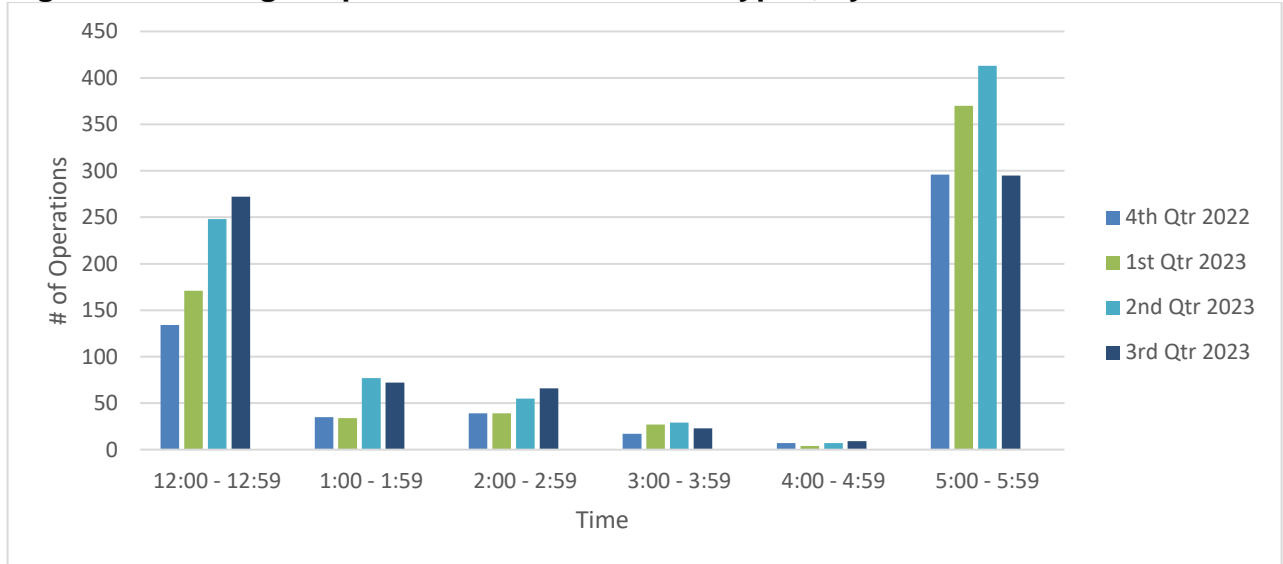
Source: RIAC Air Carrier Reports, 2023

Late Night Operations (Midnight – 6:00 a.m.)

Airline operations constituted the largest number of late night operations during this quarter with 634 operations out of an overall total of 737 operations. Late night commuter operations totaled 80 operations and general aviation operations totaled 23. Of the late night operations, 272 occurred between midnight and 1:00 a.m. and 295 occurred between 5:00 a.m. and 5:59 a.m. as shown in Figure 4.



Figure 4: Late Night Operations for All Aircraft Types, by Time

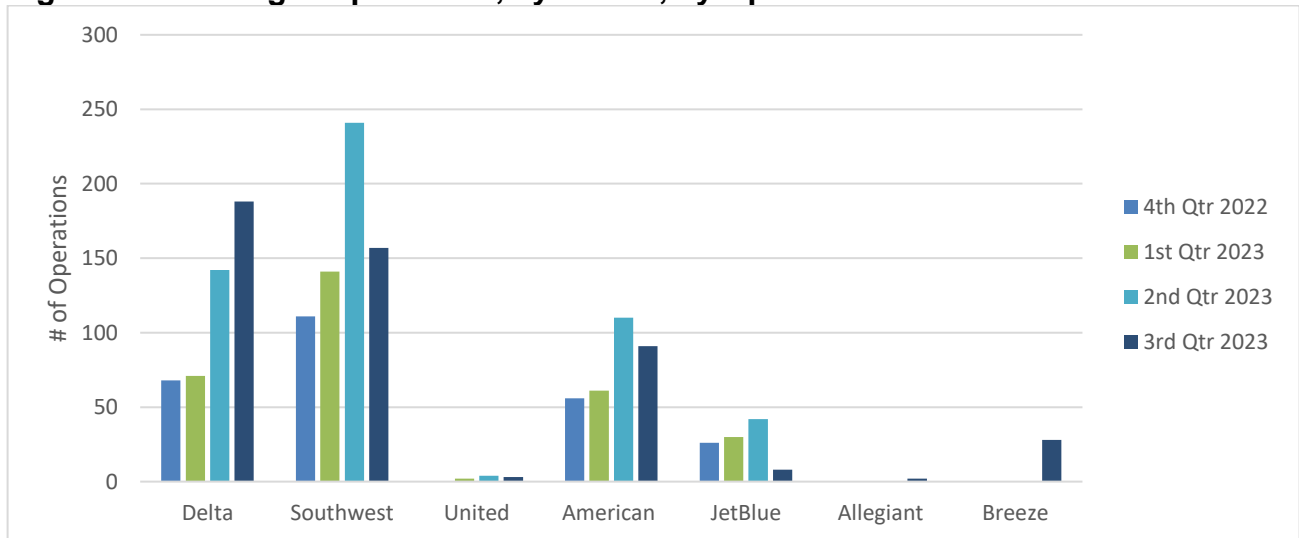


Source: RIAC Operations Logs & Operations Monitoring System 2022 - 2023

Late night operations consist of late night arrivals and early morning departures. Late night arrivals are predominantly between midnight and 1:59 a.m. Late night departures are predominately between 5:00 a.m. and 5:59 a.m.

As shown in Figure 5, Delta Airlines had the greatest number of late night operations. It should be noted that this accounts for a small percentage of the individual airlines total operations at Rhode Island T. F. Green International Airport. A portion of these operations were arrivals of delayed flights attributed to weather or air traffic delays at the originating airports. Airline operations account for 84% of the late night operations, as depicted in Figure 6.

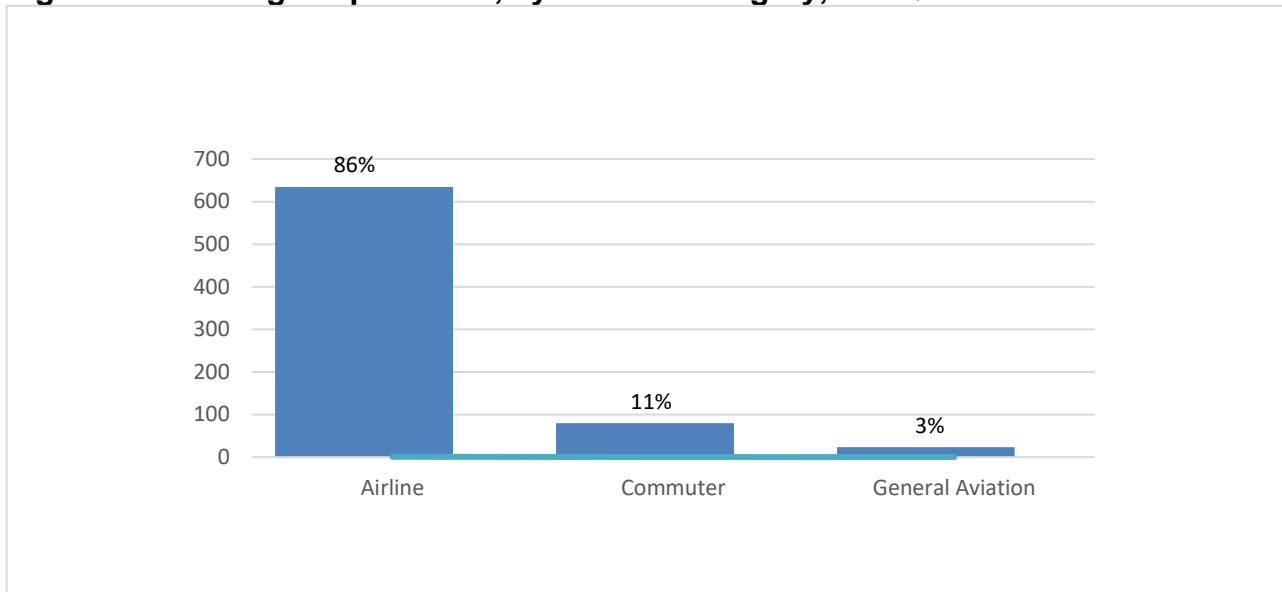
Figure 5: Late Night Operations, by Airline, by Operations



Source: RIAC Operations Logs & Operations Monitoring System 2022 - 2023



Figure 6: Late Night Operations, by Aircraft Category, 3rd Quarter 2023



Source: RIAC Operations Logs 2023

RIAC has implemented a voluntary nighttime curfew for operations between midnight and 6:00 a.m.

Part 150 Noise Abatement Corridor Compliance

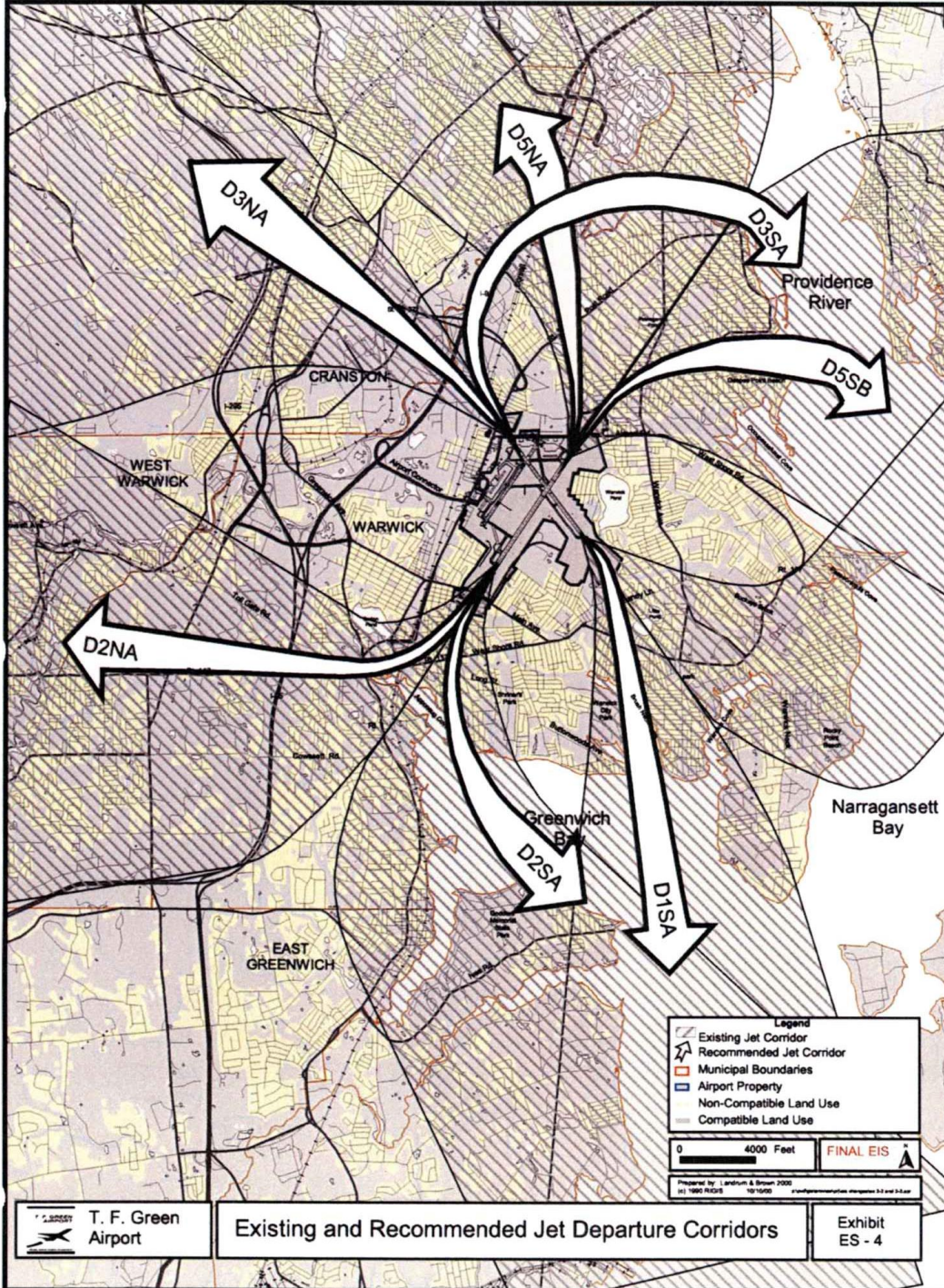
The first Part 150 Study and Noise Exposure Maps (NEM) were approved by the FAA for Rhode Island T. F. Green International Airport in 1986. The NEM has been updated several times, most recently in 2010 as part of the Environmental Impact Statement for the Airport Improvement Program (AIP) approved in the Record of Decision (ROD) issued in November of 2011.

RIAC implemented the use of noise abatement corridors beginning in June 2001. There are a total of eight corridors, comprised of at least one departure corridor per runway and one arrival corridor for Runway 34.

For all but one runway end, there are two flight tracks that jet aircraft may follow. The Air Traffic Control Tower issues a departure heading associated with one of the Part 150 corridors based on the aircraft's destination. It should be noted that pilots will proceed on their departure heading when deemed safe to do so, depending on several variable factors (i.e., type of aircraft, winds, weather, etc.). A description of these flight corridors is presented below and a graphical depiction of the corridors is shown in Figures 7 and 8.



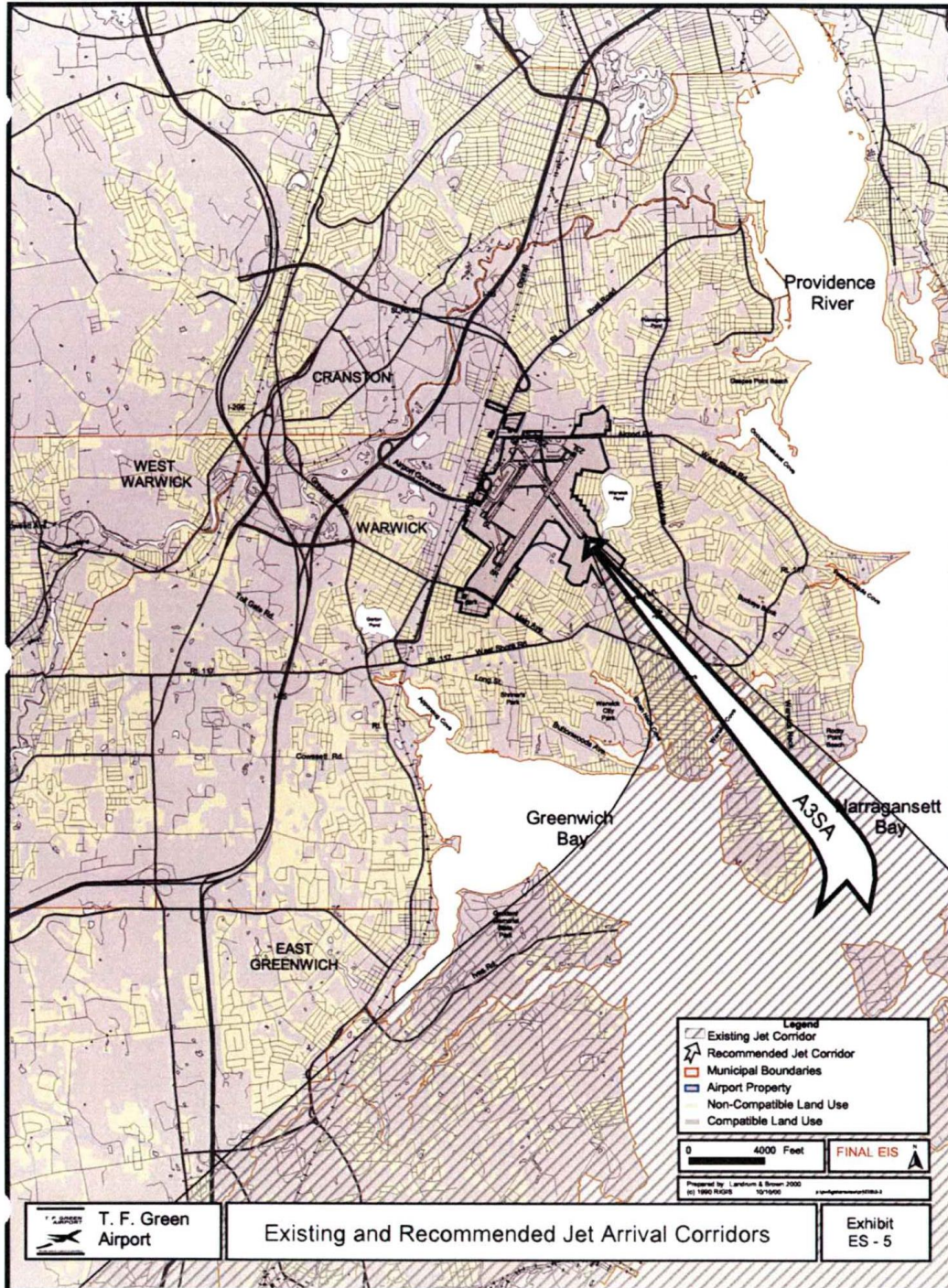
Figure 7 : Part 150 Noise Abatement Departure Corridors



Source: FAA, EIS for T. F. Green Air Traffic Control Noise Abatement Procedures, 2000. FAA approved Noise Abatement Measures 2000.



Figure 8 : Part 150 Noise Abatement Arrivals Corridor



Source: FAA, EIS for T. F. Green Air Traffic Control Noise Abatement Procedures, 2000. FAA approved Noise Abatement Measures 2000.



Runway 5:

Northbound Departures (D5NA): Jet aircraft will turn left as soon as practicable after passing runway end to fly a 360-degree heading until reaching 3 DME (Distance Measuring Equipment).

Southbound Departures (D5SB): Jet aircraft will turn right to a 080-degree heading until reaching 3 DME, passing over Passeonquis Cove, Gaspee Point Beach and Narragansett Bay.

Runway 23:

Northbound Departures (D2NA): Jet aircraft will turn right as soon as practicable after passing runway end to a 280-degree heading until reaching 3 DME. This measure is intended to direct departures under 3,000' over compatible land use areas in Apponaug along I-95 and SR 117.

Southbound Departures (D2SA): Jet aircraft will turn left as soon as practicable after passing runway end to a 160-degree heading until reaching 5 DME or intercepting the 180-degree radial (whichever occurs first). This measure is intended to route traffic over Greenwich Bay and along the north edge of Goddard Memorial State Park.

Runway 16:

Southbound Departures (D1SA): Jet aircraft will turn right to a 180-degree heading until reaching 3 DME or intercepting the PVD VORTAC 180-degree radial. This measure is intended to direct departures over compatible land use areas along Brush Neck Cove and Greenwich Bay.

Runway 34:

Northbound Departures (D3NA): Jet aircraft will turn left as soon as practicable after passing runway end to a 330-degree heading until reaching 4 DME. This measure is intended to direct departures along compatible land use areas located along SR37 and I-295.

Southbound Departures (D3SA): Jet aircraft will turn right to a 360-degree heading until reaching 3 DME. This measure is intended to direct departures along compatible land use areas along I-95 and the Pawtuxet River corridors.

Runway 34:

Arrivals (A3SA): Jet aircraft will intercept the final approach course before crossing the shoreline at Rocky Point Beach on Warwick Neck (4 DME from the PVD VORTAC). This measure is intended to keep jet aircraft following the same course along the extended runway centerline from beyond the shoreline.



An analysis of each air carrier and their compliance with these departure corridors was conducted using the Aircraft Operations Monitoring System. As shown on Table 3, the overall compliance with noise corridors by the air carriers is 89%. Overall cargo carrier compliance in maintaining the aircraft's departure flight track within the corridors is 92%.

Table 3: Noise Abatement Departure Corridor Total Compliance by Airline, 3rd Quarter 2023, All Runways

Airline	Departures					Deviations ¹	Percentage of Compliance
	RW 5	RW 23	RW 16	RW 34	Total Flight Tracks		
Allegiant Airlines	20	50	0	0	70	10	86%
American Airlines	442	798	0	10	1,250	127	90%
Atlas Air	0	1	0	0	1	1	0%
Axis Airways	1	0	0	0	1	0	100%
Breeze Airways	154	303	0	2	459	78	83%
Delta Airlines	238	396	0	3	637	33	95%
Grixona	1	1	0	0	2	2	0%
JetBlue Airlines	86	192	0	2	280	60	79%
Omni Air	1	1	0	0	2	0	100%
Other – General Aviation	288	512	2	18	820	105	87%
Skyhigh Dominicana	5	11	0	0	16	2	88%
Southwest Airlines	400	747	0	16	1,163	115	90%
Sun Country Airlines	9	23	0	0	32	1	97%
United Airlines	209	366	0	10	585	70	88%
Total Air Carriers	1,854	3,401	2	61	5,318	604	89%
Cargo Carriers							
FedEx	16	48	0	0	64	5	92%
UPS	14	71	0	1	86	7	92%
Total Cargo Carriers	30	119	0	1	150	12	92%
Total	1,884	3,520	2	62	5,468	616	89%

Source: RIAC, Aircraft Operations Monitoring System, 2023

¹ Specific information regarding the deviations from the approved noise abatement departures corridors can be found in Appendix 1&2

A. Pilots will turn toward their assigned departure corridor when deemed safe and practicable



Tables 4 through 7 shows compliance by runway end. The airlines and cargo operators achieve a high level of compliance with the noise abatement procedures.

Table 4: Noise Abatement Departure Corridor Compliance for Runway 5, by Airline, 3rd Quarter 2023

Airline	Northbound Departures			Southbound Departures			Total Corridor Compliance
	Total Departures	# of Deviations	% of Compliance	Total Departures	# of Deviations	% of Compliance	
Air Carriers							
Allegiant Airlines	13	2	85%	7	0	100%	90%
American Airlines	237	13	95%	205	15	93%	94%
Axis Airways	1	0	100%	0	0	N/A	100%
Breeze Airways	50	3	94%	104	8	92%	93%
Delta Airlines	226	7	97%	12	1	92%	97%
Grixona Air	1	1	0%	0	0	N/A	0%
JetBlue Airlines	18	1	94%	68	3	96%	95%
Other – General Aviation	210	22	90%	78	11	86%	89%
Omni Air	0	0	N/A	1	0	100%	100%
Skyhigh Dominicana	0	0	N/A	5	0	100%	100%
Southwest Airlines	254	9	96%	146	11	92%	95%
Sun Country	8	0	100%	1	0	100%	100%
United Airlines	204	22	89%	5	1	80%	89%
Total Air Carriers	1,222	80	93%	632	50	92%	93%
Cargo Carriers							
Federal Express	16	1	94%	0	0	N/A	94%
UPS	13	1	92%	1	0	100%	93%
Total Cargo Carriers	29	2	93%	1	0	100%	93%
Total	1,251	82	93%	633	50	92%	93%

Source: RIAC, Aircraft Operations Monitoring System, 2023



Table 5: Noise Abatement Departure Corridor Compliance for Runway 23, by Airline, 3rd Quarter 2023

Airline	Northbound Departures			Southbound Departures			Total Corridor Compliance
	Total Departures	# of Deviations	% of Compliance	Total Departures	# of Deviations	% of Compliance	
Air Carriers							
Allegiant Airlines	33	4	88%	17	4	76%	84%
American Airlines	419	45	89%	379	52	86%	88%
Atlas Air	1	1	0%	0	0	N/A	0%
Breeze Airways	117	16	86%	186	50	73%	78%
Delta Airlines	377	23	94%	19	2	89%	94%
Grixon Air	1	1	0%	0	0	N/A	0%
JetBlue Airlines	44	9	80%	148	46	69%	71%
Other – General Aviation	357	35	90%	155	34	78%	87%
Omni Air	1	0	100%	0	0	N/A	100%
Skyhigh Dominicana	0	0	N/A	11	2	82%	82%
Southwest Airlines	426	41	90%	321	53	83%	87%
Sun Country	19	1	95%	4	0	100%	96%
United Airlines	349	45	87%	17	1	94%	87%
Total Air Carriers	2,144	221	90%	1,257	244	81%	86%
Cargo Carriers							
Federal Express	48	4	92%	0	0	N/A	92%
UPS	70	6	91%	1	0	100%	92%
Total Cargo Carriers	118	10	92%	1	0	100%	92%
Total	2,262	231	90%	1,258	244	81%	87%

Source: RIAC, Aircraft Operations Monitoring System, 2023



Table 6: Noise Abatement Departure Corridor Compliance for Runway 34, by Airline, 3rd Quarter 2023

Airline	Northbound Departures			Southbound Departures			Total Corridor Compliance
	Total Departures	# of Deviations	% of Compliance	Total Departures	# of Deviations	% of Compliance	
Air Carriers							
American Airlines	3	0	100%	7	2	71%	80%
Breeze Airways	0	0	N/A	2	1	50%	50%
Delta Airlines	3	0	100%	0	0	N/A	100%
JetBlue	1	0	100%	1	1	0%	50%
Other – General Aviation	9	1	89%	9	2	78%	83%
Southwest Airlines	8	0	100%	8	1	88%	94%
United Airlines	10	1	90%	0	0	N/A	90%
Total Air Carriers	34	2	94%	27	7	74%	85%
Cargo Carriers							
FedEx	0	0	N/A	0	0	N/A	N/A
UPS	1	0	100%	0	0	N/A	100%
Total Cargo Carriers	1	0	100%	0	0	N/A	100%
Total	35	2	94%	27	7	74%	85%

Source: RIAC, Aircraft Operations Monitoring9 System, 2023



Table 7: Noise Abatement Departure Corridor Compliance for Runway 16, by Airline, 3rd Quarter 2023

Airline	Northbound Departures			Southbound Departures			Total Corridor Compliance
	Total Departures	# of Deviations	% of Compliance	Total Departures	# of Deviations	% of Compliance	
Air Carriers							
Other (General Aviation)	0	0	N/A	2	0	100%	100%
Total Air Carriers	0	0	N/A	2	0	100%	100%
Cargo Carriers							
FedEx	0	0	N/A	0	0	N/A	N/A
UPS	0	0	N/A	0	0	N/A	N/A
Total Cargo Carriers	0	0	N/A	0	0	N/A	N/A
Total	0	0	N/A	2	0	100%	100%

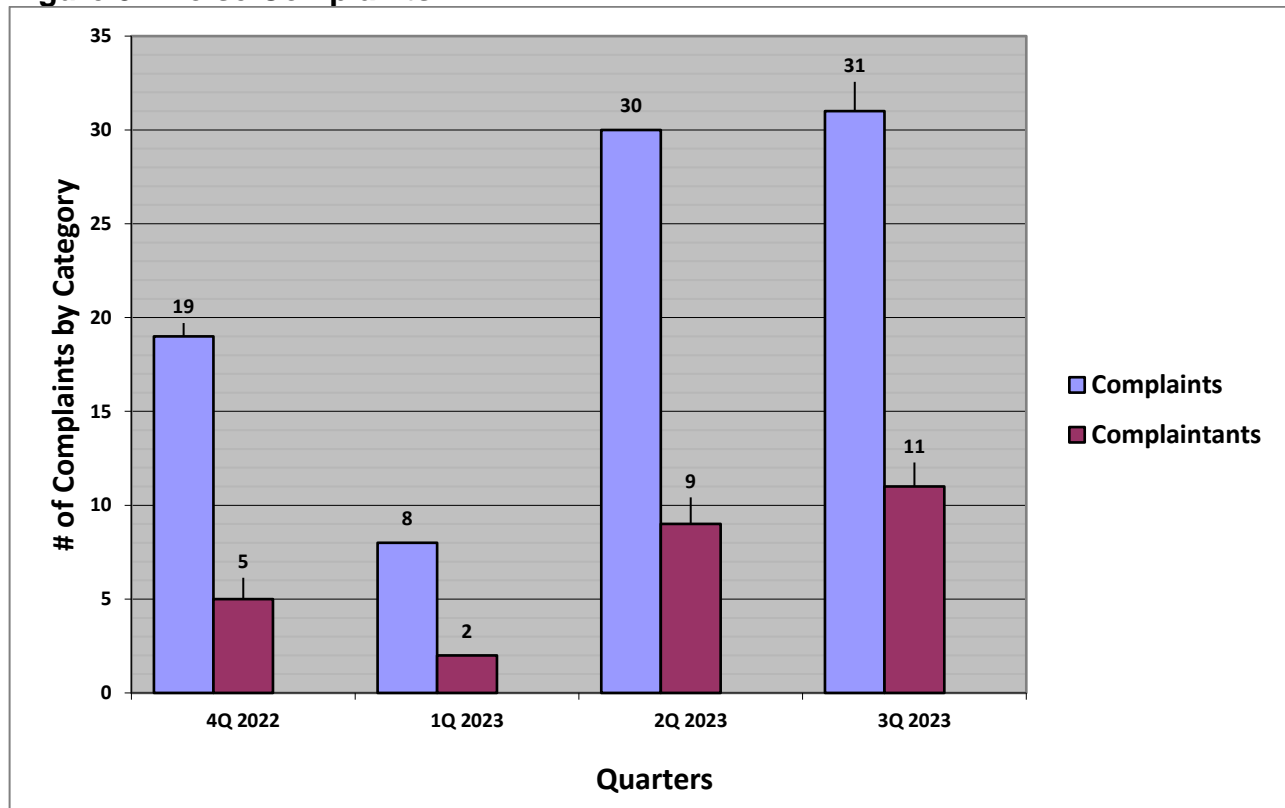
Source: RIAC, Aircraft Operations Monitoring System, 2023



Noise Complaints

RIAC has instituted several methods for citizens concerned about aircraft noise to voice their opinions. RIAC is committed to minimizing the effects of aircraft generated noise on the Warwick and Cranston Communities through the use of operational procedures and noise mitigation programs. Citizens can call the noise hotline and leave a message or submit a complaint via the web page.

Figure 9: Noise Complaints



Source: RIAC Noise Hotline & Website/Email Portal 2022 - 2023

As seen in Figure 9, during the Third Quarter 2023, RIAC received 31 complaints from 11 citizens.



APPENDIX A:

Air Carriers

Allegiant Airlines			Deviations	10
Date:	Time	RWY	Flight ID	ACType
7/2/2023	8:32 PM	23	AAY406	A319
7/14/2023	12:39 AM	23	AAY2029	A320
7/15/2023	6:35 PM	23	AAY878	A320
7/16/2023	8:18 PM	23	AAY2029	A320
7/23/2023	7:52 PM	23	AAY2029	A320
8/3/2023	7:01 PM	23	AAY884	A320
9/7/2023	11:40 AM	23	AAY955	A320
9/17/2023	9:34 PM	23	AAY336	A320
9/24/2023	11:12 AM	5	AAY954	A320
9/24/2023	7:21 PM	5	AAY336	A320

American Airlines			Deviations	127
Date:	Time	RWY	Flight ID	ACType
7/8/2023	6:16 PM	23	ENY3365	E170
7/7/2023	9:34 PM	23	ENY3715	E170
7/20/2023	6:24 PM	23	ENY3715	E170
7/27/2023	9:02 PM	23	ENY3715	E170
8/10/2023	6:05 PM	23	ENY3715	E170
8/16/2023	5:46 PM	23	ENY3715	E170
9/8/2023	8:15 PM	23	ENY3715	E170
9/3/2023	4:10 PM	23	PDT5787	E145
8/17/2023	12:36 PM	5	PDT5805	E145
8/19/2023	12:38 PM	23	PDT5805	E145
9/4/2023	12:39 PM	23	PDT5805	E145
8/15/2023	6:25 AM	5	PDT5821	E145
8/30/2023	6:20 AM	5	PDT5821	E145
7/10/2023	3:27 PM	23	PDT6017	E145
7/11/2023	3:33 PM	23	PDT6017	E145
7/16/2023	5:26 PM	23	PDT6017	E145



Rhode Island

Airport Corporation

Quarterly Operations Report 3rd Quarter 2023

American Airlines			Deviations	127
Date:	Time	RWY	Flight ID	ACType
7/17/2023	3:30 PM	23	PDT6017	E145
7/20/2023	4:54 PM	23	PDT6017	E145
7/25/2023	4:11 PM	23	PDT6017	E145
8/1/2023	3:30 PM	23	PDT6017	E145
7/7/2023	12:35 PM	23	PDT6035	E145
7/15/2023	12:36 PM	23	PDT6035	E145
7/28/2023	1:02 PM	23	PDT6035	E145
7/5/2023	6:05 AM	23	PDT6051	E145
7/17/2023	6:02 AM	23	PDT6051	E145
7/29/2023	6:10 AM	23	PDT6051	E145
7/10/2023	11:52 AM	5	PDT6035	E145
7/10/2023	6:07 AM	23	JIA5202	CRJ9
7/17/2023	6:12 AM	23	JIA5202	CRJ9
7/23/2023	6:00 AM	23	JIA5202	CRJ9
7/28/2023	6:06 AM	23	JIA5202	CRJ9
8/13/2023	6:37 AM	23	JIA5202	CRJ9
8/22/2023	6:02 AM	5	JIA5202	CRJ9
8/26/2023	9:19 AM	23	JIA5202	CRJ9
9/8/2023	1:27 PM	23	JIA5280	CRJ9
9/11/2023	1:24 PM	5	JIA5280	CRJ9
9/18/2023	1:23 PM	23	JIA5280	CRJ9
7/1/2023	12:33 PM	23	JIA5363	CRJ7
7/12/2023	1:01 PM	23	JIA5363	CRJ7
7/19/2023	1:49 PM	23	JIA5363	CRJ7
7/22/2023	12:19 PM	23	JIA5363	CRJ7
8/5/2023	12:30 PM	23	JIA5363	CRJ7
8/21/2023	12:22 PM	23	JIA5363	CRJ7
8/24/2023	12:21 PM	23	JIA5363	CRJ7
9/7/2023	12:22 PM	23	JIA5363	CRJ7
9/15/2023	12:25 PM	5	JIA5363	CRJ7
9/18/2023	12:33 PM	23	JIA5363	CRJ7
9/19/2023	12:27 PM	23	JIA5363	CRJ7
9/24/2023	12:23 PM	5	JIA5363	CRJ7
7/5/2023	7:48 PM	23	JIA5459	CRJ7
7/10/2023	10:12 PM	23	JIA5459	CRJ9



Rhode Island

Airport Corporation

Quarterly Operations Report
3rd Quarter 2023

American Airlines			Deviations	127
Date:	Time	RWY	Flight ID	ACType
8/30/2023	7:58 PM	23	JIA5459	CRJ9
9/4/2023	8:32 PM	23	JIA5459	CRJ7
7/5/2023	9:00 AM	23	JIA5468	CRJ7
7/11/2023	10:47 AM	23	JIA5468	CRJ7
7/12/2023	8:59 AM	23	JIA5468	CRJ7
7/13/2023	9:01 AM	23	JIA5468	CRJ7
7/22/2023	9:00 AM	23	JIA5468	CRJ7
7/26/2023	8:58 AM	23	JIA5468	CRJ7
7/31/2023	9:03 AM	23	JIA5468	CRJ7
7/2/2023	2:43 PM	23	JIA5619	CRJ7
7/3/2023	2:32 PM	23	JIA5619	CRJ7
7/23/2023	2:09 PM	23	JIA5619	CRJ7
7/24/2023	3:57 PM	23	JIA5619	CRJ7
8/16/2023	2:22 PM	5	JIA5619	CRJ7
8/17/2023	2:25 PM	23	JIA5619	CRJ7
8/18/2023	3:00 PM	23	JIA5619	CRJ7
8/28/2023	2:25 PM	5	JIA5619	CRJ7
8/31/2023	2:17 PM	5	JIA5619	CRJ7
9/15/2023	2:13 PM	5	JIA5635	CRJ7
9/19/2023	2:03 PM	34	JIA5635	CRJ7
9/20/2023	8:53 AM	23	JIA5647	CRJ7
8/10/2023	3:51 PM	23	JIA9969	CRJ7
9/9/2023	1:33 PM	23	RPA4395	E75L
9/6/2023	8:01 PM	23	RPA4419	E75S
9/9/2023	12:37 PM	23	RPA4419	E75S
9/11/2023	8:11 PM	5	RPA4419	E75S
9/12/2023	8:06 PM	23	RPA4419	E75S
9/22/2023	8:14 PM	5	RPA4419	E75L
9/30/2023	12:32 PM	5	RPA4419	E75S
9/25/2023	6:06 AM	5	RPA4452	E75S
9/27/2023	6:09 AM	5	RPA4452	E75S
9/11/2023	4:45 PM	23	RPA4680	E75L
9/16/2023	4:09 PM	34	RPA4680	E75S
9/17/2023	4:35 PM	23	RPA4680	E75S
9/18/2023	4:11 PM	23	RPA4680	E75S



Rhode Island

Airport Corporation

Quarterly Operations Report 3rd Quarter 2023

American Airlines			Deviations	127
Date:	Time	RWY	Flight ID	ACType
9/22/2023	4:07 PM	5	RPA4680	E75L
9/27/2023	4:10 PM	5	RPA4680	E75S
9/28/2023	4:19 PM	5	RPA4680	E75S
9/25/2023	6:15 AM	5	RPA4697	E75L
7/1/2023	3:49 PM	23	AAL1877	A321
7/1/2023	6:24 PM	23	AAL2276	B738
7/4/2023	5:06 PM	23	AAL1877	A321
7/7/2023	7:10 PM	23	AAL1450	A319
7/11/2023	5:39 PM	5	AAL2276	B738
7/12/2023	5:41 PM	23	AAL2276	B738
7/14/2023	9:26 PM	23	AAL1877	A21N
7/16/2023	6:38 AM	23	AAL1703	A321
7/18/2023	5:07 PM	23	AAL1450	A319
7/19/2023	3:20 PM	23	AAL1877	A321
7/21/2023	5:45 PM	23	AAL2276	B738
7/23/2023	3:22 PM	23	AAL1877	A321
7/28/2023	7:17 PM	23	AAL2276	B738
7/29/2023	1:27 AM	23	AAL1450	A320
7/31/2023	1:23 AM	23	AAL450Q	A319
8/1/2023	5:41 PM	23	AAL2276	B738
8/3/2023	6:23 AM	23	AAL1703	A21N
8/3/2023	5:54 PM	23	AAL2276	B738
8/5/2023	5:26 PM	23	AAL1450	A319
8/7/2023	7:01 AM	23	AAL1703	A321
8/8/2023	7:22 AM	23	AAL360	B738
8/10/2023	6:26 AM	23	AAL1703	A321
8/10/2023	7:30 AM	23	AAL360	B738
8/18/2023	3:26 PM	23	AAL1877	A321
8/22/2023	6:16 AM	5	AAL1703	A321
8/26/2023	6:19 AM	23	AAL1703	A321
8/28/2023	5:23 PM	23	AAL2276	A320
9/2/2023	3:39 PM	23	AAL360	A319
9/9/2023	4:17 PM	23	AAL2988	A320
9/10/2023	10:52 PM	23	AAL9746	A321
9/13/2023	4:45 PM	23	AAL1877	A321



Rhode Island Airport Corporation

Quarterly Operations Report
3rd Quarter 2023

American Airlines			Deviations	127
Date:	Time	RWY	Flight ID	ACType
9/15/2023	6:05 PM	5	AAL1693	A319
9/17/2023	10:13 AM	23	AAL2988	A321
9/24/2023	6:08 PM	5	AAL1693	A319
9/24/2023	9:59 PM	5	AAL9830	B772
9/25/2023	5:44 PM	5	AAL2276	A321
9/27/2023	6:00 PM	5	AAL1693	A319

Atlas Air			Deviations	1
Date:	Time	RWY	Flight ID	ACType
9/18/2023	1:57 AM	23	GTI8087	B744

Breeze Airlines			Deviations	78
Date:	Time	RWY	Flight ID	ACType
7/1/2023	7:33 PM	23	MXY221	E195
7/2/2023	7:32 AM	23	MXY720	BCS3
7/2/2023	3:11 PM	23	MXY722	BCS3
7/3/2023	7:03 AM	23	MXY708	BCS3
7/3/2023	6:44 PM	5	MXY331	E195
7/8/2023	7:07 PM	23	MXY221	E195
7/9/2023	5:37 PM	23	MXY329	E195
7/10/2023	7:36 PM	23	MXY331	E195
7/11/2023	11:06 AM	23	MXY221	E195
7/14/2023	8:31 AM	23	MXY716	BCS3
7/14/2023	6:43 PM	23	MXY331	E195
7/17/2023	8:11 AM	23	MXY716	BCS3
7/17/2023	4:54 PM	23	MXY718	BCS3
7/17/2023	7:20 PM	23	MXY331	E195
7/18/2023	7:56 AM	23	MXY716	BCS3
7/18/2023	11:26 AM	23	MXY221	E195
7/20/2023	3:17 PM	23	MXY722	BCS3
7/20/2023	5:21 PM	23	MXY451	E190
7/22/2023	8:20 AM	23	MXY716	BCS3



Rhode Island

Airport Corporation

Quarterly Operations Report 3rd Quarter 2023

Breeze Airlines		Deviations			78
Date:	Time	RWY	Flight ID	ACType	
7/22/2023	9:17 AM	23	MXY8331	E195	
7/22/2023	6:46 PM	23	MXY221	E195	
7/23/2023	8:17 AM	23	MXY702	BCS3	
7/23/2023	1:19 PM	23	MXY329	E195	
7/23/2023	6:53 PM	23	MXY451	E190	
7/24/2023	7:09 AM	23	MXY708	BCS3	
7/25/2023	7:55 AM	23	MXY716	BCS3	
7/26/2023	8:14 AM	23	MXY716	BCS3	
7/26/2023	6:53 PM	23	MXY221	E195	
7/28/2023	7:06 AM	23	MXY704	BCS3	
7/28/2023	7:01 PM	23	MXY331	E195	
7/30/2023	7:34 AM	5	MXY702	BCS3	
7/31/2023	7:06 AM	23	MXY708	BCS3	
7/31/2023	10:32 AM	23	MXY716	BCS3	
8/1/2023	11:46 AM	5	MXY221	E195	
8/2/2023	5:16 PM	23	MXY333	E195	
8/4/2023	8:59 PM	23	MXY331	E190	
8/5/2023	8:17 AM	23	MXY716	BCS3	
8/5/2023	6:53 PM	23	MXY221	E195	
8/6/2023	5:02 PM	23	MXY451	E190	
8/7/2023	7:05 AM	23	MXY708	BCS3	
8/7/2023	3:52 PM	23	MXY718	BCS3	
8/7/2023	7:46 PM	23	MXY331	E195	
8/9/2023	1:39 PM	34	MXY417	E190	
8/10/2023	1:02 PM	23	MXY329	E195	
8/11/2023	6:50 PM	23	MXY331	E195	
8/13/2023	1:48 PM	23	MXY329	E195	
8/14/2023	8:07 AM	23	MXY716	BCS3	
8/17/2023	4:48 PM	23	MXY451	E190	
8/19/2023	2:49 PM	23	MXY451	E190	
8/19/2023	6:36 PM	23	MXY221	E195	
8/20/2023	1:24 PM	23	MXY329	E195	
8/20/2023	4:59 PM	23	MXY451	E190	
8/22/2023	3:27 PM	5	MXY722	BCS3	
8/23/2023	3:22 PM	23	MXY718	BCS3	



Rhode Island

Airport Corporation

Quarterly Operations Report 3rd Quarter 2023

Breeze Airlines			Deviations	78
Date:	Time	RWY	Flight ID	ACType
8/24/2023	1:15 PM	23	MXY329	E195
8/24/2023	7:11 PM	23	MXY211	E195
8/27/2023	4:54 PM	5	MXY451	E190
8/28/2023	7:07 AM	5	MXY704	BCS3
8/28/2023	6:44 PM	23	MXY331	E195
9/1/2023	6:55 PM	23	MXY331	E195
9/2/2023	1:57 PM	23	MXY451	E190
9/3/2023	7:09 AM	23	MXY710	BCS3
9/4/2023	3:39 PM	23	MXY718	BCS3
9/4/2023	6:34 PM	23	MXY331	E195
9/7/2023	11:56 AM	23	MXY221	E195
9/8/2023	10:01 AM	23	MXY221	E195
9/8/2023	10:38 AM	23	MXY6467	BCS3
9/11/2023	2:26 PM	23	MXY307	E195
9/11/2023	4:21 PM	23	MXY704	E195
9/11/2023	5:08 PM	23	MXY718	BCS3
9/13/2023	3:12 PM	23	MXY718	BCS3
9/17/2023	12:05 PM	23	MXY221	E195
9/18/2023	5:18 PM	23	MXY333	E195
9/22/2023	2:26 PM	5	MXY307	E195
9/25/2023	7:31 AM	5	MXY712	BCS3
9/27/2023	3:42 PM	5	MXY718	BCS3
9/29/2023	3:34 PM	5	MXY718	BCS3
9/30/2023	7:05 AM	5	MXY716	BCS3

Delta Airlines			Deviations	33
Date:	Time	RWY	Flight ID	ACType
7/16/2023	11:16 AM	23	EDV4935	CRJ9
7/4/2023	7:09 AM	5	EDV4978	CRJ9
8/24/2023	5:29 AM	23	EDV4978	CRJ9
9/21/2023	5:54 PM	5	EDV4997	CRJ9
9/24/2023	6:59 PM	5	EDV4997	CRJ9
8/12/2023	5:26 PM	23	EDV5279	CRJ9



Rhode Island Airport Corporation

Quarterly Operations Report 3rd Quarter 2023

Delta Airlines			Deviations	33
Date:	Time	RWY	Flight ID	ACType
8/3/2023	3:17 PM	23	EDV5339	CRJ9
8/25/2023	3:45 PM	23	EDV5339	CRJ9
9/9/2023	10:03 AM	23	EDV5382	CRJ9
9/8/2023	7:27 PM	23	EDV5396	CRJ9
7/4/2023	3:11 PM	5	DAL1418	A320
7/6/2023	6:23 AM	23	DAL2972	A321
7/7/2023	6:08 AM	23	DAL2972	A321
7/9/2023	2:39 PM	23	DAL1418	A320
7/12/2023	5:37 AM	5	DAL2845	B712
7/13/2023	5:41 AM	23	DAL2845	B712
7/15/2023	5:41 PM	23	DAL1302	B712
7/17/2023	7:39 PM	23	DAL1793	A320
7/18/2023	3:24 PM	23	DAL1418	A320
7/27/2023	8:09 PM	23	DAL1302	B712
8/1/2023	7:04 PM	5	DAL1793	A320
8/3/2023	6:24 AM	23	DAL2018	A319
8/8/2023	5:31 PM	23	DAL1302	B712
8/13/2023	5:48 AM	23	DAL2845	A319
8/18/2023	7:00 PM	23	DAL1793	A320
8/21/2023	2:01 PM	23	DAL1418	A320
8/25/2023	2:02 PM	23	DAL1418	A320
8/25/2023	5:27 PM	23	DAL1302	B712
8/27/2023	9:58 PM	5	DAL1793	A320
9/9/2023	4:37 PM	23	DAL2659	A320
9/11/2023	7:50 PM	5	DAL2659	A320
9/20/2023	5:52 AM	23	DAL2578	B712
9/20/2023	6:26 AM	23	DAL2673	A321

Grixona Air			Deviations	1
Date:	Time	RWY	Flight ID	ACType
9/3/2023	4:44 AM	23	GXA106	A319



Rhode Island

Airport Corporation

Quarterly Operations Report 3rd Quarter 2023

JetBlue Airways			Deviations	60
Date:	Time	RWY	Flight ID	ACType
7/1/2023	4:16 PM	23	JBU1287	A320
7/2/2023	2:07 PM	23	JBU2275	A320
7/3/2023	5:21 PM	5	JBU1197	A321
7/5/2023	6:11 AM	23	JBU1075	A320
7/6/2023	4:09 PM	23	JBU1287	A320
7/8/2023	5:05 PM	23	JBU1197	A321
7/10/2023	4:08 PM	23	JBU1287	A320
7/10/2023	6:19 PM	23	JBU1197	A321
7/11/2023	6:32 PM	23	JBU2275	A320
7/12/2023	5:16 PM	23	JBU1197	A321
7/13/2023	4:58 PM	23	JBU1287	A320
7/16/2023	2:27 PM	23	JBU2275	A320
7/20/2023	3:50 PM	23	JBU1287	A320
7/21/2023	4:13 PM	23	JBU1287	A320
7/21/2023	7:41 PM	23	JBU2275	A320
7/22/2023	12:24 AM	23	JBU1197	A321
7/22/2023	4:09 PM	23	JBU1287	A320
7/22/2023	5:22 PM	23	JBU1197	A321
7/24/2023	7:13 PM	23	JBU2275	A320
7/25/2023	5:26 PM	23	JBU1197	A321
7/27/2023	4:14 PM	23	JBU1287	A320
7/27/2023	5:27 PM	23	JBU1197	A321
7/28/2023	6:43 PM	23	JBU1197	A321
7/29/2023	3:46 PM	23	JBU1287	A320
7/29/2023	5:12 PM	23	JBU1197	A321
7/31/2023	8:34 PM	23	JBU1287	A320
8/1/2023	4:06 PM	23	JBU1287	A320
8/1/2023	5:08 PM	23	JBU1197	A321
8/2/2023	6:02 PM	23	JBU1287	A320
8/5/2023	1:41 PM	23	JBU2275	A320
8/5/2023	7:55 PM	23	JBU1197	A321
8/6/2023	5:15 PM	23	JBU1197	A21N
8/9/2023	6:14 PM	23	JBU1287	A320
8/10/2023	11:44 PM	23	JBU2275	A320
8/12/2023	1:30 PM	23	JBU2275	A320



Rhode Island

Airport Corporation

Quarterly Operations Report
3rd Quarter 2023

JetBlue Airways			Deviations	60
Date:	Time	RWY	Flight ID	ACType
8/12/2023	4:01 PM	23	JBU1287	A320
8/13/2023	11:21 PM	23	JBU8097	A321
8/17/2023	4:38 PM	23	JBU1287	A320
8/17/2023	5:40 PM	23	JBU1197	A321
8/18/2023	7:45 PM	23	JBU2275	A320
8/20/2023	4:22 PM	23	JBU1287	A320
8/20/2023	5:28 PM	23	JBU1197	A321
8/21/2023	6:15 PM	5	JBU1287	A320
8/23/2023	6:07 PM	23	JBU2275	A320
9/2/2023	3:18 AM	23	JBU2275	A320
9/2/2023	1:30 PM	23	JBU2275	A320
9/2/2023	5:35 PM	23	JBU1197	A321
9/3/2023	3:55 PM	23	JBU1287	A320
9/4/2023	5:05 PM	23	JBU1197	A321
9/6/2023	2:10 PM	23	JBU1075	A320
9/8/2023	4:42 PM	23	JBU1287	A320
9/8/2023	10:54 PM	23	JBU1075	A320
9/9/2023	3:21 PM	23	JBU1075	A320
9/11/2023	5:29 PM	23	JBU1197	A320
9/13/2023	1:27 PM	23	JBU1075	A320
9/16/2023	12:49 PM	23	JBU1075	A320
9/16/2023	3:43 PM	5	JBU1287	A320
9/16/2023	6:17 PM	34	JBU1197	A320
9/18/2023	4:20 PM	23	JBU1287	A320
9/28/2023	4:02 PM	5	JBU1287	A320

Other – General Aviation			Deviations	106
Date:	Time	RWY	Flight ID	ACType
8/21/2023	5:27 PM	5	CGLXC	FA7X
8/1/2023	3:52 PM	23	CNS5625	PC24
7/16/2023	5:16 PM	23	DPJ497	BE40
7/29/2023	9:03 PM	34	DPJ495	BE40



Rhode Island

Airport Corporation

Quarterly Operations Report
3rd Quarter 2023

Other – General Aviation			Deviations	106
Date:	Time	RWY	Flight ID	ACType
9/5/2023	6:01 AM	5	DPJ496	BE40
9/9/2023	10:36 AM	23	DPJ676	BE40
9/24/2023	7:35 AM	5	DPJ325	C56X
7/24/2023	1:23 AM	23	EAL703	B763
7/31/2023	6:05 AM	23	EDG501	GL5T
9/4/2023	2:56 PM	23	EDG132	GLF4
7/2/2023	2:44 PM	23	EJA314	E55P
7/7/2023	4:58 PM	23	EJA322	E55P
7/9/2023	3:40 PM	23	EJA902	C68A
7/19/2023	7:46 PM	23	EJA551	C68A
7/22/2023	3:05 PM	23	EJA458	E55P
7/24/2023	9:07 AM	23	EJA801	C700
7/28/2023	2:19 PM	23	EJA540	C68A
8/9/2023	10:38 AM	34	EJA681	C68A
8/9/2023	4:44 PM	34	EJA392	E55P
8/9/2023	8:03 PM	23	EJA398	E55P
9/1/2023	11:54 AM	5	EJA540	C68A
9/2/2023	6:07 PM	23	EJA378	C680
9/3/2023	1:55 PM	23	EJA634	C56X
9/8/2023	10:56 AM	23	EJA927	C68A
9/15/2023	10:35 AM	5	EJA591	C68A
9/15/2023	4:02 PM	5	EJA300	E55P
9/26/2023	2:58 PM	5	EJA553	C68A
9/27/2023	8:28 AM	5	EJA590	C56X
9/28/2023	9:39 AM	5	EJA614	C56X
8/24/2023	8:54 PM	23	EJM108	GLF5
8/24/2023	9:09 PM	23	EJM108	GLF5
7/28/2023	8:14 PM	23	FTH909	C750
8/30/2023	12:58 PM	23	GLT777	C56X
9/22/2023	9:09 AM	5	HER119	C750
8/6/2023	5:38 PM	23	HPJ350	CL35
7/7/2023	10:05 AM	23	JRE821	C56X
9/19/2023	11:02 AM	23	JRE942	C680
7/3/2023	11:39 AM	23	KOW910	C750



Rhode Island

Airport Corporation

Quarterly Operations Report 3rd Quarter 2023

Other – General Aviation			Deviations	106
Date:	Time	RWY	Flight ID	ACType
8/11/2023	6:33 PM	23	KPO48	GLEX
9/24/2023	12:17 PM	5	KPO44	GLEX
8/13/2023	6:25 PM	23	LAK603	C56X
8/10/2023	11:15 AM	23	LN637AT	C550
7/9/2023	10:18 AM	23	LXJ434	E545
7/19/2023	4:35 PM	23	LXJ501	CL35
8/5/2023	9:29 AM	23	LXJ381	E55P
8/19/2023	11:26 AM	23	LXJ589	CL35
8/22/2023	11:38 AM	5	LXJ508	CL35
8/26/2023	10:56 AM	23	LXJ476	E545
9/21/2023	9:02 PM	5	MMD500	FA8X
8/23/2023	3:44 PM	23	MMN261	H25B
8/27/2023	3:32 PM	5	MVLCC	C25A
8/21/2023	1:05 PM	23	N108LT	CL35
7/22/2023	8:42 AM	23	N139DZ	L39
7/2/2023	9:57 AM	23	N17FA	C560
9/24/2023	5:15 PM	5	N17RM	H25B
7/16/2023	2:24 PM	23	N214TF	F2TH
8/3/2023	1:57 PM	23	N214TF	F2TH
8/3/2023	3:01 PM	23	N214TF	F2TH
8/3/2023	3:12 PM	23	N214TF	F2TH
7/2/2023	12:30 AM	23	N254CA	GLF4
7/14/2023	4:34 PM	23	N30NS	C525
9/10/2023	10:16 AM	23	N323MK	GLF4
9/21/2023	1:52 PM	5	N32GE	C25C
7/18/2023	3:08 PM	23	N39EG	C510
7/11/2023	5:35 PM	5	N41GJ	LJ35
9/8/2023	10:53 AM	23	N496X	GLEX
7/20/2023	3:17 PM	5	N515CX	C750
9/8/2023	5:45 PM	23	N510QS	GLF5
9/25/2023	11:02 AM	5	N516TX	C525
7/16/2023	2:31 PM	23	N550AJ	C550
9/1/2023	9:18 AM	5	N560PB	C56X
8/17/2023	11:27 AM	5	N580EE	C56X



Rhode Island

Airport Corporation

Quarterly Operations Report 3rd Quarter 2023

Other – General Aviation			Deviations	106
Date:	Time	RWY	Flight ID	ACType
9/27/2023	10:28 AM	5	N580EE	C56X
7/23/2023	2:21 PM	23	N624WP	C56X
8/2/2023	1:17 AM	23	N622JD	CL60
8/27/2023	2:33 PM	5	N628GB	C550
7/2/2023	3:13 PM	23	N651WE	GLF6
8/8/2023	4:00 PM	23	N652WE	GLF6
7/20/2023	2:59 PM	5	N688DB	LJ60
9/24/2023	7:04 AM	5	N6A	E55P
7/10/2023	10:24 AM	5	N71HR	G280
7/18/2023	6:13 PM	23	N715AV	CRJ2
8/10/2023	11:14 AM	23	N733H	F2TH
8/10/2023	1:54 PM	23	N733K	F2TH
7/20/2023	5:59 PM	23	N750SG	H25B
8/7/2023	4:12 PM	23	N805DB	F2TH
8/17/2023	5:26 PM	23	N815CE	G280
8/27/2023	12:10 AM	23	N858SJ	CRJ2
8/20/2023	9:53 AM	23	N868SC	GALX
8/26/2023	8:29 AM	23	N891SH	C650
9/21/2023	1:57 PM	5	N915GA	GA5C
8/1/2023	9:15 AM	5	PJC60	C56X
9/18/2023	6:01 PM	5	PJZ025	GLF5
7/8/2023	3:12 PM	23	RLI527	C25C
9/14/2023	2:58 AM	23	STY90	LJ60
7/14/2023	2:49 PM	23	TMB75	HDJT
9/10/2023	9:25 PM	5	TWY352	GLF4
8/28/2023	11:54 AM	5	UWD35	LJ60
8/16/2023	7:46 PM	23	VJT741	GLEX
9/1/2023	3:17 AM	5	VXP9532	B738
7/17/2023	10:49 AM	23	WSP21	SF50
7/22/2023	5:24 PM	23	WSP35	SF50
7/27/2023	9:19 AM	23	WSP35	SF50
7/30/2023	4:25 PM	5	WSP16	SF50
8/17/2023	6:02 AM	5	WSP35	SF50
7/9/2023	11:17 AM	23	XOJ736	C750



Rhode Island

Airport Corporation

Quarterly Operations Report
3rd Quarter 2023

Skyhigh Dominicana			Deviations	2
Date:	Time	RWY	Flight ID	ACType
7/10/2023	3:46 PM	23	SHH916	E190
7/17/2023	4:49 PM	23	SHH916	E190

Southwest Airlines			Deviations	115
Date:	Time	RWY	Flight ID	ACType
7/1/2023	5:12 AM	23	SWA4555	B737
7/1/2023	5:39 PM	23	SWA258	B738
7/1/2023	8:45 PM	23	SWA2803	B737
7/3/2023	5:22 AM	23	SWA2896	B738
7/3/2023	8:18 AM	23	SWA518	B38M
7/3/2023	6:06 PM	5	SWA2847	B737
7/3/2023	7:26 PM	5	SWA5215	B737
7/4/2023	5:19 AM	5	SWA2896	B738
7/4/2023	5:04 PM	23	SWA4061	B738
7/4/2023	8:31 PM	5	SWA3596	B737
7/5/2023	5:25 AM	23	SWA2896	B738
7/5/2023	6:23 PM	23	SWA1262	B737
7/5/2023	8:20 PM	23	SWA3596	B737
7/6/2023	11:26 AM	23	SWA8507	B737
7/6/2023	12:33 PM	23	SWA2649	B738
7/7/2023	11:02 AM	23	SWA1164	B38M
7/8/2023	5:06 AM	23	SWA4555	B737
7/8/2023	5:36 AM	23	SWA3366	B737
7/8/2023	7:20 PM	23	SWA1578	B738
7/8/2023	9:48 PM	23	SWA2803	B737
7/9/2023	11:06 AM	23	SWA1752	B737
7/9/2023	6:18 PM	23	SWA1297	B38M
7/9/2023	6:38 PM	23	SWA3216	B38M
7/10/2023	6:11 AM	23	SWA2896	B38M
7/10/2023	11:55 AM	5	SWA2648	B38M
7/11/2023	10:59 AM	23	SWA346	B737
7/11/2023	7:14 PM	23	SWA651	B738



Rhode Island

Airport Corporation

Quarterly Operations Report 3rd Quarter 2023

Southwest Airlines			Deviations	115
Date:	Time	RWY	Flight ID	ACType
7/13/2023	5:20 PM	23	SWA2263	B738
7/14/2023	1:50 PM	23	SWA1261	B737
7/15/2023	5:26 AM	23	SWA3693	B38M
7/15/2023	5:14 PM	23	SWA175	B737
7/17/2023	5:31 PM	23	SWA2263	B38M
7/17/2023	7:42 PM	23	SWA651	B738
7/18/2023	12:13 PM	23	SWA1261	B737
7/18/2023	7:20 PM	23	SWA651	B38M
7/19/2023	12:55 PM	23	SWA663	B737
7/19/2023	6:59 PM	23	SWA3430	B737
7/20/2023	5:17 PM	23	SWA477	B737
7/20/2023	7:38 PM	23	SWA651	B38M
7/21/2023	11:02 AM	23	SWA346	B737
7/21/2023	12:45 PM	23	SWA1261	B737
7/21/2023	6:22 PM	23	SWA2263	B738
7/22/2023	5:16 AM	5	SWA3693	B38M
7/23/2023	9:00 AM	23	SWA2762	B738
7/24/2023	12:10 PM	23	SWA663	B737
7/25/2023	8:30 PM	5	SWA477	B737
7/26/2023	1:47 PM	23	SWA2669	B737
7/27/2023	4:28 PM	23	SWA8663	B738
7/27/2023	7:17 PM	23	SWA3430	B737
7/27/2023	8:17 PM	23	SWA651	B38M
7/28/2023	7:04 AM	23	SWA1785	B737
7/28/2023	10:19 AM	23	SWA1057	B738
7/28/2023	8:24 PM	23	SWA651	B38M
7/28/2023	11:17 PM	23	SWA3430	B737
7/29/2023	5:12 AM	23	SWA3693	B738
7/31/2023	7:06 PM	23	SWA651	B38M
8/1/2023	5:20 PM	23	SWA2263	B738
8/3/2023	12:22 PM	23	SWA1261	B737
8/3/2023	5:31 PM	23	SWA2263	B38M
8/4/2023	12:19 PM	23	SWA663	B737
8/5/2023	5:53 AM	23	SWA3693	B38M



Rhode Island

Airport Corporation

Quarterly Operations Report 3rd Quarter 2023

Southwest Airlines			Deviations	115
Date:	Time	RWY	Flight ID	ACType
8/7/2023	7:32 AM	23	SWA3237	B38M
8/7/2023	7:22 PM	23	SWA651	B38M
8/8/2023	10:23 AM	23	SWA1057	B38M
8/8/2023	11:07 AM	23	SWA346	B737
8/10/2023	10:59 AM	23	SWA346	B737
8/11/2023	8:16 PM	23	SWA1677	B38M
8/12/2023	5:15 AM	23	SWA3693	B738
8/12/2023	5:46 AM	23	SWA1563	B738
8/13/2023	6:00 AM	23	SWA186	B738
8/14/2023	10:53 AM	23	SWA346	B737
8/14/2023	7:59 PM	23	SWA651	B38M
8/14/2023	8:17 PM	23	SWA3430	B737
8/17/2023	7:09 AM	5	SWA747	B38M
8/17/2023	7:35 PM	23	SWA3414	B38M
8/18/2023	9:15 AM	23	SWA2902	B38M
8/19/2023	5:13 AM	23	SWA5169	B38M
8/19/2023	5:57 PM	23	SWA1525	B38M
8/20/2023	10:59 AM	23	SWA4776	B38M
8/21/2023	6:05 AM	23	SWA2312	B737
8/21/2023	7:05 AM	23	SWA747	B738
8/21/2023	11:09 AM	23	SWA4776	B38M
8/24/2023	6:06 AM	23	SWA2312	B737
8/25/2023	1:26 PM	23	SWA744	B737
8/26/2023	5:13 AM	23	SWA5169	B738
8/28/2023	7:18 PM	23	SWA3414	B38M
8/30/2023	6:51 PM	23	SWA4666	B738
8/31/2023	7:03 AM	5	SWA747	B738
8/31/2023	1:31 PM	5	SWA744	B737
9/2/2023	5:08 AM	23	SWA5169	B38M
9/2/2023	11:10 AM	23	SWA2337	B38M
9/2/2023	11:30 PM	23	SWA8521	B737
9/4/2023	12:36 PM	23	SWA5296	B738
9/4/2023	1:55 PM	23	SWA744	B737
9/4/2023	6:08 PM	23	SWA380	B737



Rhode Island Airport Corporation

Quarterly Operations Report
3rd Quarter 2023

Southwest Airlines				Deviations	115
Date:	Time	RWY	Flight ID	ACType	
9/6/2023	2:15 PM	23	SWA2430	B737	
9/7/2023	10:56 AM	23	SWA2788	B38M	
9/7/2023	1:35 PM	23	SWA1551	B737	
9/8/2023	6:01 PM	23	SWA3524	B38M	
9/9/2023	12:29 PM	23	SWA3287	B737	
9/9/2023	1:24 PM	23	SWA4377	B737	
9/11/2023	1:12 PM	5	SWA4889	B737	
9/11/2023	8:20 PM	5	SWA650	B738	
9/11/2023	9:30 PM	5	SWA2314	B738	
9/13/2023	3:28 PM	23	SWA2430	B737	
9/14/2023	1:00 PM	5	SWA806	B737	
9/16/2023	6:50 AM	5	SWA2449	B738	
9/17/2023	8:00 AM	23	SWA2786	B737	
9/17/2023	2:52 PM	23	SWA2430	B738	
9/19/2023	2:09 PM	34	SWA2430	B737	
9/21/2023	3:03 PM	5	SWA2786	B737	
9/27/2023	7:23 AM	5	SWA4009	B38M	
9/28/2023	7:08 AM	5	SWA4009	B737	
9/28/2023	3:07 PM	5	SWA2786	B737	
9/30/2023	6:29 PM	5	SWA2144	B737	

Sun Country Airlines				Deviations	1
Date:	Time	RWY	Flight ID	ACType	
8/27/2023	12:20 AM	23	SCW4500	CRJ2	

United Airlines				Deviations	70
Date:	Time	RWY	Flight ID	ACType	
7/5/2023	6:39 AM	23	UAL2137	A319	
7/9/2023	7:34 PM	23	UAL681	B738	



Rhode Island Airport Corporation

Quarterly Operations Report 3rd Quarter 2023

United Airlines			Deviations	70
Date:	Time	RWY	Flight ID	ACType
7/11/2023	6:36 AM	23	UAL2137	A319
7/27/2023	6:51 AM	23	UAL2137	A319
8/11/2023	1:14 AM	23	UAL2536	B772
8/18/2023	6:41 AM	5	UAL2137	A319
8/24/2023	6:38 AM	23	UAL2137	A319
9/2/2023	6:38 AM	23	UAL2137	A319
9/5/2023	6:17 AM	5	UAL1450	A319
8/18/2023	10:35 AM	23	UCA4245	E145
8/27/2023	10:08 AM	5	UCA4245	E145
8/8/2023	2:52 PM	23	UCA4275	E145
8/25/2023	3:33 PM	23	UCA4275	E145
9/4/2023	3:32 PM	23	UCA4275	E145
9/11/2023	10:01 AM	5	UCA4280	E145
9/18/2023	12:06 PM	23	UCA4280	E145
8/3/2023	12:20 PM	23	GJS4427	CRJ7
8/30/2023	12:13 PM	23	GJS4427	CRJ7
9/3/2023	12:22 PM	23	GJS4427	CRJ7
7/23/2023	3:08 PM	23	GJS4428	CRJ7
7/24/2023	3:16 PM	23	GJS4428	CRJ7
7/26/2023	2:55 PM	23	GJS4428	CRJ7
9/28/2023	10:16 AM	5	GJS4429	CRJ7
7/23/2023	12:09 PM	23	GJS4442	CRJ7
9/17/2023	2:50 PM	23	ASH6084	E75L
9/19/2023	2:51 PM	34	ASH6084	E75L
9/27/2023	3:45 PM	5	ASH6084	E75L
9/24/2023	6:20 AM	5	RPA3404	E75L
9/27/2023	6:18 AM	5	RPA3404	E75L
9/6/2023	6:05 PM	23	RPA3460	E75L
9/14/2023	6:29 PM	5	RPA3460	E75L
9/15/2023	6:40 PM	5	RPA3460	E170
7/5/2023	7:02 AM	23	RPA3552	E75L
8/3/2023	7:13 AM	23	RPA3552	E75L
8/12/2023	7:09 AM	23	RPA3552	E75L
8/18/2023	8:18 AM	23	RPA3552	E75L
8/19/2023	6:52 AM	23	RPA3552	E75L



Rhode Island

Airport Corporation

Quarterly Operations Report 3rd Quarter 2023

United Airlines			Deviations	70
Date:	Time	RWY	Flight ID	ACType
8/21/2023	7:10 AM	23	RPA3552	E75L
9/2/2023	6:45 AM	23	RPA3552	E170
9/30/2023	6:07 PM	5	RPA3552	E75L
7/12/2023	4:28 PM	23	RPA3590	E75L
7/30/2023	3:50 PM	5	RPA3590	E75L
8/11/2023	4:34 PM	23	RPA3590	E75L
8/16/2023	4:37 PM	23	RPA3590	E75L
8/21/2023	4:25 PM	5	RPA3590	E75L
8/22/2023	4:27 PM	5	RPA3590	E75L
9/2/2023	4:34 PM	23	RPA3590	E170
9/21/2023	6:25 PM	5	RPA3605	E75L
9/23/2023	8:12 PM	5	RPA3605	E75L
9/13/2023	12:03 PM	23	RPA3623	E170
9/30/2023	12:28 PM	5	RPA3623	E75L
7/18/2023	4:57 PM	23	RPA3627	E170
8/10/2023	3:57 PM	23	RPA3627	E170
8/15/2023	3:56 PM	5	RPA3627	E75L
8/22/2023	3:52 PM	5	RPA3627	E170
8/25/2023	3:53 PM	23	RPA3627	E170
8/30/2023	3:58 PM	23	RPA3627	E170
9/8/2023	4:17 PM	23	RPA3627	E170
9/22/2023	4:23 PM	5	RPA3627	E170
9/30/2023	6:04 PM	5	RPA3632	E75L
9/17/2023	7:10 AM	23	RPA3655	E75L
9/19/2023	7:04 AM	23	RPA3655	E75L
9/20/2023	7:11 AM	23	RPA3655	E75L
9/23/2023	7:06 AM	5	RPA3655	E75L
9/24/2023	7:13 AM	5	RPA3655	E75L
7/5/2023	5:28 PM	23	RPA3306	E75L
7/14/2023	4:49 PM	23	RPA3321	E75L
7/27/2023	3:30 PM	23	RPA3318	E75L
8/14/2023	3:53 PM	23	RPA3301	E170
9/8/2023	10:24 AM	23	RPA3302	E75L



Rhode Island

Airport Corporation

Quarterly Operations Report
3rd Quarter 2023

Cargo Carriers

FedEx			Deviations	5
Date:	Time	RWY	Flight ID	ACType
7/3/2023	8:42 PM	23	FDX1254	B752
7/6/2023	8:57 PM	23	FDX1254	B752
7/21/2023	8:55 PM	23	FDX1254	B752
7/24/2023	9:01 PM	23	FDX1254	B752
9/14/2023	8:55 PM	5	FDX1254	B752

UPS			Deviations	7
Date:	Time	RWY	Flight ID	ACType
7/6/2023	10:32 PM	23	UPS1031	B752
7/11/2023	10:28 PM	23	UPS1031	B752
7/26/2023	10:21 PM	23	UPS1031	B752
8/14/2023	9:37 PM	23	UPS1299	B752
8/30/2023	10:17 PM	23	UPS1031	B752
9/21/2023	9:45 PM	23	UPS1299	B752
9/28/2023	9:35 PM	5	UPS1299	B752