

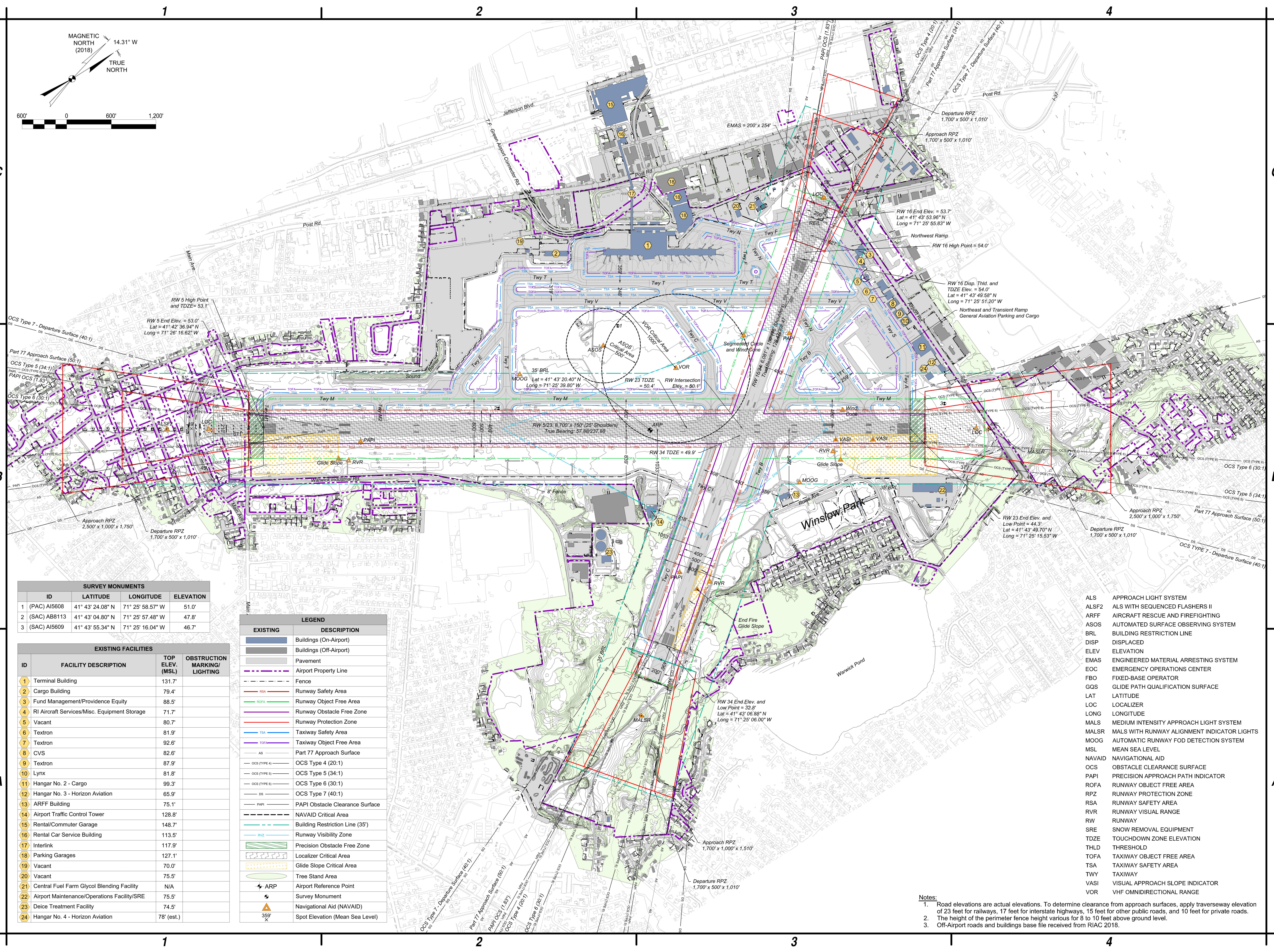


**AIRPORT LAYOUT PLAN UPDATE  
 THEODORE FRANCIS GREEN STATE AIRPORT  
 RHODE ISLAND AIRPORT CORPORATION**

Jun 17, 2021 - 2:12pm  
 P:\Project\08 - PFD Airport Master Plan Update\08-004-002 - TO AGIS and Existing ALP\Planning-Study\CADD\Sheet\_Finish\ALP3 - PFD-Existing\_Facilities.dwg

MARK	DATE	DESCRIPTION
REVISIONS		
PROJECT NO: 108.004.002		
DATE: MAY 2021		
DRAWN BY: J.J. SHURER		
DESIGNED BY: J.J. SHURER		
CHECKED BY: S. TUMOLO		

**EXISTING FACILITIES**



SURVEY MONUMENTS			
ID	LATITUDE	LONGITUDE	ELEVATION
1 (PAC) A15608	41° 43' 24.08" N	71° 25' 58.57" W	51.0'
2 (SAC) AB8113	41° 43' 04.80" N	71° 25' 57.48" W	47.8'
3 (SAC) A15609	41° 43' 55.34" N	71° 25' 16.04" W	46.7'

EXISTING FACILITIES			
ID	FACILITY DESCRIPTION	TOP ELEV. (MSL)	OBSTRUCTION MARKING/LIGHTING
1	Terminal Building	131.7'	
2	Cargo Building	79.4'	
3	Fund Management/Providence Equity	88.5'	
4	Rt Aircraft Services/Misc. Equipment Storage	71.7'	
5	Vacant	80.7'	
6	Textron	81.9'	
7	Textron	92.6'	
8	CVS	82.6'	
9	Textron	87.9'	
10	Lynx	81.8'	
11	Hangar No. 2 - Cargo	99.3'	
12	Hangar No. 3 - Horizon Aviation	65.9'	
13	ARFF Building	75.1'	
14	Airport Traffic Control Tower	128.8'	
15	Rental/Commuter Garage	148.7'	
16	Rental Car Service Building	113.5'	
17	Interlink	117.9'	
18	Parking Garages	127.1'	
19	Vacant	70.0'	
20	Vacant	75.5'	
21	Central Fuel Farm Glycol Blending Facility	N/A	
22	Airport Maintenance/Operations Facility/SRE	75.5'	
23	Deice Treatment Facility	74.5'	
24	Hangar No. 4 - Horizon Aviation	78' (est.)	

EXISTING	DESCRIPTION
[Symbol]	Buildings (On-Airport)
[Symbol]	Buildings (Off-Airport)
[Symbol]	Pavement
[Symbol]	Airport Property Line
[Symbol]	Fence
[Symbol]	Runway Safety Area
[Symbol]	Runway Object Free Area
[Symbol]	Runway Protection Zone
[Symbol]	Taxiway Safety Area
[Symbol]	Taxiway Object Free Area
[Symbol]	Part 77 Approach Surface
[Symbol]	OCS Type 4 (20:1)
[Symbol]	OCS Type 5 (34:1)
[Symbol]	OCS Type 6 (30:1)
[Symbol]	OCS Type 7 (40:1)
[Symbol]	PAPI Obstacle Clearance Surface
[Symbol]	NAVAID Critical Area
[Symbol]	Building Restriction Line (35')
[Symbol]	Runway Visibility Zone
[Symbol]	Precision Obstacle Free Zone
[Symbol]	Localizer Critical Area
[Symbol]	Glide Slope Critical Area
[Symbol]	Tree Stand Area
[Symbol]	Airport Reference Point
[Symbol]	Survey Monument
[Symbol]	Navigational Aid (NAVAID)
[Symbol]	Spot Elevation (Mean Sea Level)

ALS	APPROACH LIGHT SYSTEM
ALS2	ALS WITH SEQUENCED FLASHERS II
ARFF	AIRCRAFT RESCUE AND FIREFIGHTING
ASOS	AUTOMATED SURFACE OBSERVING SYSTEM
BRL	BUILDING RESTRICTION LINE
DISP	DISPLACED
ELEV	ELEVATION
EMAS	ENGINEERED MATERIAL ARRESTING SYSTEM
EOC	EMERGENCY OPERATIONS CENTER
FBO	FIXED-BASE OPERATOR
GQS	GLIDE PATH QUALIFICATION SURFACE
LAT	LATITUDE
LOC	LOCALIZER
LONG	LONGITUDE
MALS	MEDIUM INTENSITY APPROACH LIGHT SYSTEM
MALS2	MALS WITH RUNWAY ALIGNMENT INDICATOR LIGHTS
MOOG	AUTOMATIC RUNWAY FOD DETECTION SYSTEM
MSL	MEAN SEA LEVEL
NAVAID	NAVIGATIONAL AID
OCS	OBSTACLE CLEARANCE SURFACE
PAPI	PRECISION APPROACH PATH INDICATOR
ROFA	RUNWAY OBJECT FREE AREA
RPZ	RUNWAY PROTECTION ZONE
RSA	RUNWAY SAFETY AREA
RVR	RUNWAY VISUAL RANGE
RW	RUNWAY
SRE	SNOW REMOVAL EQUIPMENT
TDZE	TOUCHDOWN ZONE ELEVATION
THLD	THRESHOLD
TOFA	TAXIWAY OBJECT FREE AREA
TSA	TAXIWAY SAFETY AREA
TWY	TAXIWAY
VASI	VISUAL APPROACH SLOPE INDICATOR
VOR	VHF OMNIDIRECTIONAL RANGE

- Notes:**
- Road elevations are actual elevations. To determine clearance from approach surfaces, apply traverseway elevation of 23 feet for runways, 17 feet for interstate highways, 15 feet for other public roads, and 10 feet for private roads.
  - The height of the perimeter fence height varies for 8 to 10 feet above ground level.
  - Off-Airport roads and buildings base file received from RIAC 2018.